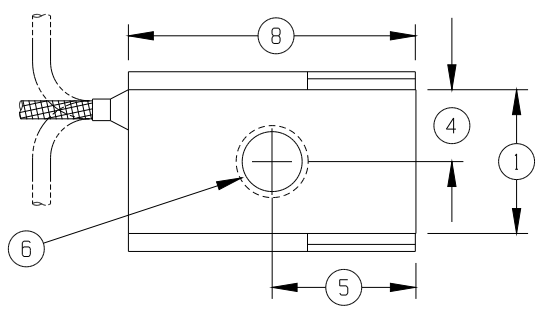
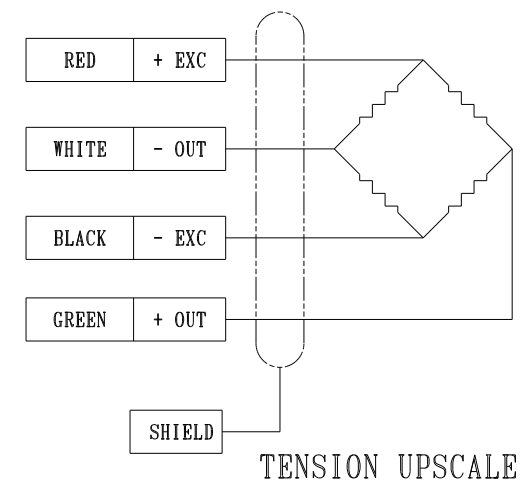
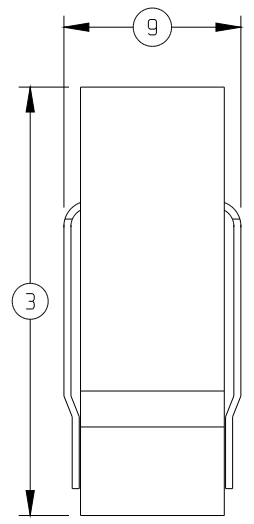
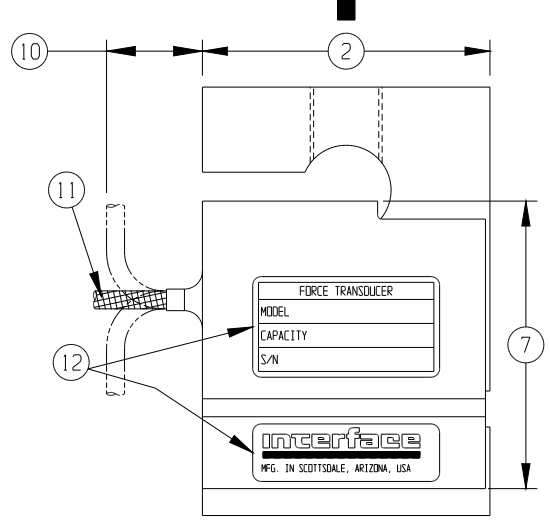


REVISIONS			
REV	DESCRIPTION	DATE	APPROVED



TENSION LOAD ↑ PRIMARY AXIS



LOAD CELL CHARACTERISTICS		U.S. CAPACITIES	SI CAPACITIES
#	CAPACITY	1000 (lbf)	5000 N
	FLEXURE MATERIAL	ANODIZED ALUMINUM	
1	FLEXURE WIDTH	1.00 (25.4)	
2	FLEXURE LENGTH	2.00 (50.8)	
3	FLEXURE HEIGHT	3.00 (76.2)	
4	FLEXURE THREADED HOLE TO EDGE TYPICAL	0.50 (12.7)	
5	FLEXURE THREADED HOLE TO EDGE TYPICAL	1.00 (25.4)	
6	FLEXURE THREAD TYPICAL	.500-20 UNF -2B	M12 x 1.75-6H
7	COVER HEIGHT	2.00 (50.8)	
8	COVER LENGTH	1.94 (49.3)	
9	OVERALL WIDTH	1.25 (31.8)	
10	BEND CLEARANCE (CABLE)	0.50 (12.7) MIN.	
11	CABLE TYPE [3]	.13 (3.3) O.D. 4 CONDUCTOR 28 GAGE SHIELDED CABLE	
12	IDENTIFICATION LABEL INCLUDING: MODEL, CAPACITY & SERIAL NUMBER		

- [3] STANDARD CABLE LENGTH IS 5 FT (1.5 M)
NON-STANDARD CABLE LENGTH PER OPTION CODE
- 2. DIMENSIONAL TOLERANCE: +/- 0.01 (mm +/- 0.3)
- 1. DIMENSIONS IN INCHES & (MM)

Interface, Inc.
7401 E. BUTHERUS DR. SCOTTSDALE, ARIZONA 85260

TITLE: OUTLINE	OWG NO.:
MODELS: SM-1000 & 5000N	80030
SIZE: A	DRAWN BY: PER
DATE: 12-29-95	REV: --
SCALE: .75:1	APPROVED BY:
SHEET 1 OF 1	

Interface Inc. claims propriety rights in the information disclosed herein. This drawing is furnished in confidence on the express understanding that neither it nor any reproduction thereof will be disclosed to others or used for the purpose of manufacture or procurement of the article or part shown hereon without written permission of Interface Inc. The drawing shall remain Interface's property and shall be returned on Interface's request.