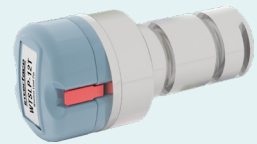




WTS 1200
Standard Precision LowProfile™
Wireless Load Cell
Capacities from 300 to 100K lbf
(1.5 to 450 kN)



WTS L P
Wireless Stainless Steel Load Pin
Capacities up to 3,000K lbf
(Up to 13.3 kN)



WTS T L
Wireless Tension Link Load Cell
Capacities from 11K lbf to 220K lbf
(5 to 100 metric tons)



WTS SHK-B Wireless Bow Type Load Shackle
Capacities from 12 to 120MT (26.5K and 265K lbf)

WTS SHK-B-HL Wireless High Capacity Load Shackle
Capacities from 120 to 1K MT (265K to 2205K lbf)

WTS SHK-B-JR Junior Wireless Load Shackle
Capacities from 3.25 to 9.5 MT (7.17K to 20.9K lbf)

WTS SHK-D Wireless D-Type Load Shackle
Capacities from 12 to 35 MT (26.5K to 77.2K lbf)



WTS-AM-1E
Wireless Strain Bridge Transmitter Module
mV/V Input



WTS-AM-1F
Wireless Strain Bridge Transmitter Module
for Fast Measurements
mV/V Input



WTS-AM-2
Wireless Voltage Sensor Transmitter
Voltage Input



WTS-WSS
Wireless Wind Speed Transmitter Module



WTS-AM-3
Wireless Transmitter Module
4-20mA Current Input



WTS-AR
Wireless Repeater Module

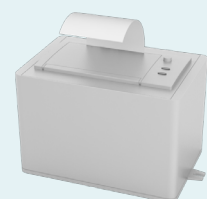
WTS transmitters have been designed for battery operation & support an ultra low-power sleep mode whilst offering class leading wireless coverage and range up to 800 meters.



WTS-BS-5/DT
Wireless Analog Output Receiver Module



WTS-RM1
Wireless Relay Output Receiver Module



WTS-PR1
Wireless Telemetry Printer



WTS-RDC
Wireless Remote Data Collector

Integrated Transmitter Models Available

WTS 1200

WTS L P

WTS T L

WTS SHK-B

WTS SHK-B-HL

WTS SHK-B-JR

WTS SHK-D

Transmitter Models Available

WTS-AM-1E

WTS-AM-1F

WTS-AM-2

WTS-AM-3

WTS-WSS

Repeater Models Available

WTS-AR

Output Models Available

WTS-BS-5/DT

WTS-RM1

WTS-RDC

WTS-PR1



WTS-BS-1
Wireless Handheld Display For Unlimited Transmitters



WTS-BS-1-HA
Wireless Handheld Display for summation of up to 12 Transmitters



WTS-BA-1-HS
Wireless Handheld Display for Single Transmitter



WTS-LD1
Wireless Large 4 Digit LED Display



IAHD-1
Advanced Wireless Handheld Display with Audible Alarm

- Simple operation
- Auto shutdown
- Rugged construction
- Range up to 800 meters



WTS-BS-4
Long Range Wireless Base Station with USB Interface in Industrial Enclosure



WTS-BS-6
Standard Range Wireless Telemetry Dongle Base Station



WTS-SO
Wireless Interface with ASCII Serial Output

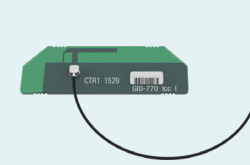


WTS-GW1
Wireless Gateway with Modbus & ASCII Serial Output

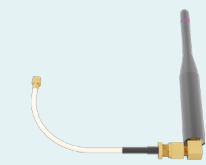


WTS-BS-3E
Standard Range Wireless Base Station with USB Interface

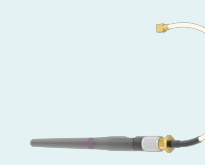
On Windows PCs the free WTS Toolkit is used to configure & calibrate the WTS modular telemetry system while the free WTS logging and visualization software allows monitoring and data collection.



WTS-ANTA
Telemetry Antenna to be fitted Inside a Plastic Enclosure



WTS-ANTB
Telemetry Whip Antenna with a Fixed 90 Degree Elbow for Mounting Externally



WTS-ANTC
Telemetry Antenna for Mounting Externally



WTS-ANTD
Telemetry Antenna for Mounting Externally & a Low Physical Profile



WTS-ANTE
Telemetry Antenna for Mounting Externally & Suitable for Tough Environments

- 5 different versions (PCB, fixed, variable, puck)
- Offers flexibility to OEM installers
- Surface & bulkhead options

Display Models Available

WTS-BS-1

WTS-BS-1-HA

WTS-BS-1-HS

IAHD-1

WTS-LD1

Base Station & Interface Models Available

WTS-GW1

WTS-BS-3E

WTS-BS-4

WTS-BS-6

WTS-SO

Antenna Models Available

WTS-ANTA

WTS-ANTB

WTS-ANTC

WTS-ANTD

WTS-ANTE

Software & Cloud Available

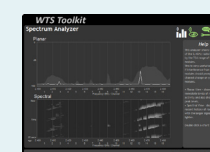
WTS Toolkit

Log 100

Interface Telemetry Cloud Platform



Log 100
Display, Logging, Graphing, & Mapping Software



WTS Toolkit
Setup & Scaling, Logging, & Graphing Software



Interface
Telemetry Cloud Platform