

Interface

Summary Catalog



Summary Catalog v2.2 04-22-2026

interface
FORCE MEASUREMENT SOLUTIONS

The World Leader in Force Measurement Solutions™



LOAD CELLS



1000 Fatigue-Rated Universal LowProfile® Load Cell Standard & High Capacities
 250 lbf to 50K lbf
 1.25 kN to 225 kN
 Fully Reversed High Cyclic Loading



1100 Ultra Precision Very High Accuracy
 300K lbf to 200K lbf
 1.33 kN to 890 kN



1101 Compression-Only Ultra Precision Very High Accuracy
 1K lbf to 50K lbf
 4.45 kN to 222 kN



1200 Stanard Precision Universal LowProfile Load Cell Standard & High Capacities
 300 lbf to 100K lbf
 1.33 kN to 450 kN



1201 Compression-Only Standard Precision
 1K lbf to 400K lbf
 4.45 kN to 1,779 kN



WTS 1200 Standard Precision LowProfile® Wireless Load Cell
 300 lbf to 2,000K lbf
 1.33 kN to 8,896 kN



1200 & 1201 3-Wire Amplified Load Cell Universal or Compression-Only
 300 lbf to 100K lbf
 2 kN to 445 kN



1200 & 1201 Series IO-Link Universal & Compression-Only
 300 lbf to 100K lbf
 2 kN to 445 kN



1208 Flange Mount Standard Precision
 30K lbf to 330K lbf
 133 kN to 1,468 kN



1331 Compression-Only
 100K lbf
 450 kN



1500 Compact Low Capacity
 25 lbf to 300 lbf
 111 N to 1.33 kN



1600 Gold Standard® Calibration
 500 lbf to 200K lbf
 2.22 kN to 900 kN
 4% lower load limit per ASTM E74



1601 Gold Standard® Calibration Compression-Only
 1K lbf to 100K lbf
 4.45 kN to 445 kN



1606 Gold Standard® Calibration Low Capacity Universal
 50 lbf to 300K lbf
 222 kN to 1,330 kN



1700 Flange Mount
 220 lbf to 14K lbf
 1 kN to 63 kN
 Mounts Directly to Cylinders



1800 Platinum Standard® Calibration
 1.1K lbf to 55K lbf
 4.89 kN to 245 kN
 Capable of 2% lower load limit per ASTM E74



2400 Standard Stainless Steel
 100 lbf to 50K lbf
 0.44 kN to 250 kN
 Environmentally Sealed
 Hermetically Sealed Available



2404 Standard Stainless Steel 2-Wire Amplified
 100 lbf to 5K lbf
 0.44 kN to 23 kN
 Internally Amplified
 with 4-20 mA Output



3200 Precision Stainless Steel
 2.5K lbf to 100K lbf
 11.1 N to 445 kN
 Hermetically Sealed



3201 Precision Stainless Steel Compression Only
 5K lbf to 100K lbf
 25 kN to 445 kN
 Hermetically Sealed



**BPL Ultra Low Height
Compression Only**
50 lbf to 500 lbf
250 N to 2,500 N
Self-Centering in all Directions
High Output 4 mV/V



**SSLP Stainless Steel
Low Profile Universal**
562 lbf to 1,124K lbf
2.5 kN to 5,000 kN



**WSSCLC Stainless Steel
Low Profile Compression
Load Cell**
220 lbf to 440.9K lbf
100 kg to 200 MT



**2000 High Precision
Canister**
50K lbf to 1M lbf
630 kN to 4450 kN



**2160 High Capacity
Column**
50K lbf to 1M lbf
630 kN to 4450 kN



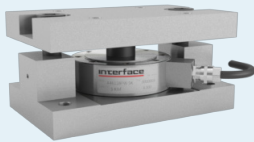
**2161 High Capacity
Compression Only
Column**
50K lbf to 1M lbf
630 kN to 4450 kN



2200 Column
50K lbf to 1M lbf
630 kN to 4450 kN



2300 Column
50K lbf to 1M lbf
630 kN to 4450 kN



**A4200/A4600
WeighCheck™**
2.5 lbf to 50K lbf
11.1 kN to 222 kN



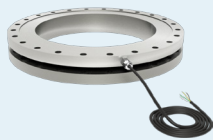
**ICPA/ICPW Stainless Steel
Compression Only**
4.4K lbf to 2,204K lbf
2 MT to 1K MT
Wireless Option Available



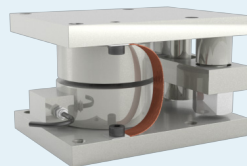
**IPCD Pressure
Compensated Downhole**
10K lbf
44.5 kN
High accuracy
Maintenance free



**ITCA Tension
& Compression**
2.2 lbf to 330.6K lbf
1 MT to 150 MT



**LWPF2 High Capacity
Press Force Load
Washer Load Cell**
22.5K lbf to 157K lbf
100 kN to 700 kN



**WSSCLC-MOUNT
Weighing Assembly**
220 lbf to 440.9K lbf
100 kg to 200 MT



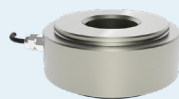
**WMC Rod End
Load Cell**
15K lbf to 200K lbf
65 kN to 900 kN



**ConvexBT Load
Button Load Cell**
5 lbf to 1K lbf
22.24 N to 4.44 N



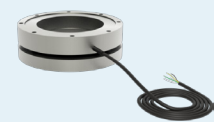
**LBM/LBMP/LBMU
Load Buttons**
2.25 lbf to 50K lbf
0.01 kN to 130 kN



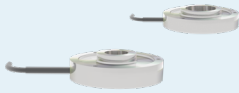
**LWCF
Clamping Force
Load Washer**
3.37 lbf to 33.7K lbf
15 kN to 1,500 kN



**LWHP14/LWHP18
Precision Load Washers**
11.2 lbf to 1,124K lbf
0.05 kN to 5,000 kN



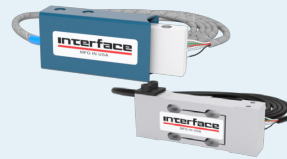
**LWPF1 Press Force
Load Washer Load Cell**
450 lbf to 22.5K lbf
2 kN to 100 kN



LWMH1/LWMH2
Load Washers with
Mounting Holes
45 lbf to 4.5K lbf
0.2 kN to 20 kN



LW Load Washer
5 lbf to 135K lbf
0.02 kN to 600 kN



MB/MBP/MBI Mini Beam
& Overload Protected
Mini Beams
2 lbf to 250 lbf
5 N to 1.25 kN
Safe Overload to 10x Capacity



MBS Parallelogram
2.2 lbf to 100 lbf
9.8 N to 445 N



**MCC Miniature
Compression**
112.4 lbf
500 N



**MTFS Miniature
Tension Force**
225 lbf to 6.7K lbf
1 kN to 30 kN



**PBLCL1/PBLCL2/PBLCL3 Pillow
Block Load Bearing Load Cell**
1.1K lbf to 22.5K lbf
5 kN to 100 kN



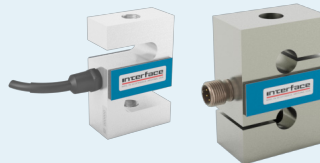
REC Rod End
1K lbf to 50K lbf
5 kN to 220 kN



SML Low Height S-Type
5 lbf to 2000 lbf
22 N to 9 kN
5 lbf, 10 lbf, 5 N, & 45 N Models
Feature 10x Overload Protection



SM S-Type
10 lbf to 1000 lbf
50 N to 5000 N



SSM/SSM2 Sealed S-Type
50 lbf to 5K lbf
200 N to 25 kN
Available with
Fatigue Rated Options



**SuperSC Miniature
S-Type**
25 lbf to 1,000 lbf
100 N to 5 kN



ULC Ultra Low Capacity
0.11 lbf to 0.45 lbf
0.5 N to 2 N
Overload Protected



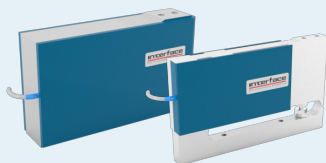
**WMC/WMCP/WMCFP
Sealed Stainless Steel**
1.1 lbf to 10K lbf
500 gf to 45 kN
Overload Protected
Male Threads
Female Threads



**SMT Overload
Protected S-Type**
1.1 lbf to 450 lbf
5 N to 2000 N
500% +1,000% FS Safe Overload



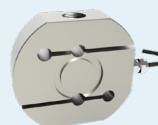
SMTM Micro S-Type
5 lbf to 50 lbf
20 N to 200 N
Micro-sized 3/4" x 3/4" x 1/4"
1,000% Safe Overload



SPI Platform Scale
3 lbf to 150 lbf
13.34 N to 667.2 N



SSB Sealed Beam
50 lbf to 10K lbf
222 N to 44.48 kN



**WSSB Welded Stainless
Steel IP68 Environment
Protected S-Beam**
551 lbf to 44.1K lbf
250 kg to 20 MT



**1216 2-Axis Axial Torsion
Flange Mount Load Cell**
Force: 250 lbf to 2K lbf
Torque: 125 lbf-in to 1K lbf-in
Force: 1.11 to 8.9 kN
Torque: 14.1 Nm to 113 Nm
Fz, Mz

MULTI-AXIS SENSORS



1516 2-Axis Axial Torsion LowProfile® Load Cell

Force: 100 lbf
Torque: 50 lbf-in
Force: 444.8 N
Torque: 5.6 Nm
Fz, Mz



2816 2-Axis Axial Torsion Flange Mount Load Cell

Force: 3.3 lbf to 15K lbf
Torque: 2K lbf-in to 7.5K lbf-in
Force: 14.6 to 66.7 kN
Torque: 226 Nm to 847 Nm
Fz, Mz



3-Axis Force

Force: 0.45 lbf to 112K lbf
Force: 2 N to 500 kN



3AFM 3-Axis Force/Torque Load Cells

Force/Torque: 4.5lbf/1.77lbf-in to 45.0lbf/35.4lbf-in
Force/Torque: 20N/200mNm to 200N/4Nm



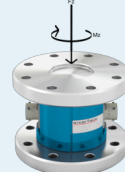
3AR Round 3-Axis

Force: 2.2K lbf to 112K lbf
Force: 10 kN to 500 kN



5200 XYZ Force & Moment

Force: 1K lbf to 50K lbf
Moment: 400 lbf-in to 20K lbf-in
Force: 4.45 kN to 222 kN
Moment: 45.2 Nm to 2.26K Nm
Fz, Mx, My



5600 2-Axis Axial Torsion

Force: 6K lbf to 180K lbf
Torque: 5K lbf-in to 300 lbf-in
Force: 27 kN to 800 kN
Torque: 560 Nm to 33K Nm
Fz, Mz



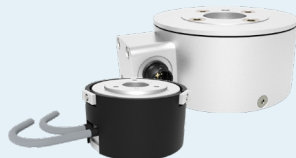
6-Axis Force Torque

Force: 11.2 to 180K lbf
Torque: 8.85 lbf-in to 354K lbf-in
Force: 50 N to 800K N
Torque: 1 Nm to 40K Nm



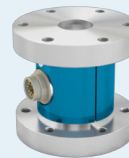
6A55RI 6-Axis Robot Flange Force-Torque Sensor

Force: 11.24 to 449.62 lbf
Torque: 44.25 to 442.54 lb-in
Force: 50 N to 2 kN
Torque: 5 Nm to 50 Nm



6ADF 6-Axis DIN Flange-Type

Force: 20 N to 1.2 kN
Torque: 1 Nm to 60 Nm



AT101 2-Axis Axial Torsion

Force: 112 lbf to 3.37K lbf
Torque: 44.3 lbf-in to 266 lbf-in
Force: 0.5 kN to 2 kN
Torque: 5 Nm to 50 Nm
Fz, Mz



AT102/AT103 2-Axis Axial Torsion

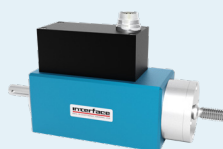
Force: 2.25K lbf to 4.5K lbf
Torque: 88.5 lbf-in to 177 lbf-in
Force: 10 kN to 20 kN
Torque: 10 Nm to 20 Nm
Fz, Mz

LOAD PINS



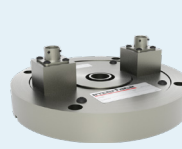
AT104 Compact Size Force & Torque

4.5/0.89 lbf/lbf-in & 11.2/4.4 lbf/lbf-in
20/0.1 N/Nm & 50/0.5 N/Nm



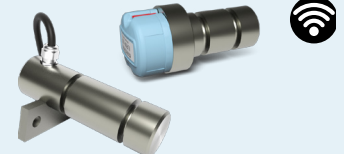
AT105 Contactless Force & Torque

22.5/17.7 lbf/lbf-in
56.2/44.3 lbf/lbf-in & 112.4/44.3 lbf/lbf-in
100/2 N/Nm
250/5 N/Nm & 500/5 N/Nm



TXY 2-Axis Force

X: 1K lbf to 2K lbf
Y: 500 lbf
X: 4.4 kN to 8.8 kN
Y: 2.2 kN



ILMP/ILPW Standard Load Pin

1.1K lbf to 3,307K lbf
0.5 MT to 1,500 MT
Keeper Plate Supplied
Environmentally Sealed to IP67
Stainless Steel Construction
Wireless

TENSION LINKS



LP/WTSPL Custom Load Pins

Up to 3,000K lbf
Up to 1,360 MT
Custom Designs Available with Amplification, Submersible, & Wireless



ITL/ WTSTL Tension Load Links

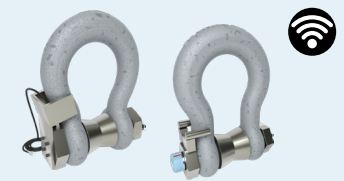
11K lbf to 220.4K lbf
5 MT to 100 MT
Custom Designs Available, Submersible, & Wireless



WTSATL/ WTSATL-JR Lightweight & Compact Aluminum Wireless Tension Load Link

11K lbf to 661K lbf
5 MT to 300 MT

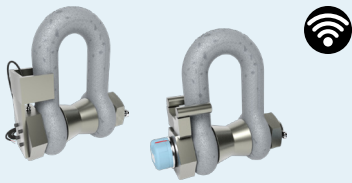
LOAD SHACKLES



ISHK-B/ WTSSHK-B Bow Type Crosby™ Cabled Load Shackle

2.2K lbf to 2,205K lbf
1 MT to 1K MT
Submersible
Wireless

HAZARDOUS ENVIRONMENTS



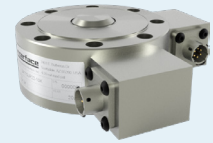
ISHK-D/ WTSSHK-D 'D' Type Crosby™ Cabled Load Shackle
 2.2K lbf to 77.2K lbf
 1 MT to 35 MT
 Submersible
 Wireless



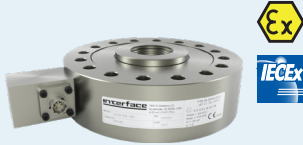
WTSSHK-B-HL/WTSSHK-B-JR Wireless Bow Load Shackle
 7.17K lbf to 2,205K lbf
 3.25 MT to 1K MT
 Submersible & Wireless



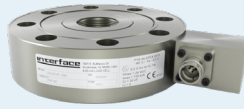
3410 Intrinsically Safe LowProfile®
 750 lbf to 10K lbf



3411 Intrinsically Safe Compression Only LowProfile®
 750 lbf to 60K lbf
 3.37 kN to 267 kN



3416/3432 Coil Tubing Intrinsically Safe Universal
 20K lbf to 60K lbf



3420 Coil Tubing Intrinsically Safe Universal
 40 lbf to 50K lbf



3540 Sealed Column Load Cell with Integral Cable for Hazardous Environments
 55K lbf



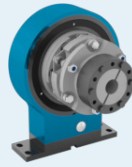
SSMH Selaed Hazardous Environment Intrinsically Safe S-Type
 50 lbf to 5K lbf
 200 N to 25 kN



TORQUE TRANSDUCERS



AxialTQ® Rotary Torque
 885 lbf-in to 88.5K lbf-in
 100 Nm to 10K Nm



T1 Torque Coupling
 400 lbf-in to 9K lbf-in
 50 Nm to 1K Nm
 Bearingless



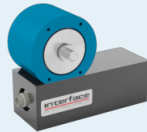
T2/T4/T6 Ultra & Standard Precision & Dual Range
 0.88 lbf-in to 177K lbf-in
 0.1 Nm to 20K Nm
 44.3/4.43 lbf-in to 4.43K/443 lbf-in
 5/0.5 Nm to 500/50 Nm



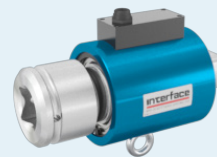
T3/T5/T7 Ultra & Standard Precision & Dual Range Pedestal Mount
 0.88 lbf-in to 177K lbf-in
 0.1 Nm to 20K Nm
 44.3/4.43 lbf-in to 4.43K/443 lbf-in
 5/0.5 Nm to 500/50 Nm



T8 General Purpose Shaft Style
 1.77 lbf-in to 1.77K lbf-in
 0.2 Nm to 200 Nm



T11 Bearingless
 0.04 lbf-in to 1.327K lbf-in
 0.005 Nm to 150 Nm



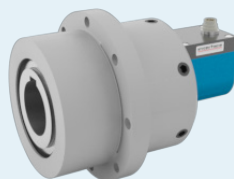
T12 Square Drive
 0.88 lbf-in to 44K lbf-in
 0.1 Nm to 5K Nm
 USB Option Available



T15 Hex Drive
 0.88 lbf-in to 44K lbf-in
 0.1 Nm to 5K Nm
 USB Option Available



T18 General Purpose Contactless Low Cost
 88.5 lbf-in to 885 lbf-in
 10 Nm to 100 Nm



T22 Pulley Belt
 177 lbf-in to 44K lbf-in
 20 Nm to 5K Nm
 High Rairdal

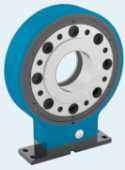


T23 Shaft Style Contactless Low Cost
 2.7K lbf-in to 4.4K lbf-in
 300 Nm to 500 Nm



T25 High Speed
 0.885 lbf-in to 44.3K lbf-in
 0.1 Nm to 5K Nm
 USB Option Available

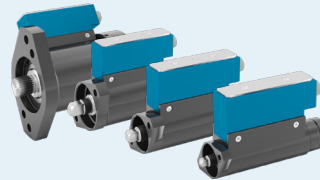




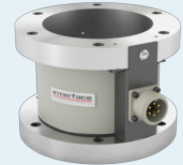
T27 Hollow Flange Bearingless
443 lbf-in to 8.85K lbf-in
50 Nm to 1K Nm



T28 Slip-Ring Drive
8.85 lbf-in to 44.3K lbf-in
55 Nm to 1K Nm



T31, T32, T33, & T34 Spindle Torque
8.85 lbf-in to 4.43K lbf-in
1 Nm to 500 Nm
Speeds Up to 2K RPM Integrated
Speed/Angle Measurement



5330 Hollow Flange Style
60 lbf-in to 100K lbf-in
6.8 Nm to 11.3K Nm



5350/5355 Solid Flange Style
10 ozf-in to 100K lbf-in
0.07 Nm to 11.3K Nm



5400 Flange Style
1K lbf-in to 500K lbf-in
110 Nm to 55K Nm



MRT/MRTP Miniature Flange Style
1.77 lbf-in to 177 lbf-in
0.2 Nm to 20 Nm
7x Overload Protected



MRT2/MRT2P Miniature Overload Protected Flange Style
1.77 lbf-in to 443 lbf-in
0.2 Nm to 50 Nm
3x Overload Protected



TS11 Flange Style
88.5 lbf-in to 177K lbf-in
10 Nm to 20K Nm



TS12 Shaft Style
0.04 lbf-in to 177K lbf-in
0.005 Nm to 20K Nm



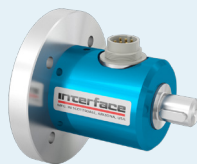
TS14 Square Drive
8.85 lbf-in to 44.2K lbf-in
1 Nm to 5K Nm



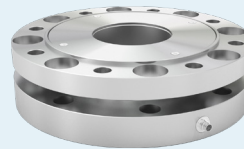
TS15/TS16 Male & Female Square Drive to Flange
1.77 lbf-in to 44.3K lbf-in
2 Nm to 5K Nm



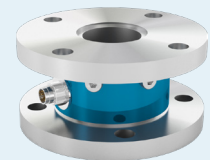
TS17 Hex Drive
1.77 lbf-in to 177 lbf-in
0.2 Nm to 20 Nm



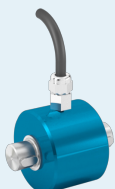
TS18 Shaft to Flange
17.7 lbf-in to 17.7K lbf-in
2 Nm to 2K Nm



TS19 Short Flange
443 lbf-in to 88.5K lbf-in
50 Nm to 10K Nm



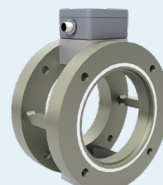
TS20 Hollow Flange
88.5 lbf-in to 1.77K lbf-in
10 Nm to 200 Nm



TS21 Compact Miniature Keyed Shaft
8.85 lbf-in to 885 lbf-in
1 Nm to 100 Nm



TS22 Low Capacity Miniature
0.005 lbf-in to 20 lbf-in
0.04 Nm to 177 Nm



TSCF C-Face Flange
88.5 lbf-in to 885 lbf-in
10 Nm to 100 Nm



TSQ High Capacity Square Drive
300K lbf-in to 3,000K lbf-in
34K Nm to 340K Nm

INSTRUMENTATION



1280 Programmable Weight Indicator & Controller
Analog Load Cell Scales
Total Scales
Serial Scales
Program Scales



480 Bidirectional Weight Indicator
Digital
Environmentally Protected



4850 Battery Powered Bluetooth Weight Indicator
Digital, Environmentally Protected,
Battery Powered, Bluetooth



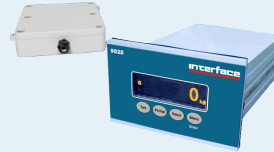
920i Programmable Weight Indicator & Controller
Up to 32 Scale Accumulators
Millivolt Calibration
5-Point Linearization



9325, 9325-NU Portable Sensor Display
Digital, H&H Held, Battery Powered, TEDS Ready



9330 High Speed Portable Display & Data Logger
3750Hz Peak Capture



9825/9825-AI General Purpose Indicator
Bipolar, High Speed, Analog



9840-400-1-T-4 4-Channel Intelligent Indicator
Digital 4-Channel
Intelligent Indicator



9840 Calibration Grade Multi-Channel Indicator
Stores Multiple Calibrations



9840C TEDS Read/Write Intelligent Indicator
Stores Multiple Calibrations



9840TQ mV/V Input Torque Transducer Indicator
Digital & Intelligent mV/V
Input Torque Transducer Indicator



9845 Rugged Calibration Grade Multi-Channel Load Cell Indicator
Digital, Intelligent, Rugged



9850 Torque Transducer & Load Cell Indicator
25 lbf to 300 lbf
111 N to 1.33 kN



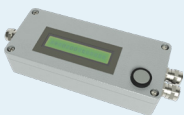
9870 High-Speed High Performance TEDS Ready Indicator
High Speed
Digital



9890 Strain Gage, Load Cell, & mV/V Indicator
mV/V Input Indicator



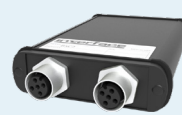
9894 Analog Input Process Indicator
Analog Input Process Indicator



BSC1-HD Single Channel PC Interface Module with Analog Output
Single Channel



BSC1A Strain Gage Amplifier
Single Channel, Very Compact,
Light Weight



BSC2 Dual Channel PC Interface Module
Dual Channel



BSC4A Bridge Amplifier & PC Interface Module
4 Channel



BSC6A-HD44 6-Channel Strain Gage Amplifier
6 Channel
Analog Output



BTS Bluetooth® Telemetry System
Bluetooth Strain Gage Transmitter



BX3-HD44-CAN/BX3-M12-CAN 3-Channel CANbus & USB Strain Gage Amplifier
3-Channel Capability



BX6-ETH/CAN 6-Channel CANbus & Ethernet Strain Gage Amplifier
6 Channel



BX6-HD44-ECP Strain Gage Amplifier with EtherCat Protocol
6 Channel



BX8-AS Data Acquisition System & Amplifier
8 Channel



BX8-HD15/ BX8-HD44 Data Acquisition System & Amplifier
8 Channel



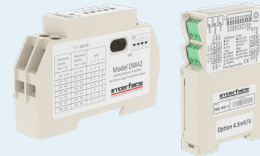
CSC/LCSC Environmentally Sealed OEM Inline Signal Conditioner
Analog or Digital Output



CSD Embedded Load Cell Converter & Digitizer Module
RS232, RS485, Modbus, CANbus, CANopen, & ASCII



DIG-USB/DIG-USB-F USB & Fast USB Output Module
Configuration, Calibration, Graphing, Logging, & Display Software



DMA2/ISG DIN Rail Mount Signal Conditioner
10-28VDC Power
Selectable Full Scale
Input Range 5-50mV
Isolated power supply



ILM In-Line IO-Link Amplifier
In-Line Amplifier



INF-USB3 PC Input Module
Single Channel
mV/V, VDC, or mA Input



INF1/IN4 Single & Multi Sensor Weight Transmitter & Indicator
RS485, Analog, CANopen, PROFIBUS, Modbus/TCP, Ethernet TCP/IP, Ethernet/IP, PROFINET IO, EtherCAT4



JB104SS 4-Channel Stainless Steel Junction Box
4 Channel Summing Capability



JB1100 4-Channel Advanced Signal Conditioning Transmitter Indicator & Junction Box
Four independent scales or four load cell inputs



SGA AC/DC Powered Signal Conditioner
AC/DC Powered
Millivolt to Analog Converter



SI-USB4 4 Channel USB interface Module
mV/V or mA Input



VSC2 Rugged Compact Vehicle Powered Signal Conditioner
High Accuracy Precision
Differential Amplifier



WTS-AM-1E/WTS-AM-1F Wireless Strain Bridge Transmitter Module
For Strain Bridge Input
For Fast Measurements

WIRELESS



WTS-AM-2/WTS-AM-3
**Wireless Voltage
 Sensor Transmitter**
 For Voltage Input
 For mA Input



WTS-AR **Wireless
 Repeater Module**
 Extends & Enhances
 Range of WTS Devices



WTS-HK-S **Next-Generation
 Wireless Handheld**
 Unlimited Transmitters
 Up to 12 Transmitters



WTS-BS-2 **Wireless Receiver
 with Industrial Interfaces**
 Controllable Baud Rates
 Configure & Calibrate WTS Devices



WTS-BS-3E/WTS-BS-4 **Wireless
 Receiver with USB Interface**
 Comes with WTS Toolkit
 Software & Log 100 Software



WTS-BS-5 **Wireless Analog
 Output Receiver Module**
 Provide Analog Output for WTS
 Acquisition Modules



WTS-BS-6 **Wireless Telemetry
 Dongle Receiver**
 Includes WTS Toolkit
 Software & Log 100 Software



WTS-GW1 **Wireless
 Gateway with Modbus
 & ASCII Serial Output**
 Capable of Gathering Data from
 Up to 100 Acquisition Modules



WTS-LD1/WTS-LD2 **Wireless
 Large LED Display**
 Large Screen with 4-digit/6-digit
 4 in (100/102 mm) LED display



WTS-RM1 **Wireless Relay
 Output Receiver Module**
 Accepts Up to 16 Devices



WTS-SO **Wireless Interface
 with ASCII Serial Output**
 Serial Output to Printer,
 Display, PC or PLC



WWWP **Wireless Wheel
 Weighing Platform**
 Up to 16 Individual Pads Communicate
 Wireless to the Indicator

CALIBRATION EQUIPMENT



CX/ECX **Precision
 mV/V Transfer Standard**
 Precision mV/V Output
 Analog or Digital Output



GS-SYS03/ GS-SYS04 **Gold
 Standard® Portable Load Cell
 Calibration System**
 Reduces Calibration Time 50-90%
 Automatic Calibration & Archiving
 Custom Report Writer

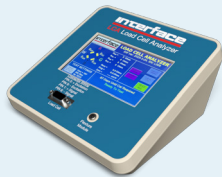


GS-SYS **Gold Standard®
 Calibration System
 Load Frame**
 Capacities up to 100K lbf



IFVF **Interface Force
 Verification Frame**
 Up to 5,000 lbf capacity
 Portable, Lightweight,
 & Accurate

ACCESSORIES



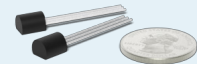
LCA **Load Cell Analyzer**
 User-friendly diagnostic tool
 designed for fast & accurate
 testing of load cells in the field
 or on the bench



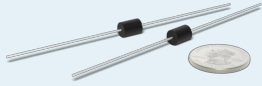
EVALUATOR 3 **Load
 Cell Simulator**
 Used in testing, troubleshooting
 mV/V instrumentation



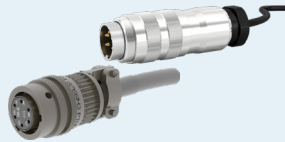
IF500 **Load
 Cell Simulator**
 Set "ANY" mV/V Value within ± 5 mV/V
 State-of-the-Art,
 Microprocessor Based Design



TEDS **Transducer
 Electronic Data Sheet**
 Provides Sensor with
 Electronic Identification
 Plug & Play Ready



RCAL Resistors
Precision wire-wound
5 ppm/°C, 0.01%
Used for shunt calibration



MC/CN Mating Connectors
Interconnects between
load cell & Instruments



CT Cable Assemblies
For connecting transducers
to instrumentation
Standard & custom lengths
Shielded cable



9800 Series Single & Dual Channel Internal Mount Enclosures
Internally Mounted Plastic
NEMA 4 Enclosure for 1/8 Din Rail



9800 Series Single & Dual Channel Benchtop Enclosures
Designed For Benchtop
& Laboratory Use



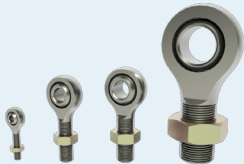
9800 Series Single & Dual Instrument Enclosures
NEMA 4 Enclosure Provides a
Convenient way to Mount Single
& Dual Instruments



LowProfile® Load Cell Base Kits
Heat Treated, High Strength Bases
Available in Standard Sizes



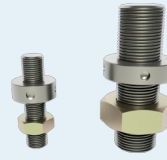
TP/BP Mounting Plates
Eliminates the requirement
for expansion assemblies
in most installations



REB Rod End Bearings
For tension applications
Reduces alignment error
Metric sizes available



TA/THD Thread Adapters
Adapts male to female
Common Interface thread sizes
Adapts one thread size to another



CA Calibration Adapters
Improves accuracy
Spherical end for compression loading
Metric sizes available



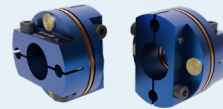
CLV Clevises
Precision machined
Commonly used with REBs
Male threads



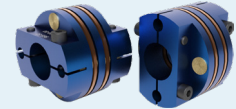
JN Jam Nuts
Used with REBs, clevises
& calibration adapters
Flat, parallel surfaces
Standard thread sizes



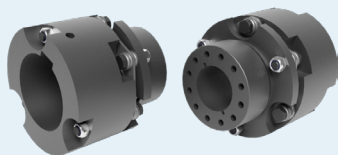
LB Load Cell Load Buttons
Converts universal cell
to compression only
Spherical loading surface



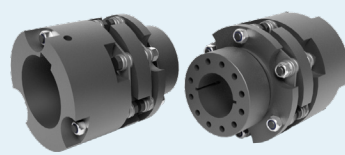
Low Capacity Floating Mount Single Flex Couplings
Capacities
0.88 to 265 lbf-in
0.1 to 30Nm



Low Capacity Pedestal Mount Double Flex Couplings
Capacities
0.88 to 265 lbf-in
0.1 to 30Nm



Floating Mount Single Flex Couplings
Capacities
442 to 8850 lbf-in
50 to 1000 Nm



Pedestal Mount Double Flex Couplings
Capacities
442 to 44.3K lbf-in
50 to 5K Nm

ICON LEGEND



TEDS - Plug & Play Ready



Mobile App Available



USB Option Available



Bluetooth®



Software Available



Wireless



ATEX Certification



IECEx Certification

Interface is the world's trusted leader in technology, design and manufacturing of force measurement solutions.

Our clients include a "who's who" of the aerospace, automotive and vehicle, medical device, energy, industrial manufacturing, test and measurement industries.

Interface engineers around the world are empowered to create high-level tools and solutions that deliver consistent, high quality performance. These products include load cells, torque transducers, multi-axis sensors, wireless telemetry, instrumentation and calibration equipment.

Interface, Inc., was founded in 1968 and is a US-based, woman-owned technology manufacturing company headquartered in Scottsdale, Arizona.