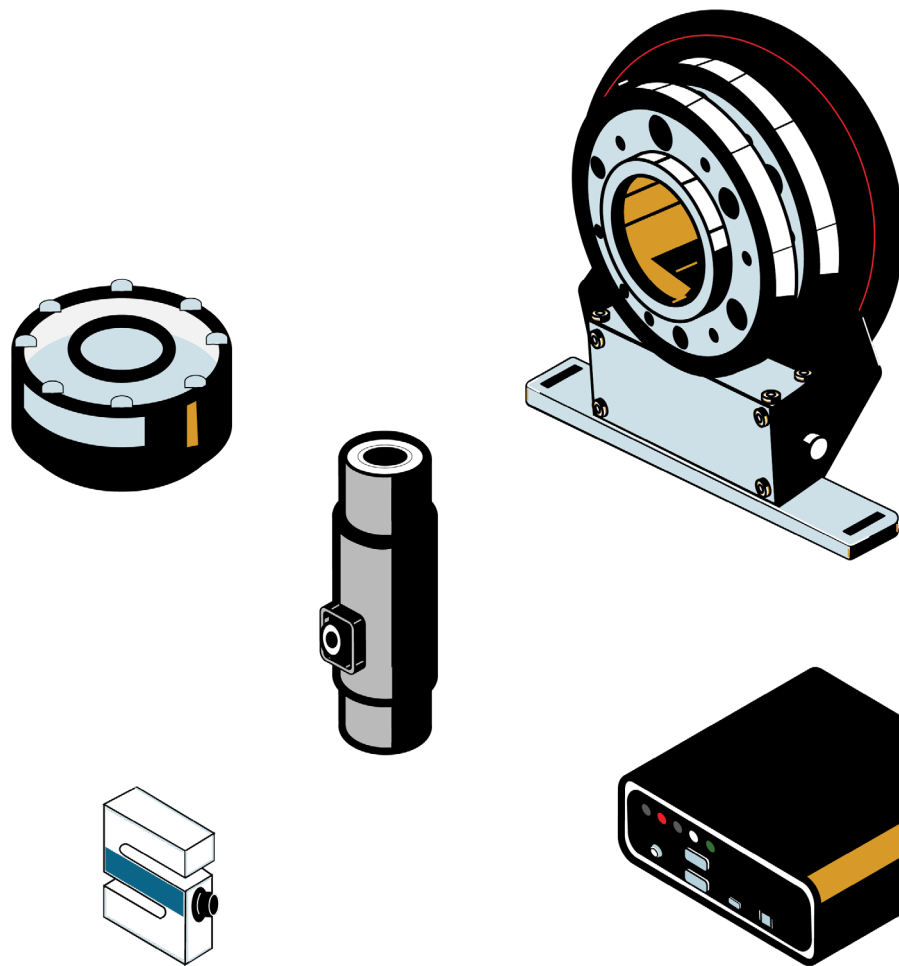


Interface

Summary Catalog



Summary Catalog v1.6 10-09-2023

interface
FORCE MEASUREMENT SOLUTIONS

The World Leader in Force Measurement Solutions™



LOWPROFILE® LOAD CELLS



1000 Fatigue Rated
250 lbf to 1,000K lbf
1.25 kN to 4,448 kN
Fully Reversed High Cyclic Loading



**1100 Ultra Precision
Very High Accuracy**
300 lbf to 200K lbf
1.33 kN to 890 kN



1200 Standard Precision
300 lbf to 2,000K lbf
1.33 kN to 8,896 kN



**12X8 Flange Mount
Standard Precision**
30K lbf to 330K lbf
133 kN to 1,468 kN



**1500 Compact
Low Capacity**
25 lbf to 300 lbf
111 N to 1.33 kN



**1600 Gold Standard®
Calibration**
500 lbf to 200K lbf
2.22 kN to 900 kN
4% lower load limit
per ASTM E74



1700 Flange Mount
220 lbf to 14K lbf
1 kN to 63 kN
Mounts Directly to Cylinders



**1800 Platinum
Standard Calibration**
1.1K lbf to 55K lbf
4.89 kN to 245 kN
Capable of 2% lower
load limit per ASTM E74



2400 Stainless Steel
100 lbf to 300K lbf
445 N to 1,334 kN
Environmentally Sealed
Hermetic Seal Available



**3200 Precision
Stainless Steel**
2.5K lbf to 100K lbf
11.1 N to 445 kN
Hermetically Sealed



**3410/3420/3416/3430
Intrinsically Safe Load Cells**
750 to 60K lbf
3.37 kN to 267 kN



**Internally Amplified
Load Cells**
3-Wire Amplified Tension
& Compression Load Cells

OTHER LOAD CELLS



**BPL Ultra Low Height
Compression Only**
50 lbf to 500 lbf
250 N to 2,500 N
Self-Centering in all Directions
High Output 4 mV/V



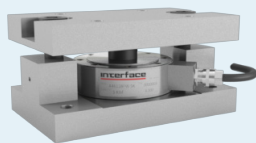
**WSSCL Stainless Steel
Low Profile Compression
Load Cell**
220 lbf to 440.9K lbf
100 kg to 200 MT



**WTS 1200 Standard Precision
LowProfile® Wireless Load Cell**
300 lbf to 2,000K lbf
1.33 kN to 8,896 kN



**2000/2160/2200/2300
Column and Canister
Load Cells**
50K lbf to 1M lbf
630 kN to 4450 kN



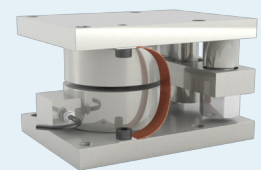
**A4200/A4600
WeighCheck™ Load Cells**
2.5 lbf to 50K lbf
11.1 kN to 222 kN



**IPCD Pressure Compensated
Downhole Load Cell**
High accuracy
Maintenance free

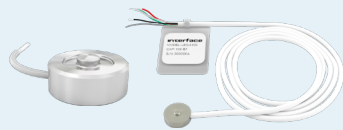


REC Rod End
1K lbf to 50K lbf
5 kN to 220 kN

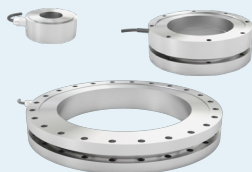


**WSSCL-MOUNT Weighing
Assembly**
220 lbf to 440.9K lbf
100 kg to 200 MT

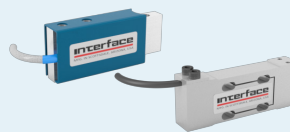
MINI LOAD CELLS



**ConvextBT/LBMU/LBM
Load Buttons**
25 lbf to 50K lbf
0.11 kN to 130 kN



**LW/LWPF1/LWPF2
Load Washer**
5 lbf to 135K lbf
0.02 kN to 600 kN



**MB/MBP/MBI Mini Beam
and Overload Protected
Mini Beam**
2 lbf to 2500 lbf
10 N to 1.25 kN
Safe Overload to 10x Capacity



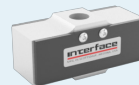
MBS Parallelogram Load Cell
2.2 lbf to 100 lbf
9.8 N to 445 N



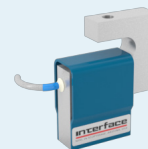
**MCC MCC Miniature
Compression Load Cell**
112.4 lbf
500 N



**PBL1/PBL2/PBL3 Pillow
Block Load Bearing Load Cell**
1.1K lbf to 22.5K lbf
5 kN to 100 kN



SML Low Height S-Type
5 lbf to 2000 lbf
22 N to 9 kN
5 lbf, 10 lbf, 5 N, and 45 N Models
Feature 10x Overload Protection



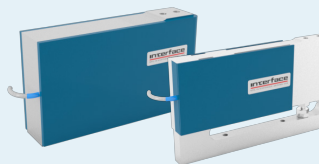
SM S-Type
10 lbf to 1000 lbf
50 N to 5000 N



**SMT Overload
Protected S-Type**
1.1 lbf to 450 lbf
5 N to 2000 N
500% +1,000% FS Safe Overload



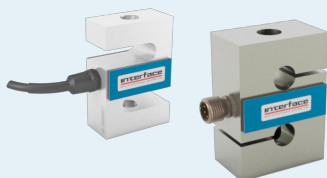
SMTM Micro S-Type
5 lbf to 50 lbf
20 N to 200 N
Micro-sized 3/4" x 3/4" x 1/4"
1,000% Safe Overload



SPI Platform Scale Load Cell
3 lbf to 150 lbf
13.34 N to 667.2 N



SSB Sealed Beam
50 lbf to 10K lbf
222 N to 44.48 kN



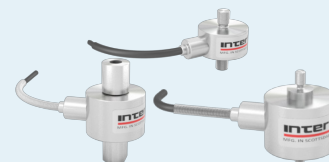
SSM/SSM2 Sealed S-Type
50 lbf to 5K lbf
200 N to 25 kN
Available with Fatigue Rated Options



**SuperSC S-Type
Miniature Load Cell**
25 lbf to 1,000 lbf
100 N to 5 kN

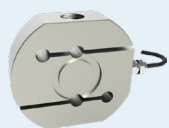


ULC Ultra Low Capacity
0.11 lbf to 0.45 lbf
0.5 N to 2 N
Overload Protected



**WMC/ WMCP/ WMCFP
Sealed Stainless Steel**
1.1 lbf to 10K lbf
500 gf to 45 kN
Overload Protected
Male Threads

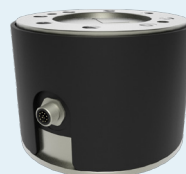
MULTI-AXIS SENSORS



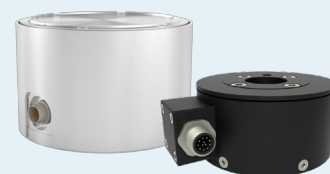
**WSSB Welded Stainless
Steel IP68 Environment
Protected S-Beam**
551 lbf to 44.1K lbf
250 kg to 20 MT



3-Axis Force
Force: 0.45 lbf to 112K lbf
Force: 2 N to 500 kN



**3AR Series Round
3-Axis Load Cells**
Force: 2.2K lbf to 112K lbf
Force: 10 kN to 500 kN



6-Axis Force Torque
Force: 11.2 to 180K lbf
Torque: 8.85 lbf-in to 354K lbf-in
Force: 50 N to 800K N
Torque: 1 Nm to 40K Nm

MULTI-AXIS SENSORS CONTINUED



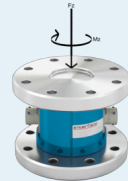
6ADF Series 6-Axis DIN Flange-Type Load Cells
Force: 20 N to 1.2 kN
Torque: 1 Nm to 60 Nm



1216/1516/2816 Axial Torsion
Force: 100 to 15K lbf
Torque: 50 to 7.5K lbf-in
Force: 1.11 to 66.7 kN
Torque: 5.6 to 847 Nm
Fz, Mz

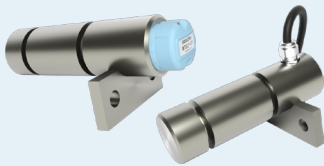


5200 XYZ Force and Moment
Force: 1K to 50K lbf
Moment: 400 to 20K lbf-in
Force: 4.45 to 222 kN
Moment: 45.2 to 2.26K Nm
Fz, Mx, My

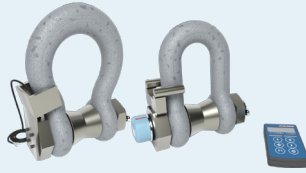


5600 2-Axis Axial Torsion
Force: 6K to 180K lbf
Torque: 5K to 300 lbf-in
Force: 27 to 800 kN
Torque: 560 to 33K Nm
Fz, Mz

LOAD PINS, TENSION LINKS, AND LOAD SHACKLES



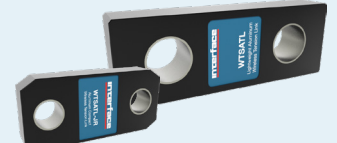
LP/WTSLP Load Pins
Up to 3,000K lbf
Up to 13.3 kN
Custom Designs Available with Amplification, Submersible, Wireless, and ATEX Options



ISHK/WTSSHK Load Shackles
2.2K lbf to 2,205K lbf
1 mt to 1K mt
Available with Amplification, Submersible, Wireless, and ATEX Options



ITL/WTSTL Tension Links
11K lbf to 220.4K lbf
5 mt to 100 mt
Custom Designs Available with Amplification, Submersible, Wireless, and ATEX Options



WTSATL/ WTSATL-JR Lightweight and Compact Aluminum Wireless Tension Link
2.2K lbf to 661K lbf
1 mt to 300 mt

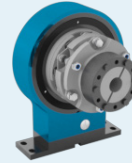
ROTARY TORQUE TRANSDUCERS



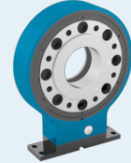
AT104 Compact Size Force and Torque Transducer
4.5/0.89 lbf/lbf-in & 11.2/4.4 lbf/lbf-in
20/0.1 N/Nm & 50/0.5 N/Nm



AxialTQ[®] Rotary Torque
885 lbf-in to 88.5K lbf-in
100 Nm to 10K Nm



T1 Torque Coupling
400 lbf-in to 9K lbf-in
50 Nm to 1K Nm
Bearingless



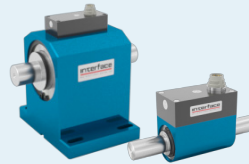
T27 Hollow Flange Bearingless
443 lbf-in to 8.85K lbf-in
50 Nm to 1K Nm



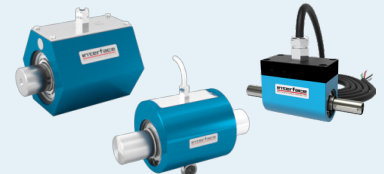
T2/T4 Ultra and Standard Precision
0.88 lbf-in to 177K lbf-in
0.1 Nm to 20K Nm



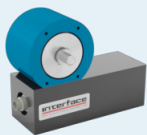
T3/T5 Ultra and Standard Precision Pedestal Mount
0.88 lbf-in to 177K lbf-in
0.1 Nm to 20K Nm



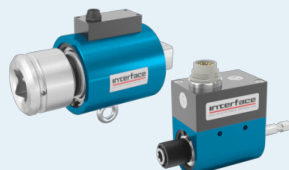
T6/T7 Dual Range
44.3/4.43 lbf-in to 4.43K lbf-in to 443K lbf-in
5/0.5 Nm to 500/50 Nm



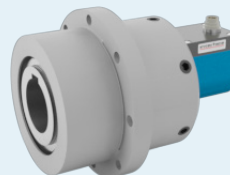
T8/T18/T23 General Purpose
1.77 lbf-in to 4.43K lbf-in
0.2 Nm to 500 Nm



T11 Bearingless
0.04 lbf-in to 1.327K lbf-in
0.005 Nm to 150 Nm



T12/T15 Square Drive
0.88 lbf-in to 177K lbf-in
0.1 Nm to 5K Nm



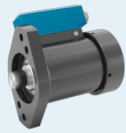
T22 Pulley Belt
177 lbf-in to 44K lbf-in
20 Nm to 5K Nm
High Roldal



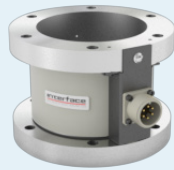
T25 High Speed
0.885 lbf-in to 44.3K lbf-in
0.1 Nm to 5K Nm



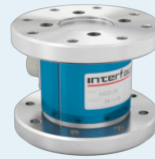
REACTION TORQUE TRANSDUCERS



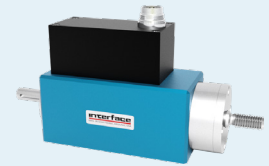
T31, T32, T33, & T34
Spindle Torque
 8.85 lbf-in to 4.43K lbf-in
 1 Nm to 500 Nm
 Speeds Up to 2K RPM Integrated
 Speed/Angle Measurement



5330 Hollow Flange
 60 lbf-in to 100K lbf-in
 6.8 Nm to 11.3K Nm



5400 Series Flange Style
 1K lbf-in to 500K lbf-in
 110 Nm to 55K Nm



**AT105 Contactless Force
 Torque Transducer**
 22.5/17.7 lbf/lbf-in 56.2/44.3 lbf/lbf-in &
 112.4/44.3 lbf/lbf-in
 100/2 N/Nm 250/5N/Nm & 500/5 N/Nm



**MRT/MRTP Miniature
 Reaction Torque Series**
 1.77 lbf-in to 177 lbf-in
 0.2 Nm to 2 Nm
 7x Overload Protected



**MRT2/MRT2P Miniature
 Reaction Torque Series**
 1.77 lbf-in to 443 lbf-in
 0.2 Nm to 50 Nm
 3x Overload Protected

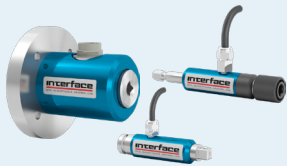


TS11 Flange Style
 88.5 lbf-in to 177K lbf-in
 10 Nm to 20K Nm



TS12 Shaft Style
 0.04 lbf-in to 177K lbf-in
 0.005 Nm to 20K Nm

INSTRUMENTATIONS



TS14/TS15/TS17
Square and Hex Drive
 1.77 lbf-in to 17.7K lbf-in
 0.2 Nm to 5K Nm



**TSQ High Capacity
 Square Drive**
 300K lbf-in to 3,000K lbf-in
 34K Nm to 340K Nm



**480/482 Bidirectional
 Weight Indicator**
 Digital
 Environmentally Protected



**9330 High Speed Portable
 Display and Data Logger**
 3750Hz Peak Capture



**1280 Programmable Weight
 Indicator and Controller**
 Analog load cell scales
 Total scales
 Serial scales
 Program scales



**920i Programmable Weight
 Indicator and Controller**
 32 scale accumulators
 Millivolt calibration
 5-point linearization and
 geographical calibration



9325 Portable Sensor Display
 Digital
 Battery & USB Powered
 TEDS Ready



**9812-WTS Wireless Panel
 Mount Display For Single
 Transmitters**
 Wireless communication
 Compatible with all WTS products



**9825 General
 Purpose Indicator**
 General Purpose Instrument
 mV/V Input Indicator



**9840 Intelligent Calibration
 Grade Digital Indicator**
 Stores Multiple Calibrations



**9840-400-1-T-4 4-Channel
 Intelligent Indicator**
 Digital 4-Channel
 Intelligent Indicator



**9840TQ mV/V Input Torque
 Transducer Indicator**
 Digital and Intelligent mV/V
 Input Torque Transducer Indicator



INSTRUMENTATIONS CONTINUED



9850 mV/V Input Torque Transducer Indicator
25 lbf to 300 lbf
111 N to 1.33 kN



9870 High-Speed High Performance TEDS Ready Indicator
High Speed Digital



9890 Strain Gage, Load Cell, and mV/V Indicator
mV/V Input Indicator



9894 Analog Input Process Indicator
Analog Input Process Indicator



BSC1/BSC2/BSC4 Multi-Channel Bridge Amplifier or PC Interface Module
1 Channel
2 Channel
4 Channel



BTS Bluetooth Telemetry System
Bluetooth Strain Gage Transmitter



BX6-BT Portable 6-Channel High Speed Bluetooth Data Logger
Compact Size
Digital Inputs & Outputs



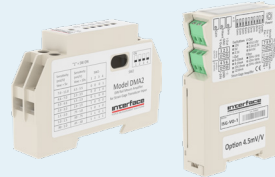
BX8 Data Acquisition and Amplifier System
8 Channel



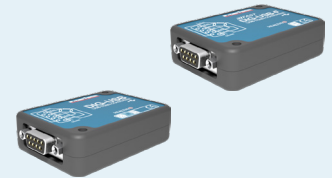
CSC/LCSC Environmentally Sealed OEM Inline Signal Conditioner
Analog or Digital Output



CSD Embedded Load Cell Converter and Digitizer Module
RS232, RS485, Modbus, CANbus, CANopen, and ASCII



DMA2/ISG DIN Rail Mount Signal Conditioner
10-28VDC Power
High Accuracy



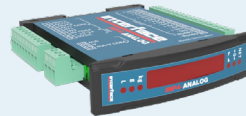
DIG-USB/DIG-USB-F USB and Fast USB Output Module
Configuration, Calibration, Graphing, Logging, and Display Software



INF-USB3/SI-USB4 PC Input Module
Single and Dual Channel
mV/V, VDC, or mA Input



INF1 Single Sensor Weight Transmitter and Indicator
RS485, Analog, CANopen, PROFIBUS, Modbus/TCP, Ethernet TCP/IP, Ethernet/IP, PROFINET IO, EtherCAT4



INF4 Two, Three, and Four Sensor Weight Transmitter and Indicator
RS485, Analog, CANopen, PROFIBUS, Modbus/TCP, Ethernet TCP/IP, Ethernet/IP, PROFINET IO, EtherCAT4



JB104SS 4-Channel Stainless Steel Junction Box
4 Channel Summing Capability



JB1100 4-Channel Advanced Signal Conditioning Transmitter Indicator and Junction Box
Four independent scales or four load cell inputs



SGA AC/DC Powered Signal Conditioner
AC/DC Powered
Millivolt to Analog Converter



VSC2 Rugged Compact Vehicle Powered Signal Conditioner
High Accuracy Precision
Differential Amplifier



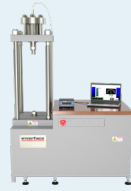
WTS Wireless Telemetry System
Sensor Transmitters
Receivers
Displays



CALIBRATION



CX Series Precision mV/V Transfer Standard
Precision mV/V Output
Analog or Digital Output



GS-SYS Gold Standard[®] Calibration System Load Frame
Capacities up to 100K lbf



GS-SYS03 Gold Standard[®] Portable Load Cell Calibration System
Reduces Calibration Time 50-90%
Automatic Calibration and Archiving



GS-SYS04 Gold Standard[®] Portable E4 Machine Calibration System
Reduces Calibration Time 50-90%
Automatic Calibration and Archiving



IFVF Interface Force Verification Frame
Up to 5,000 lbf capacity
Portable, Lightweight, and Accurate

Calibration and Repair Services

- NIST Traceability
- ISO 17025 Accredited
- ASTM E74 Calibration
- ANSI/NCSL Z540
- MIL-STD-45662A
- ISO 376

Accreditations

Interface is A2LA accredited (#1991.01) to perform the most accurate universal calibrations on all Interface and competitive force and torque transducers in 5 days



TEDS - Plug & Play Ready



USB Option Available



Software Available

Interface force measurement products are available in many design configurations for project designs requiring the highest performance.

To learn more about the Interface products or force measurement solutions call 480-948-5555.
www.interfaceforce.com

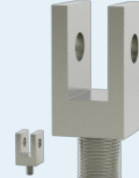
ACCESSORIES



CT Cable Assemblies
For connecting transducers to instrumentation
Standard and custom lengths
Shielded cable



CA Calibration Adapters
Improves accuracy
Spherical end for compression loading
Metric sizes available



CLV Clevises
Precision machined
Commonly used with REBs
Male threads



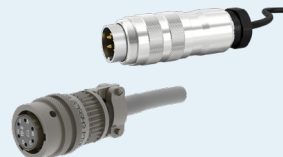
EVALUATOR 3 Interface Force Verification Frame
Used in testing, troubleshooting
mV/V instrumentation



JN Jam Nuts
Used with REBs, clevises and calibration adapters
Flat, parallel surfaces
Standard thread sizes



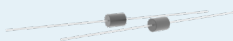
LB Load Cell Load Buttons
Converts universal cell to compression only
Spherical loading surface



MC/CN Mating Connectors
Interconnects between load cell and instruments



TP/BP Mounting Plates
Eliminates the requirement for expansion assemblies in most installations



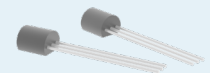
RCAL Resistors
Precision wire-wound
5 ppm/°C, 0.01%
Used for shunt calibration



REB Rod End Bearings
For tension applications
Reduces alignment error
Metric sizes available



TA/THD Thread Adapters
Adapts male to female
Common Interface thread sizes
Adapts one thread size to another



TEDS Interface Force Verification Frame
Provides Sensor with Electronic Identification
Plug & Play Ready

Interface is the world's trusted leader in technology, design and manufacturing of force measurement solutions.

Our clients include a "who's who" of the aerospace, automotive and vehicle, medical device, energy, industrial manufacturing, test and measurement industries.

Interface engineers around the world are empowered to create high-level tools and solutions that deliver consistent, high quality performance. These products include load cells, torque transducers, multi-axis sensors, wireless telemetry, instrumentation and calibration equipment.

Interface, Inc., was founded in 1968 and is a US-based, woman-owned technology manufacturing company headquartered in Scottsdale, Arizona.