

LOWPROFILE® LOAD CELLS



1000 Fatigue Rated
250 lbf to 1,000K lbf
1.25 kN to 4,448 kN
Fully Reversed High Cyclic Loading



**1100 Ultra Precision
Very High Accuracy**
300 lbf to 200K lbf
1.33 kN to 890 kN



1200 Standard Precision
300 lbf to 2,000K lbf
1.33 kN to 8,896 kN



**12X8 Flange Mount
Standard Precision**
30K lbf to 330K lbf
133 kN to 1,468 kN



**1500 Compact
Low Capacity**
25 lbf to 300 lbf
111 N to 1.33 kN



1700 Flange Mount
220 lbf to 14K lbf
1 kN to 63 kN
Mounts Directly to Cylinders



2400 Stainless Steel
100 lbf to 300K lbf
445 N to 1,334 kN
Environmentally Sealed
Hermetic Deal Available



**3200 Precision
Stainless Steel**
2.5K lbf to 100K lbf
11.1 N to 445 kN
Hermetically Sealed



**1600 Gold Standard®
Calibration**
500 lbf to 200K lbf
2.22 kN to 900 kN
4% lower load limit
per ASTM E74



**1800 Platinum
Standard® Calibration**
1.1K lbf to 55K lbf
4.89 kN to 245 kN
Capable of 2% lower
load limit per ASTM E74



**Internally Amplified
Load Cells**

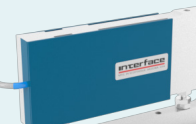


MB Mini Beam
5 lbf to 250 lbf
0.2 kN to 1.25 kN

MINI LOAD CELLS



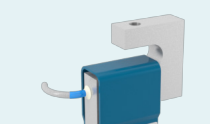
**MBI Overload Protected
Mini Beam**
2 lbf to 10 lbf
10 N to 50 N
Safe Overload to 10x Capacity



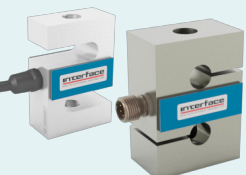
**SPI Low Capacity
Platform Scale**
3 lbf to 150 lbf
13.34 N to 667.2 N



SSB Sealed Beam
50 lbf to 10K lbf
222 N to 44.48 kN



SM S-Type
10 lbf to 1000 lbf
50 N to 5000 N



SSM/SSM2 Sealed S-Type
50 lbf to 5K lbf
200 N to 25 kN
Available with Fatigue Rated Options



ULC Ultra Low Capacity
0.11 lbf to 0.45 lbf
0.5 N to 2 N
Overload Protected



SMT Micro S-Type
5 lbf to 50 lbf
20 N to 200 N
Micro-sized 3/4" x 3/4" x 1/4"
1,000% Safe Overload



**SMT Overload
Protected S-Type**
1.1 lbf to 450 lbf
5 N to 2000 N
500% +1,000% FS Safe Overload

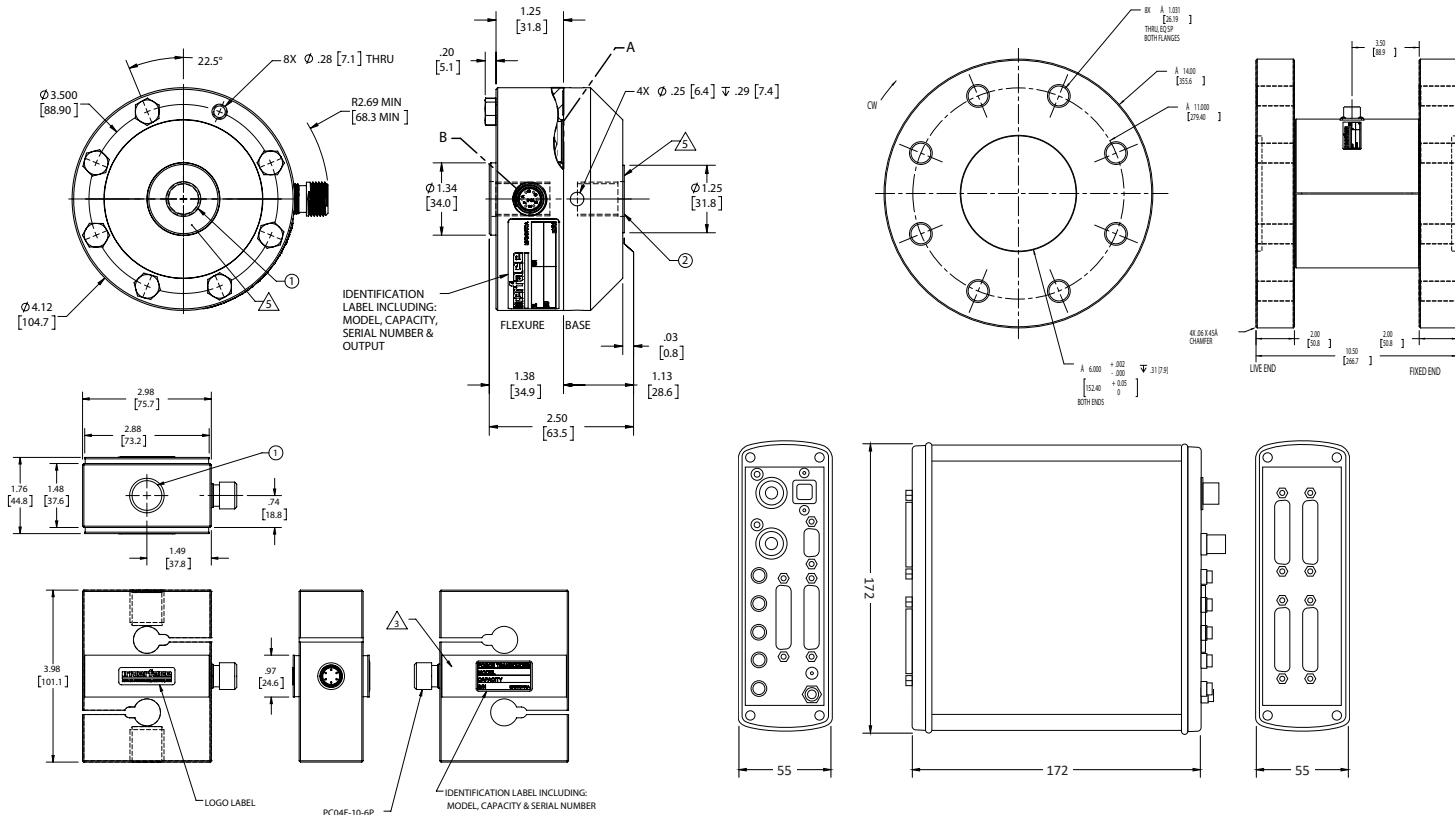
Interface is the world’s trusted leader in technology, design and manufacturing of force measurement solutions. Our clients include a “who’s who” of the aerospace, automotive and vehicle, medical device, energy, industrial manufacturing, test and measurement industries.

Interface engineers around the world are empowered to create high-level tools and solutions that deliver consistent, high quality performance. These products include load cells, torque transducers, multi-axis sensors, wireless telemetry, instrumentation and calibration equipment.

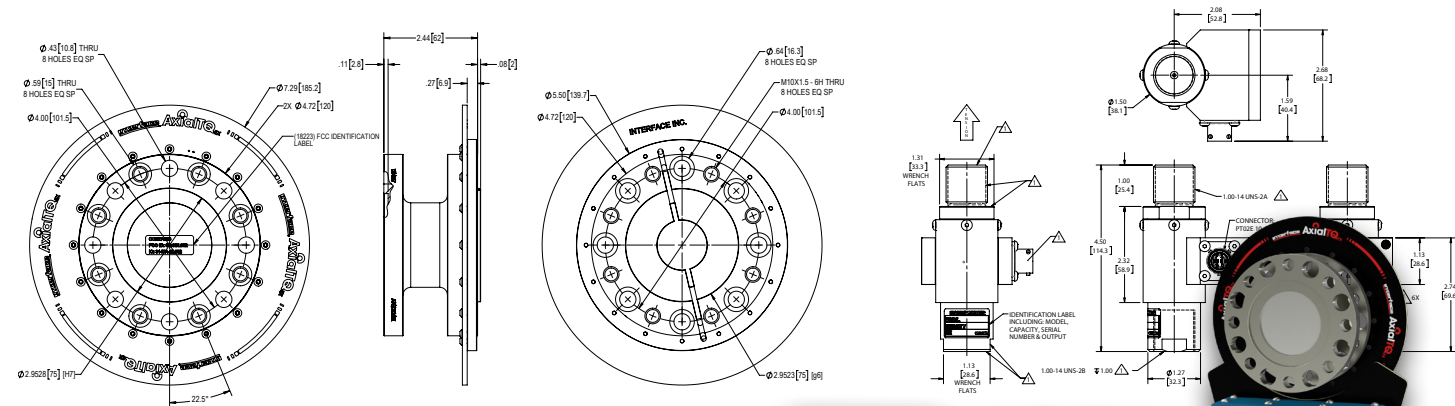
Interface, Inc., was founded in 1968 and is a US-based, woman-owned technology manufacturing company headquartered in Scottsdale, Arizona.

Interface

Summary Catalog



Summary Catalog v1.2 02-10-2021



Interface
FORCE MEASUREMENT SOLUTIONS.

7418 East Helm Drive, Scottsdale, AZ 85260 • 480.948.5555 • interfaceforce.com

Interface
FORCE MEASUREMENT SOLUTIONS.

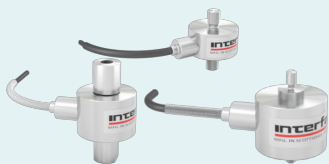
The World Leader in Force Measurement Solutions™



MINI LOAD CELLS CONTINUED



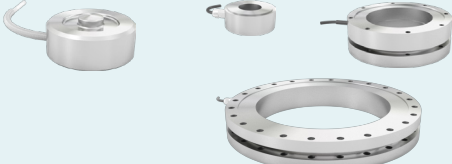
SML Low Height S-Type
5 lbf to 2000 lbf
22 N to 9 kN
5 lbf, 10 lbf, 5 N, and 45 N Models
Feature 10x Overload Protection



WMC/ WMCP/ WMCFP Sealed Stainless Steel
1.1 lbf to 10K lbf
500 gf to 45 kN
Overload Protected
Male Threads



ConvexBT/LBMU/LBM Load Buttons
5 lbf to 50K lbf
0.02 kN to 130 kN



LW/LWPF1/LWPF2 Load Washer
5 lbf to 135K lbf
0.02 kN to 600 kN

MULTI-AXIS SENSORS



3-Axis Force
Force: 4.5 lbf to 112K lbf
Force: 10 N to 500 kN



6-Axis Force Torque
Force: 11.2 to 22.5K lbf
Torque: 8.85 lbf-in to 88.5K lbf-in
Force: 50 N to 100K N
Torque: 1 Nm to 10K Nm

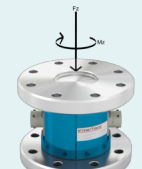


1216/1516/2816 Axial Torsion
Force: 100 to 15K lbf
Torque: 50 to 7.5K lbf-in
Force: 1.11 to 66.7 kN
Torque: 5.6 to 847 Nm
Fz, Mz



5200 XYZ Force and Moment
Force: 1K to 50K lbf
Moment: 400 to 20K lbf-in
Force: 4.45 to 222 kN
Moment: 45.2 to 2.26K Nm
Fz, Mx, My

OTHER LOAD CELLS



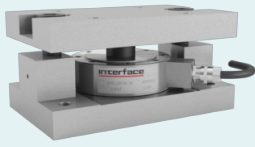
5600 2-Axis Axial Torsion
Force: 6K to 180K lbf
Torque: 5K to 300 lbf-in
Force: 27 to 800 kN
Torque: 560 to 33K Nm
Fz, Mz



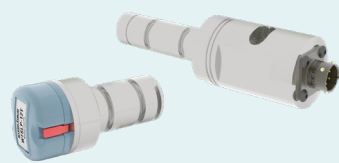
2000/2160/2200/2300 Column and Canister Load Cells
50K lbf to 1M lbf
630 kN to 4450 kN



REC Rod End
1K lbf to 50K lbf
5 kN to 220 kN



A4600/A4600 Tank Weighing Stainless Steel
2.5 lbf to 50K lbf
11.1 kN to 222 kN



LP/WTSLP Load Pins
Up to 3,000K lbf
Up to 13.3 kN
Custom Designs Available with Amplification, Submersible, Wireless, and ATEX Options



ITL/WTSTL Tension Links
11K lbf to 220.4K lbf
5 mt to 100 mt
Custom Designs Available with Amplification, Submersible, Wireless, and ATEX Options



ISHK/WTSSHK Load Shackles
2.2K lbf to 2,205K lbf
1 mt to 1K mt
Available with Amplification, Submersible, Wireless, and ATEX Options



3410/3420/3416/3430 Intrinsically Safe Load Cells
750 to 60K lbf
3.37 kN to 267 kN



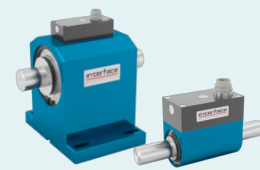
ROTARY TORQUE TRANSDUCERS



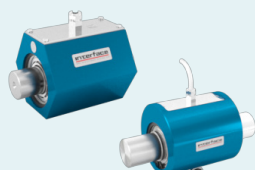
T2/T4 Ultra and Standard Precision
0.88 lbf-in to 177K lbf-in
0.1 Nm to 20K Nm



T3/T5 Ultra and Standard Precision Pedestal Mount
0.88 lbf-in to 177K lbf-in
0.1 Nm to 20K Nm



T6/T7 Dual Range
44.3/4.43 lbf-in to 4.43K lbf-in to 443K lbf-in
5/0.5 Nm to 500/50 Nm



T8/T23 General Purpose
1.77 lbf-in to 4.43K lbf-in
0.2 Nm to 500 Nm

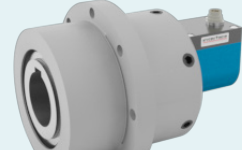
ROTARY TORQUE CONTINUED TRANSDUCERS



T25 High Speed
0.885 lbf-in to 44.3K lbf-in
0.1 Nm to 5K Nm



T12/T15 Square Drive
0.88 lbf-in to 177K lbf-in
0.1 Nm to 5K Nm



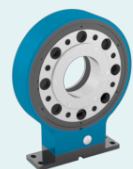
T22 Pulley Belt
177 lbf-in to 44K lbf-in
20 Nm to 5K Nm
High Raidal



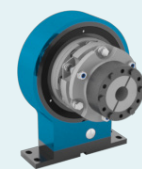
T31, T32, T33, & T34 Spindle Torque
8.85 lbf-in to 4.43K lbf-in
1 Nm to 500 Nm
Speeds Up to 2K RPM Integrated Speed/Angle Measurement



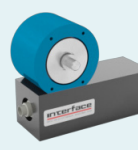
AxialTQ[®] Rotary Torque
885 lbf-in to 88.5K lbf-in
100 Nm to 10K Nm



T27 Hollow Flange Bearingless
443 lbf-in to 8.85K lbf-in
50 Nm to 1K Nm



T1 Torque Coupling
400 lbf-in to 9K lbf-in
50 Nm to 1K Nm
Bearingless



T11 Bearingless
0.04 lbf-in to 1.327K lbf-in
0.005 Nm to 150 Nm

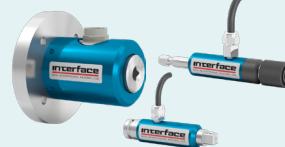
REACTION TORQUE TRANSDUCERS



TS11 Flange Style
88.5 lbf-in to 177K lbf-in
10 Nm to 20K Nm



TS12 Shaft Style
0.04 lbf-in to 177K lbf-in
0.005 Nm to 20K Nm



TS14/TS15/TS17 Square and Hex Drive
1.77 lbf-in to 17.7K lbf-in
0.2 Nm to 5K Nm



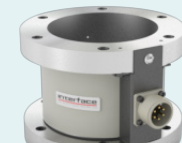
TSQ High Capacity Square Drive
300K lbf-in to 3,000K lbf-in
34K Nm to 340K Nm



MRT/MRTP Miniature Reaction Torque Series
1.77 lbf-in to 177 lbf-in
0.2 Nm to 2 Nm
7x Overload Protected



MRT2/MRT2P Miniature Reaction Torque Series
1.77 lbf-in to 443 lbf-in
0.2 Nm to 50 Nm
3x Overload Protected



5330 Hollow Flange
60 lbf-in to 100K lbf-in
6.8 Nm to 11.3K Nm



5400 Series Flange Style
1K lbf-in to 500K lbf-in
110 Nm to 55K Nm

INSTRUMENTATIONS



WTS Wireless Telemetry System



BTS Bluetooth Telemetry System
Bluetooth Strain Gage Transmitter



BX8 Data Acquisition and Amplifier System
8 Channel



BSC4 Multi-Channel Bridge Amplifier and PC Interface Module
4 Channel

INSTRUMENTATIONS CONTINUED



INF-USB2/SI-USB PC Input Module
Single and Dual Channel
mV/V, VDC, or mA Input



9330 High Speed Portable Display and Data Logger
3750Hz Peak Capture



9890 Strain Gage, Load Cell, and mV/V Indicator
mV/V Input Indicator



9894 Analog Input Process Indicator
Analog Input Process Indicator



9860 High Speed Digital Indicator
Fast Analog Output



9320 Handheld Indicator



480 Bidirectional Weight Indicator



9840 Intelligent Calibration Grade Digital Indicator
Stores Multiple Calibrations



SGA AC/DC Powered Signal Conditioner with Selectable Outputs and Filtering



VSC 10-28 VDC Powered Signal Conditioner

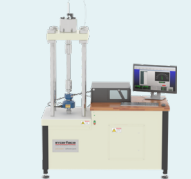


DMA2/ISG DIN Rail Mount Signal Conditioner



CSC/ICSC Environmentally Sealed OEM Inline Signal Conditioner
Analog or Digital Output

CALIBRATION



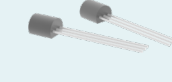
GS-SYS Gold Standard[®] Calibration System Load Frame
Capacities up to 100K lbf



GS-SYS03/04 Gold Standard[®] Portable Calibration System
Reduces Calibration Time 50-90%
Automatic Calibration and Archiving
Custom Report Writer



CX Series Precision mV/V Transfer Standard
Precision mV/V Output
Analog or Digital Output



TEDS Transducer Electronic Data Sheet

- Meets IEEE 1451.4 Standards for Smart Transducer Interface
- Plug & Play Ready
- Cuts Instrument Setup Time

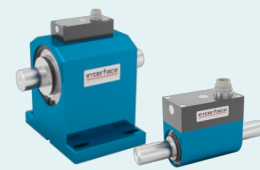
ROTARY TORQUE TRANSDUCERS



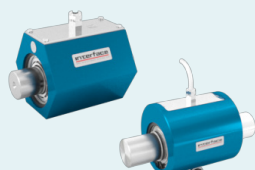
T2/T4 Ultra and Standard Precision
0.88 lbf-in to 177K lbf-in
0.1 Nm to 20K Nm



T3/T5 Ultra and Standard Precision Pedestal Mount
0.88 lbf-in to 177K lbf-in
0.1 Nm to 20K Nm



T6/T7 Dual Range
44.3/4.43 lbf-in to 4.43K lbf-in to 443K lbf-in
5/0.5 Nm to 500/50 Nm



T8/T23 General Purpose
1.77 lbf-in to 4.43K lbf-in
0.2 Nm to 500 Nm

Calibration and Repair Services

- NIST Traceability
- ISO 17025 Accredited
- ASTM E74 Calibration
- ANSI/NCSL Z540
- MIL-STD-45662A
- ISO 376

Accreditations

Interface is A2LA accredited (#1991.01) to perform the most accurate universal calibrations on all Interface and competitive force and torque transducers in 5 days



TEDS - Plug & Play Ready



USB Option Available



Software Available

Interface force measurement products are available in many design configurations for project designs requiring the highest performance.

To learn more about the Interface products or force measurement solutions call 480-948-5555.
www.interfaceforce.com