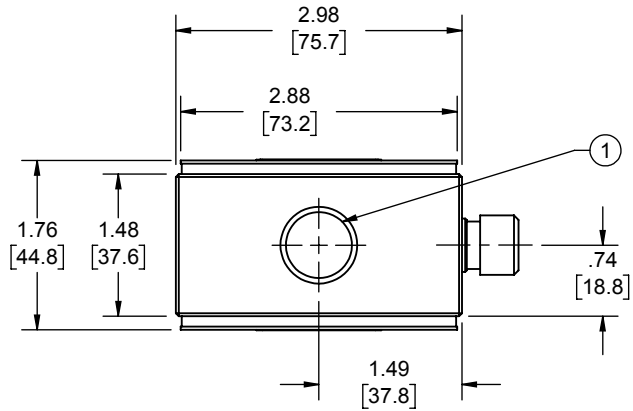


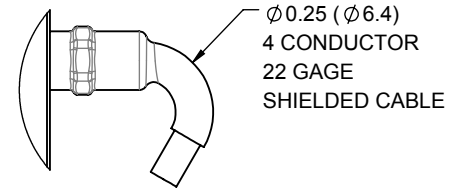
LOAD CELL CHARACTERISTICS			
#	CAPACITY	US CAPACITIES	S.I. CAPACITIES
		5000, 10K (lbf)	25, 50 (kN)
①	FLEXURE THREAD (BOTH ENDS)	.75-16 UNF-2B $\nabla$ .75	M20 X 1.5-6H $\nabla$ (18.5)

Interface Inc. claims proprietary rights in the information disclosed herein. This drawing is furnished in confidence on the express understanding that neither it nor any reproduction thereof will be disclosed to others or used for the purpose of manufacture or procurement of the article or part shown herein without written permission of Interface Inc. The drawing shall remain the property of Interface Inc. and shall be returned upon request by Interface Inc.

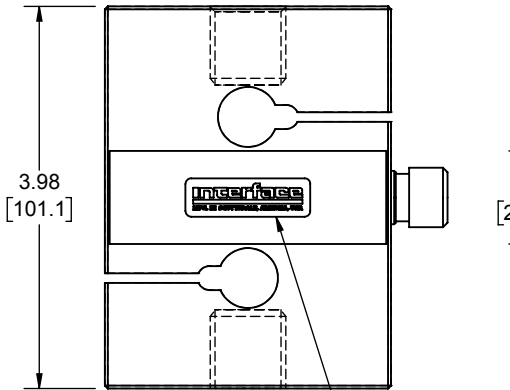
81222			
REVISIONS			
REV.	DESCRIPTION	DATE	APPROVED
A	INITIAL RELEASE	01/14/13	
B	ADDED TABLE FOR METRIC MODELS	11/14/13	<i>Ma</i>
C	UPDATED TO CURRENT STANDARDS	3/30/2017	BB



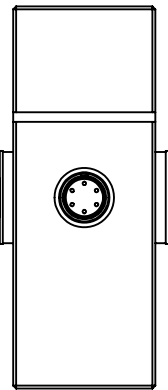
### INTEGRAL CABLE MODELS $\triangle$ 2



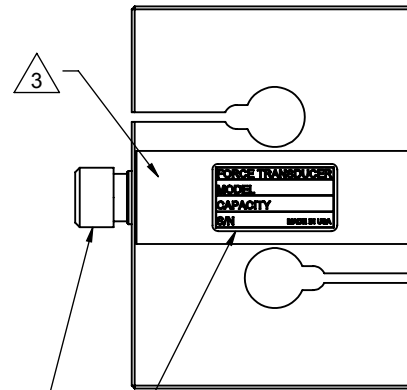
CABLE CONNECTION	
COLOR	FUNCTION
RED	+ EXCITATION
GREEN	+ SIGNAL
WHITE	- SIGNAL
BLACK	- EXCITATION
SHIELD	N / C
TENSION UPSCALE	



LOGO LABEL

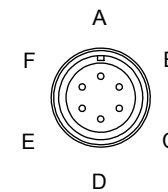


PC04E-10-6P



IDENTIFICATION LABEL INCLUDING:  
MODEL, CAPACITY & SERIAL NUMBER

### CONNECTOR MODELS



CONNECTOR PINOUT	
PIN	FUNCTION
A	+ EXCITATION
B	+ SIGNAL
C	- SIGNAL
D	- EXCITATION
E	N / C
F	N / C
TENSION UPSCALE	

$\triangle$  3 COVER COLOR: BLUE.

$\triangle$  2 STANDARD CABLE LENGTH: 10 FEET (3 METERS).  
NON-STANDARD CABLE LENGTH PER OPTION CODE.

1. FLEXURE MATERIAL: STEEL, NICKEL PLATED.

UNLESS OTHERWISE SPECIFIED DIMENSIONS ARE IN INCHES [mm]	
TOLERANCES ARE:	
ANGLES	$\pm 0^{\circ} 30'$
.XX	$\pm .01$ [0.25]
.XXX	$\pm .005$ [0.13]
CREATOR	DATE
DESIGNED: LARRY B.	01/07/2013
DETAILED: J.A.S.	01/07/2013
WEIGHT: (APPROX) 4.5 (lbs)	

<b>interface</b>	
ADVANCED FORCE MEASUREMENT	
7401 E. BUTHERUS DR. SCOTTSDALE, AZ USA 85260	
TITLE: <b>OUTLINE, MODEL SSM2</b>	
SIZE: A	DWG. NO: 81222
SCALE: 1:2	SHEET 1 OF 1
REV: C	