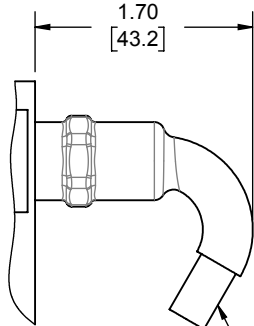


LOAD CELL CHARACTERISTICS

#	CAPACITY	US CAPACITIES		SI CAPACITIES	
		750, 1K (lbf)	2K, 3K (lbf)	2.5kN, 3kN, 5kN	10kN
1	FLEXURE MATERIAL	②	③	②	③
2	FLEXURE THREAD, TYP	.500-20 UNF-2B		M12 X 1.75-6H	
3	FLEXURE LENGTH	2.00	1.98	2.00	1.98
4	FLEXURE WIDTH	1.00	0.98	1.00	0.98
5	O/L WIDTH	1.25	1.23	1.25	1.23
6	FLEXURE HEIGHT	3.00	2.98	3.00	2.98
	WEIGHT (lbs)	0.50	1.30	0.50	1.30

Interface Inc. claims proprietary rights in the information disclosed herein. This drawing is furnished in confidence on the express understanding that neither it nor any reproduction thereof will be disclosed to others or used for the purpose of manufacture or procurement of the article or part shown herein without written permission of Interface Inc. The drawing shall remain the property of Interface Inc. and shall be returned upon request by Interface Inc.

REVISIONS			
REV.	DESCRIPTION	DATE	APPROVED
	INITIAL RELEASE	01/02/96	
A	REDRAWN, UPDATED TO CURRENT STANDARDS, 1.19 [30.1] WAS 1.25 [31.8]	05/24/16	DLC
B	ADDED LINES 3 - 6 & WEIGHT TO TABLE	7/26/2019	RMP



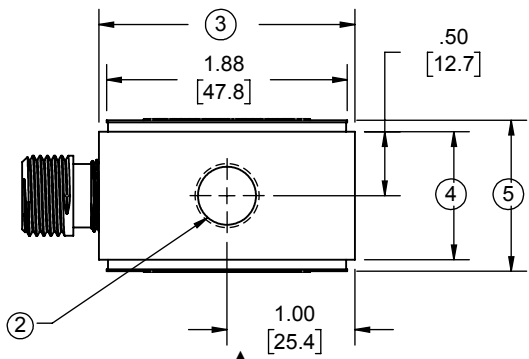
OPTIONAL

.25 [6.4] O.D. 4 CONDUCTOR
22 GAGE SHIELDED CABLE

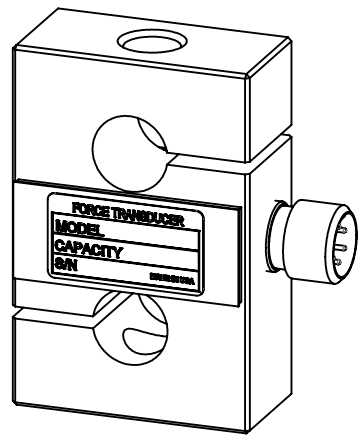
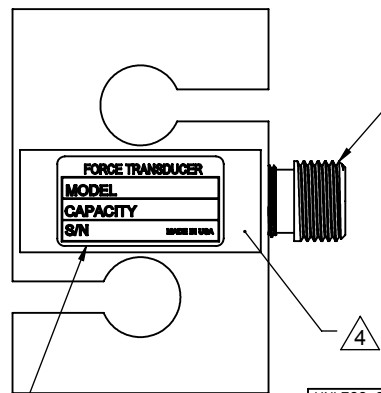
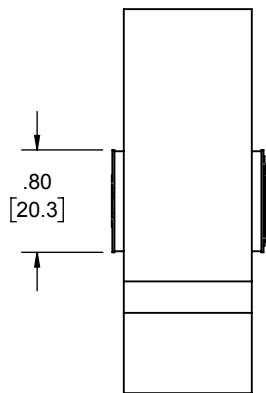
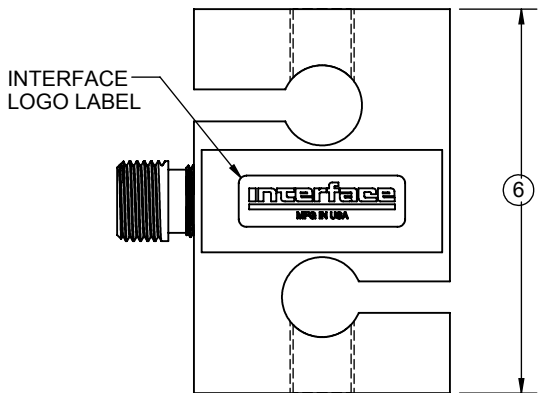
CONNECTOR PINOUT	
PIN	FUNCTION
A	+ EXCITATION
B	+ SIGNAL
C	- SIGNAL
D	- EXCITATION
E	N/C
F	N/C

CABLE CONNECTIONS	
COLOR	FUNCTION
RED	+ EXCITATION
GREEN	+ SIGNAL
WHITE	- SIGNAL
BLACK	- EXCITATION
SHIELD	N/C

ALL READ UPSCALE IN TENSION
AND DOWNSCALE IN COMPRESSION



**TENSION LOAD
PRIMARY AXIS**



- ④ COVER COLOR: BLUE.
- ③ MATERIAL: NICKEL PLATED STEEL.
- ② MATERIAL: ANODIZED ALUMINUM.
- ① STANDARD CABLE LENGTH IS 10 FT [3M]
NON-STANDARD CABLE LENGTH PER OPTION CODE.

IDENTIFICATION LABEL INCLUDING:
MODEL, CAPACITY & SERIAL NUMBER

UNLESS OTHERWISE SPECIFIED
DIMENSIONS ARE IN INCHES [mm]
TOLERANCES ARE:
ANGLES ± 0° 30'
.XX ± .01 [0.25]
.XXX ± .005 [0.13]

CREATOR	DATE
DESIGNED:	
DETAILED: PER	1/2/1996
WEIGHT: (APPROX)	0.49 (lbs)

Interface 7418 E. HELM DRIVE
FORCE MEASUREMENT SOLUTIONS, SCOTTSDALE, AZ 85260 USA

TITLE:
OUTLINE MODELS: SSM-750 THRU 3K, 5KN THRU 10KN

SIZE: A	DWG. NO: 80032	REV: B
SCALE: 2:3	SHEET 1 OF 1	