

LOAD CELL CHARACTERISTICS

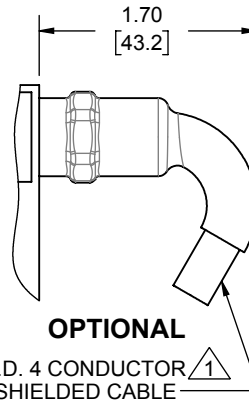
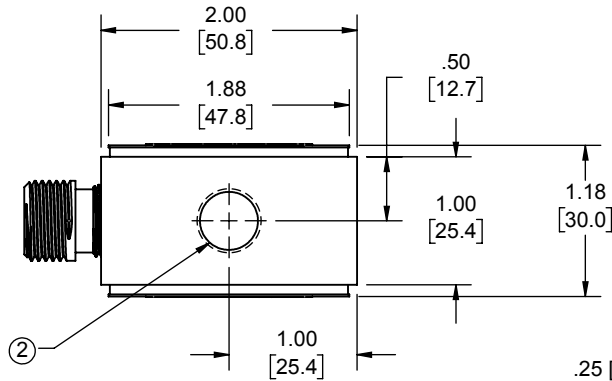
#	CAPACITY	US CAPACITIES	SI CAPACITIES
		500 (lbf)	2000 N
2	FLEXURE THREAD, TYP	.500-20 UNF-2B	M12 X 1.75-6H

Interface Inc. claims proprietary rights in the information disclosed herein. This drawing is furnished in confidence on the express understanding that neither it nor any reproduction thereof will be disclosed to others or used for the purpose of manufacture or procurement of the article or part shown hereon without written permission of Interface Inc. The drawing shall remain the property of Interface Inc. and shall be returned upon request by Interface Inc.

80045

REVISIONS

REV.	DESCRIPTION	DATE	APPROVED
A	CHANGED METRIC CONVERSION 13.5 TO 12.7	01/26/98	
B	REDRAWN, UPDATED TO CURRENT STANDARDS	05/24/16	DLC
C	ADDED TEDS PINOUT	09/07/2018	RMP



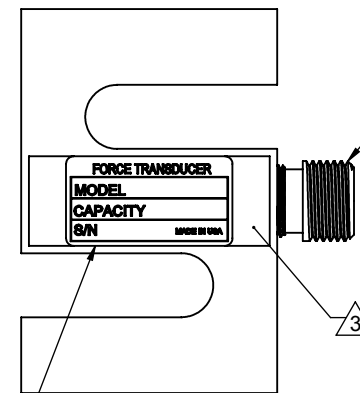
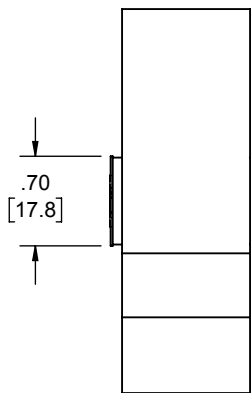
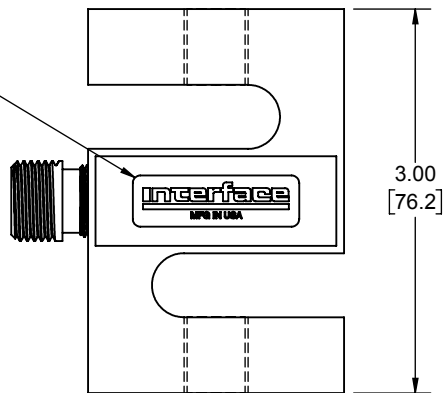
CONNECTOR PINOUT		
PIN	W/O TEDS	WITH TEDS
A	+ EXCITATION	+ EXCITATION
B	+ SIGNAL	+ SIGNAL
C	- SIGNAL	- SIGNAL
D	- EXCITATION	- EXCITATION
E	N/C	TEDS DATA
F	N/C	TEDS GROUND

CABLE CONNECTIONS	
COLOR	FUNCTION
RED	+ EXCITATION
GREEN	+ SIGNAL
WHITE	- SIGNAL
BLACK	- EXCITATION
SHIELD	N/C

TENSION UPSCALE

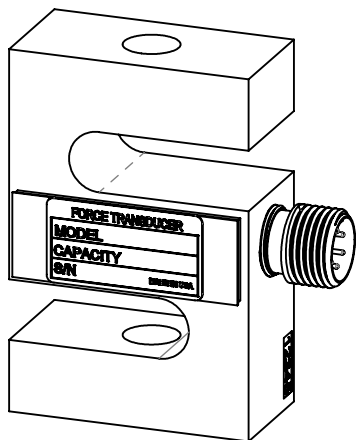
ALL READ UPSCALE IN TENSION AND DOWNSCALE IN COMPRESSION

INTERFACE LOGO LABEL



IDENTIFICATION LABEL INCLUDING: MODEL, CAPACITY & SERIAL NUMBER

- 4. MODELS WITH TEDS CHIP INSTALLED HAVE A "T" AT THE END OF THE MODEL NUMBER (SSM-AF-500-T)
- 3 COVER COLOR: BLUE.
- 2. MATERIAL: ANODIZED ALUMINUM.
- 1 STANDARD CABLE LENGTH IS 10 FT [3M] NON-STANDARD CABLE LENGTH PER OPTION CODE.



UNLESS OTHERWISE SPECIFIED DIMENSIONS ARE IN INCHES [mm]
TOLERANCES ARE:
ANGLES ± 0° 30'
.XX ± .01 [0.25]
.XXX ± .005 [0.13]

CREATOR	DATE
DESIGNED:	
DETAILED: PER	1/2/1996
WEIGHT: (APPROX)	0.43 (lbs)

Interface
FORCE MEASUREMENT SOLUTIONS. 7418 E. HELM DRIVE SCOTTSDALE, AZ 85260 USA

TITLE:
**OUTLINE MODELS:
SSM-500 & 2000N**

SIZE: A	DWG. NO: 80045	REV: C
SCALE: 2:3	SHEET 1 OF 1	