

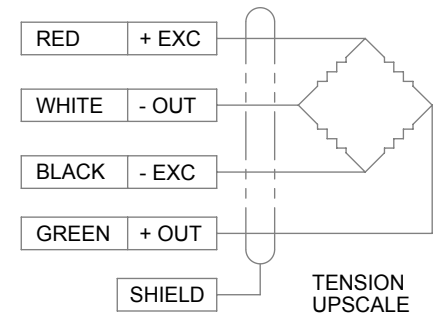
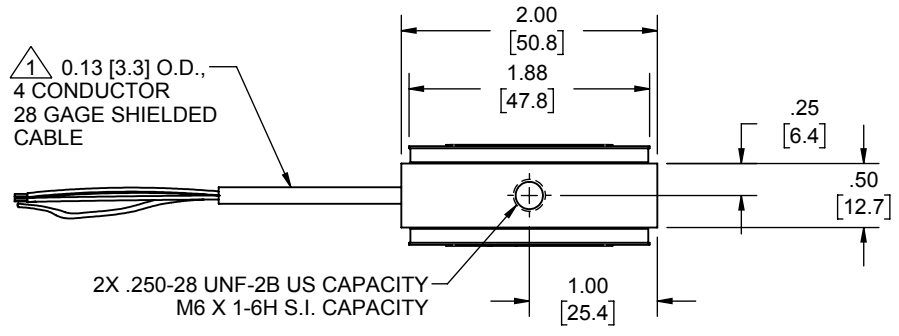
LOAD CELL CHARACTERISTICS

US & S.I. CAPACITIES

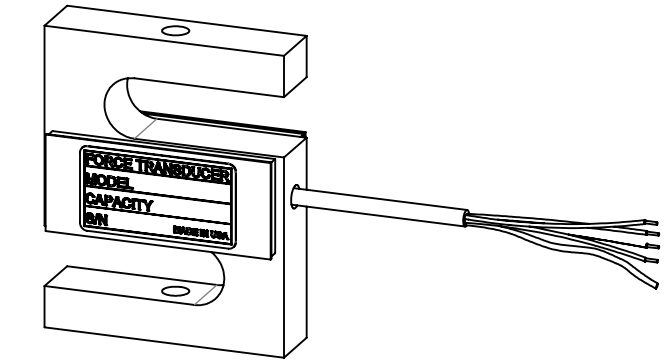
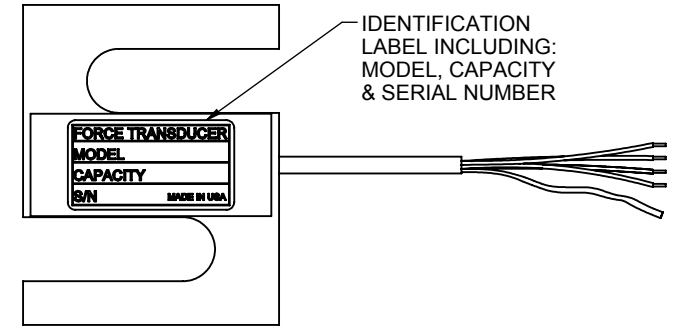
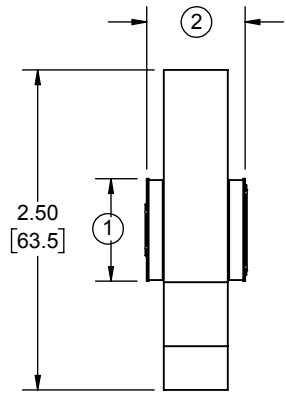
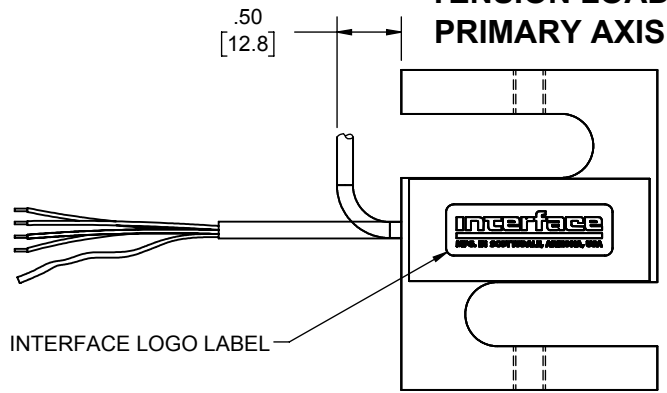
#	CAPACITY	25, 50 (lbf) 100N & 200N	100, 125, 150 (lbf) 250N, 500N & 700N	250 (lbf) 1000N
1	COVER HEIGHT	0.80 [20.3]	0.70 [17.8]	0.80 [20.3]
2	OVERALL WIDTH	0.80 [20.3]	0.68 [17.2]	

Interface Inc. claims proprietary rights in the information disclosed herein. This drawing is furnished in confidence on the express understanding that neither it nor any reproduction thereof will be disclosed to others or used for the purpose of manufacture or procurement of the article or part shown hereon without written permission of Interface Inc. The drawing shall remain the property of Interface Inc. and shall be returned upon request by Interface Inc.

REVISIONS			
REV.	DESCRIPTION	DATE	APPROVED
A	REDRAWN, UPDATED TO CURRENT STANDARDS, 0.68 [17.2] WAS 0.76 [19.3], ADDED ADDITIONAL CAPACITIES	05/23/16	DLC
B	ADDED 700N CAPACITY	2/21/2017	BB



**TENSION LOAD
PRIMARY AXIS**



① STANDARD CABLE LENGTH IS 10 FT [3M]
NON-STANDARD CABLE LENGTH PER OPTION CODE.

UNLESS OTHERWISE SPECIFIED DIMENSIONS ARE IN INCHES [mm]	
TOLERANCES ARE:	
ANGLES ± 0° 30'	
.XX	± .01 [0.25]
.XXX	± .005 [0.13]
CREATOR:	DATE
DESIGNED:	
DETAILED:	01/02/1996
PER	
WEIGHT: (APPROX)	0.19 (lbs)

interface
ADVANCED FORCE MEASUREMENT
7401 E. BUTHRUS DR. SCOTTSDALE, AZ USA 85260

TITLE:
OUTLINE MODELS: SSM
-25 THRU -250, -100N THRU -1000N

SIZE: DWG. NO: **80031**

SCALE: 2:3

SHEET 1 OF 1

REV: **B**