

INF-USB2 Driver and Software Quick Start Guide

Please follow these instructions carefully. Do not connect the INF-USB2 module to your computer until instructed to do so. The software comes as two parts, the USB drivers and the INF-USB2.exe program file. You must install the drivers following the steps below before running INF-USB2.exe.

During installation, Windows will find two new pieces of hardware.

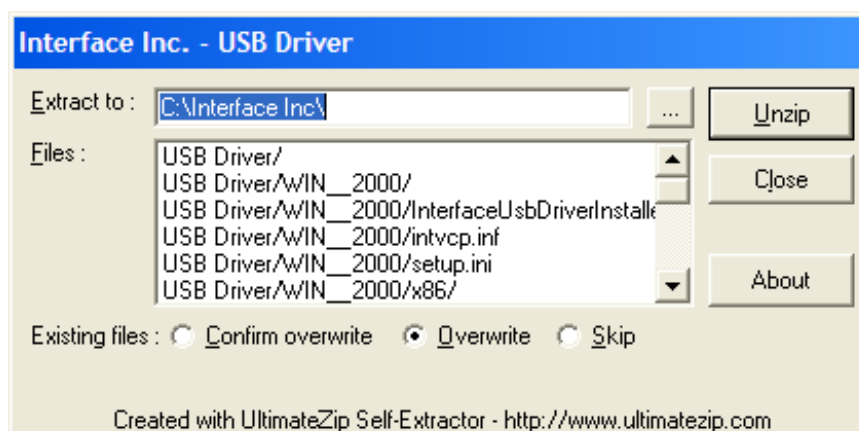
- a. Interface USB sensor Interface Device
- b. Interface USB sensor Interface Port

Windows must be allowed to install drivers for both items.

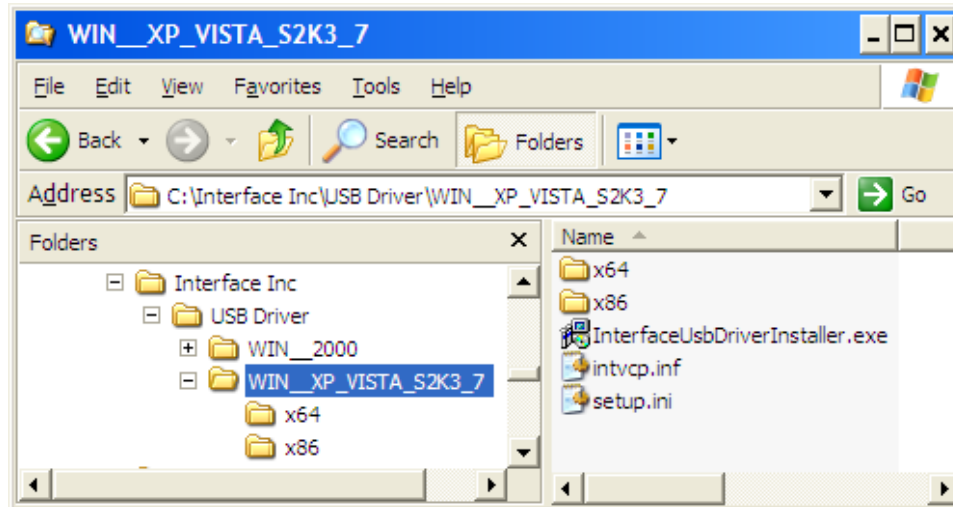
After the hardware is successfully installed, the INF-USB2.exe program can be run. This is the actual program file and can be run from wherever it is saved. It can be copied to your desktop for convenience

Driver Installation Procedure

1. Download the file inf-usb2.zip from www.interfaceforce.com/inf-usb2
2. Unzip the contents of inf-usb2.zip to a folder on your hard drive
3. Run USB Driver.exe. Click the Unzip button to extract the USB driver files. A folder will be created called Interface Inc.



4. Navigate to C:\Interface Inc\USB Driver\WIN_XP_VISTA_S2K3_7 and run InterfaceUsbDriverInstaller.exe



5. Connect INF-USB2 module to an available USB port on PC.
6. Windows will find new hardware called Interface USB sensor Interface Device. Select “Install the software automatically” and click Next.
7. You may get a warning that the software has not passed Windows Logo Testing. If so, Continue Anyway.
8. Once the installation is complete, click Finish.
9. Windows will then find the second new piece of hardware, Interface USB Sensor Interface Port. Select “Install the software automatically” and click Next. Again, if you get a warning about Windows Logo Testing, just click Continue Anyway.
10. Driver installation is now complete.

Running the software

The INF-USB2.exe program file can be run from the original download file or can be copied to your desktop for convenience. When run, the software opens and searches for a connected INF-USB2 device.

Software Quick Start

1. Software Layout

Navigation Bar
Used for configuring software and saving data. If at any time the Navigation disappears, it can be re-instated in the View menu.

The screenshot displays the INY-USB-VS2 software interface. On the left is the **Navigation Bar** with a tree view containing categories like File, Operating Mode, Adjust. Mode, View, Language, and Help. The main window is titled "Meas./Diagram Mode" and contains several control buttons: "Measure Start", "Measure Stop", "Trigger switch on" (with a radio button and "Trigger auto rep" checkbox), "Single Measurement", and "Control" (with a radio button). Below these buttons, it shows "Sampling rate: 50/sec", "Serial number: 10001043", "Upper range value (A): 5G", and "Uncertainty of measurement: n.a.". On the right, the **Display Area** shows a large digital readout of "0.317 lbf" and three smaller readouts for "TARE", "MIN Reset", and "MAX Reset". At the bottom, the **Diagram Area** features a graph of "Channel A [lbf]" vs "Time [sec]" with a blue line showing a rising curve, a peak, a sharp drop, and a second peak. A status bar at the bottom left reads "Ready for use. Sensor connected" and the bottom right shows "Wed 11/10/2010 02:51 PM".

Measuring Control Area
Used for starting and stopping the measurement. Configuration changes can only be made in "Stopped" mode. Clicking the "Control" box engages the installed shunt resistor.

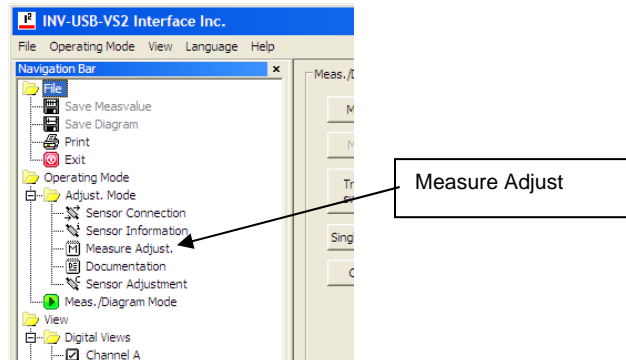
Display Area
Current, Min and Max data, Min and Max Reset, and Tare. Data is "LIVE" only after "Measure Start" button has been clicked

Diagram Area
Visualization of data. Diagram auto scales to fit data range.

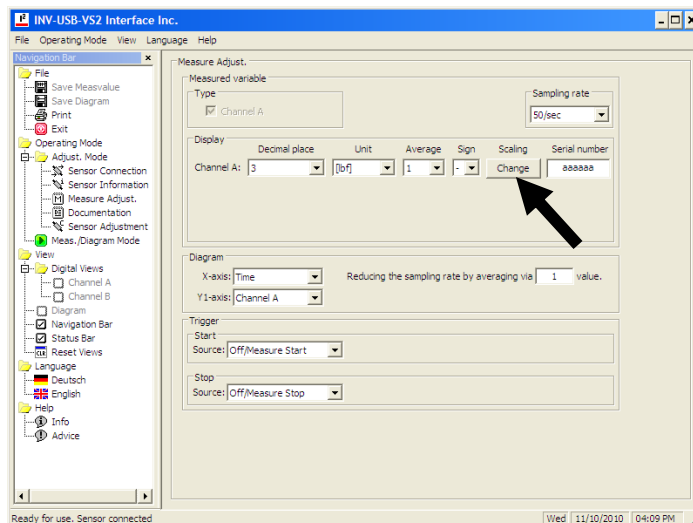
2. Configuring the Software

If the INF-USB Module and Transducer were purchased as a set, the software will automatically recognize the sensor and display in engineering units such as lbf, N, NM or lb-in. Otherwise, the display will read in units of sensor output, such as mV/V or V.

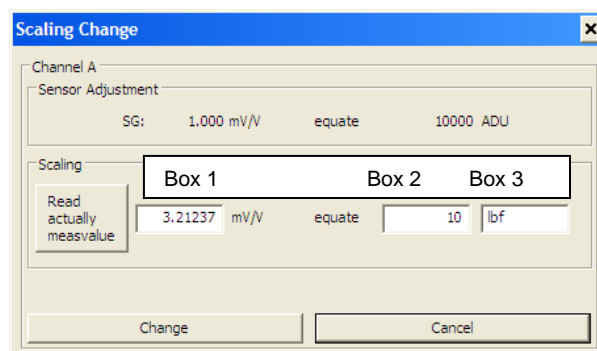
To change the units of measure, click on Measure Adjust folder in the Adjust Mode folder



First click on the box under Scaling.



A Scaling Change dialog box will appear containing 3 input boxes.



Now enter the Sensor Output in the first box, the Sensor Capacity in the second box, and the Unit of Measure in the 3rd box. For example, if you have a 10 lbf capacity load cell with 3.21237 mV/V output you would enter the following values:

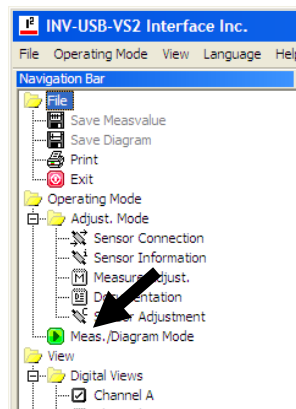
1. 3.21237
2. 10
3. lbf

In this example you could also configure the software to display in N by entering

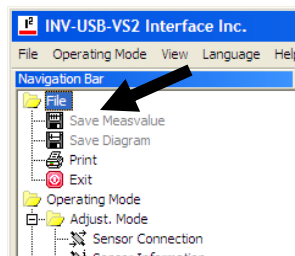
1. 3.21237
2. 44.4822
3. N

After entering the values, click Change to save. The scaling is stored in non-volatile memory on the INF-USB module.

To return to Measuring Mode, click on Meas./Diagram Mode in the Navigation Bar.



To start a measuring cycle, click Measure Start. After the measurement is complete, click Measure Stop. You can then save the data to a .csv file by selecting Save Measvalue in the File folder. The Diagram can also be saved as a .jpg file by clicking Save Diagram.



For further detail, please refer to the full INF-USB2 Software Manual available at www.interfaceforce.com