

A black and white photograph of industrial force measurement equipment. The image shows several large, vertical, cylindrical metal components, likely part of a testing machine. A central component is in sharp focus, showing a flange and a sensor unit with a cable attached. The background is a blurred view of similar equipment, creating a sense of depth. The overall tone is technical and professional.

# **Interface**

**FORCE MEASUREMENT SOLUTIONS™**

## **RECALIBRATION & REPAIR**





**95,000+ CALIBRATIONS PERFORMED ANNUALLY**

## WHY CHOOSE INTERFACE?

### CALIBRATION EXPERTS

- ISO 17025 Accredited
- Nearly 50 Years of Calibration Experience
- Calibration of All Manufacturers Load Cells
- 95,000+ Calibrations Performed Annually
- Custom Calibrations to Meet your Needs
- Permanent Archive of Test Data
- NIST Certified Gold and Platinum Standard Reference Load Cells
- Interface Gold Standard Calibration Software Used for Data Collection & Analysis
- Full Service Machine Shop for any Mechanical Requirements

### FORCE

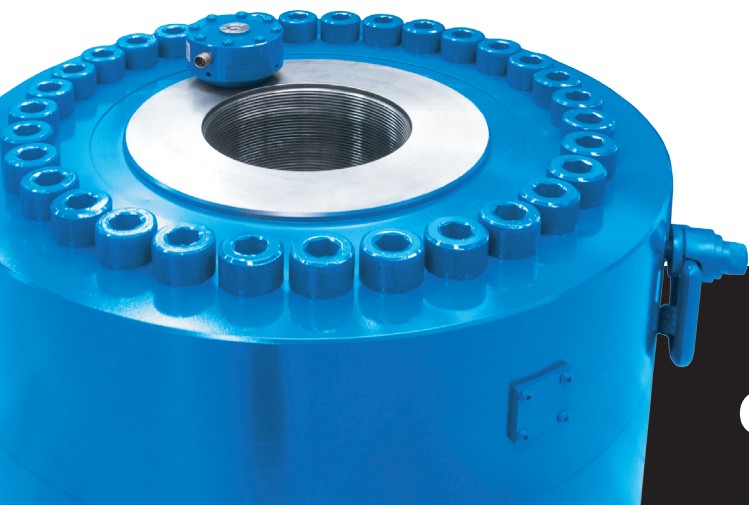
- NMI Traceable Calibration
- 50g – 1 Million lbf Capacities
- (9) Hydraulic & (5) Deadweight Test Stands to Support Your Calibration Requirements

### TORQUE

- .022 – 100K in-lbf Capacities
- NIST Traceable to 2.2K in-lbf
- NMI Traceable 2.2K – 100K in-lbf

### CUSTOMER SERVICE

- Highly Trained & Dedicated Professionals
- Quick and Timely Response
- Expedited 2-3 Business Day Service Available



American Association for Laboratory Accreditation

#### Accredited Laboratory

A2LA has accredited

**INTERFACE, INC.**

Scottsdale, AZ

for technical competence in the field of

**Calibration**

This laboratory is accredited in accordance with the recognized International Standard ISO/IEC 17025:2005 General requirements for the competence of testing and calibration laboratories. This laboratory also meets the requirements of ANSI/NCSL Z540-1-1994 and any additional program requirements in the field of calibration. This accreditation demonstrates technical competence for a defined scope and the operation of a laboratory quality management system (refer to joint ISO-ILAC-IAF Communiqué dated 8 January 2009).

Presented this 31<sup>st</sup> day of October 2014.



*Pete Maye*  
President & CEO  
For the Accreditation Council  
Certificate Number 1991.01  
Valid to November 30, 2016

For the calibrations to which this accreditation applies, please refer to the laboratory's Calibration Scope of Accreditation.

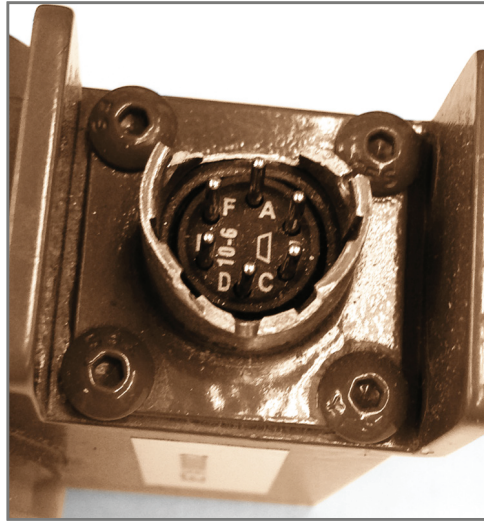
**50g – 1,000,000 lbf  
CALIBRATION CAPACITY**



# REPAIR SERVICES

- Comprehensive repair services for Interface load and torque sensors
- Basic repair services for industry standard load and torque sensors.
- Dependable 7–10 Day or Less Turn Around Including Calibration
- Connector Replacement for Any Manufacturers Load Cell \*
- Complimentary Load Cell Evaluations

\* Subject to Connector Availability



## HIGHLY TRAINED & EXPERIENCED REPAIR TECHNICIANS





# RECALIBRATION SERVICES

FORCE		Standard	ANSI Z-540 MIL-STD-4562A	ASTM E74	ISO 376
Services Offered	Tension & Compression	✓	✓	✓	✓
	Dual Bridge	✓	✓	✓	✓
	System Calibrations	✓	✓	✓	✓
	Extra/Custom Points Available	✓	✓	✓	✓
	Interface NMI Traceable Cal Cert	✓	✓	✓	✓
	A2LA / ISO 17025 Accredited		✓	✓	✓
	Lower Load Limits			✓	
	Coefficients			✓	✓
	Curved Fit & Graph Polynomials			✓	
	ISO 376 Class 0.5 – 0 - 500 LBF				✓
	ISO 376 Class 1 – >500 LBF				✓

TORQUE		Standard	ANSI Z-540 MIL-STD-4562A	ASTM E2428
Services Offered	Clockwise & Counter-Clockwise	✓	✓	✓
	Dual Bridge	✓	✓	✓
	System Calibrations	✓	✓	✓
	Extra Points	✓	✓	✓
	Interface Traceable Cal Cert	✓	✓	✓
	A2LA / ISO 17025 Accredited		✓	✓
	Lower Load Limits			✓
	Coefficients			✓
	Curved Fit & Graph Polynomials			✓

