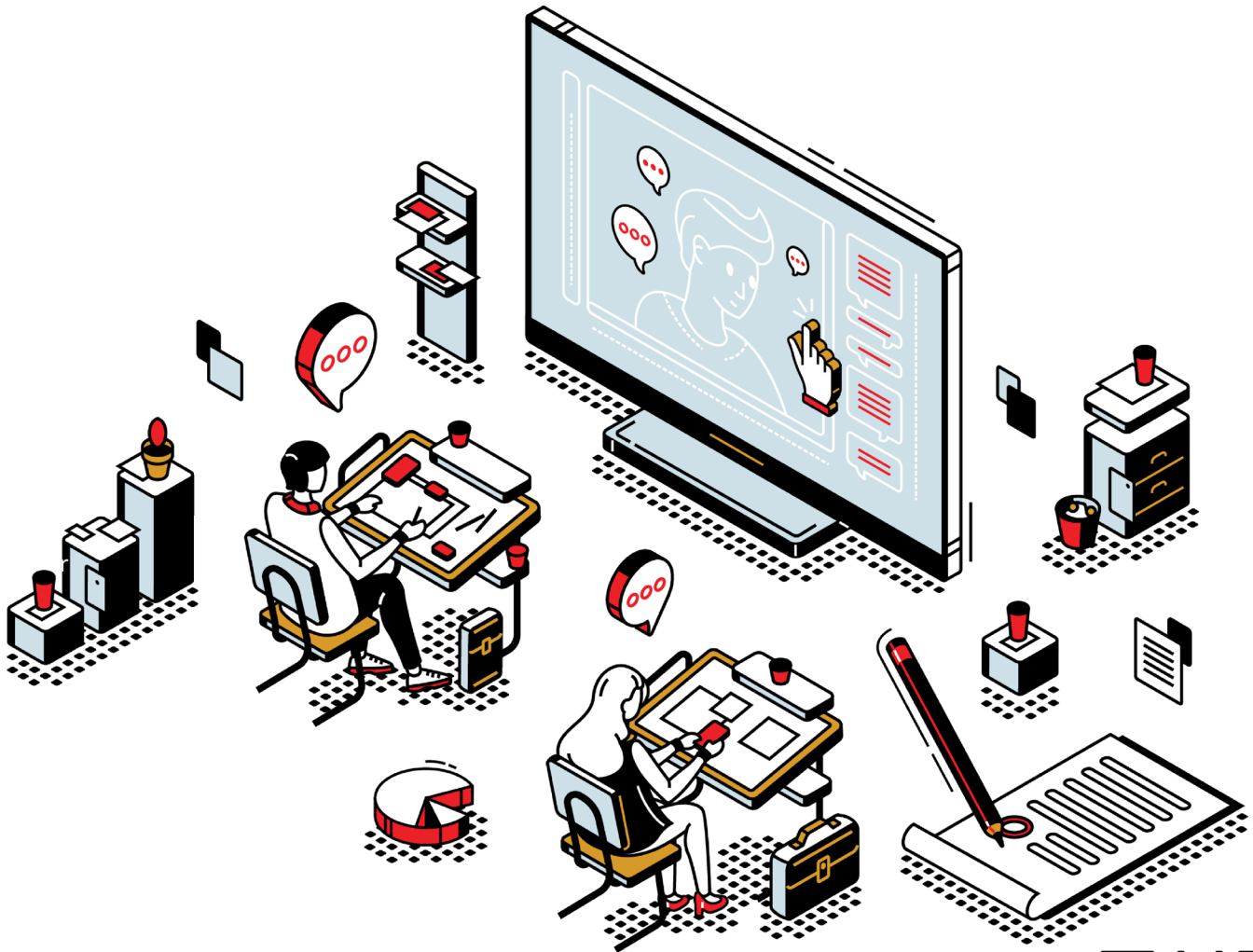


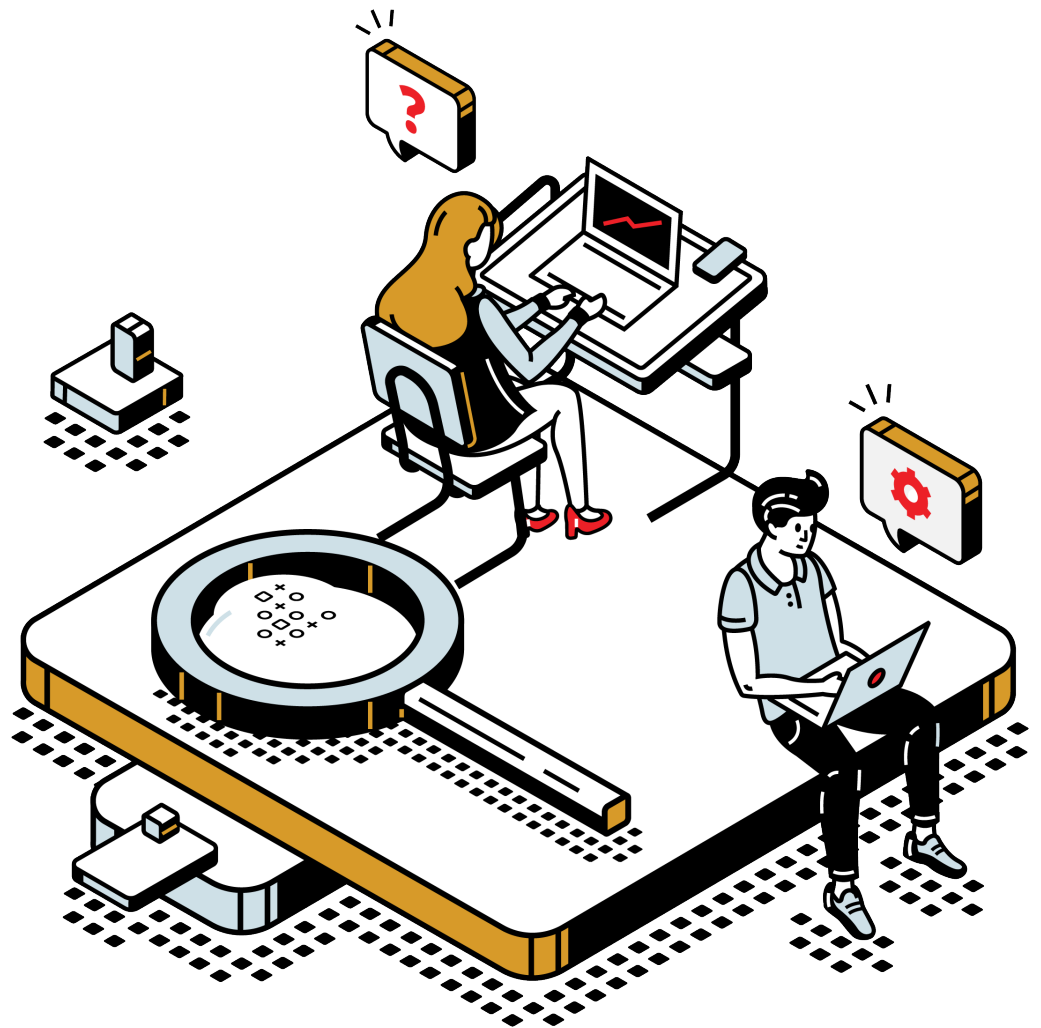
Interface

Education Solutions



Interface + Education

Every year, hundreds of higher education institutions buy Interface force measurement products and services for research, testing labs, samples, innovation centers and for instructional purposes. Working together, we understand that having access to the best components helps our future engineers aspire to greatness in their field.



Interface Empowering Future Engineers

Interface provides force measurement solutions and services to hundreds of universities, coast-to-coast and around the world, every year. When educators look to have the best quality and with precision accuracy, Interface sets the standard for excellence in learning and direct applications.

Interface manufactures the #1 force measurement solutions in the world for those pathfinders and explorers, whether they are creating autonomous vehicles, advanced surgical robotics, new rockets or the world's biggest telescopes – we help do big things!

The company's founder, Richard F. Caris, was a major proponent of charitable giving to STEM-focused institutions and programs. In 2015, Caris donated \$20 million to the University of Arizona Richard F. Caris Mirror Lab to support the construction of mirrors used for the Giant Magellan Telescope. The Mirror Lab has utilized Interface products in its mirror polishing process for the past twenty years, supporting exploration and education for generations to come.

The Interface University Program is designed to advance and spark more innovation by utilizing the best of Interface's robust line of products. We offer every qualified institution a discount on our standard products, whether you are looking to fully stock an on-campus metrology lab or get a sensor to test a planet rover vehicle!

Industry Leading Quality

Interface is celebrated for meeting and exceeding the quality needs for our customer's projects. Our products are built in accordance with A2LA, International Standard ISO/IEC 17025:2005 and ANSI/NCSL Z540-1-1994. This accreditation demonstrates technical competence for a defined scope and the operation of a laboratory quality management system.



Interface Standard Products

- SPECIAL Education Institutions Discounts: 10% Off All Standard & Loyalty Program Discounts up to 25%
- Load Cells
- Torque Transducers
- Multi-Axis Sensors
- Miniature Load Cells
- Load Frames
- Accessories
- Calibration & Verification Equipment
- Instrumentation
- Digital Instrumentation
- Custom Product Solutions
- FREE QuickShip48

Interface Education

The Interface University Program

Interface is investing in the engineers of tomorrow with our dedicated Interface University Program. The STEM-focused initiative promotes innovation and education by providing access to the best force measurement products, services, and experts in the industry.

As the world's leader in force measurement solutions, Interface created the specialized Interface University Program to provide discounted products and services, educational materials and access to renowned test and measurement expertise.



Interface Standard Products

- **Get Started Bundle** with Interface LowProfile, Sealed S-Type and Mini Beam Load Cells, Torque Transducer, Indicator with 25% savings.
- **Load Cell 101 Field Guide** by Interface Engineers - free copy with purchase
- 10% off all standard products

Interface Calibration and Repair Services:

- **Calibration Services Program** discounts
- Expedited repair services with special discounts
- 25% off 3-year annual calibration services programs for maintenance



Education Support and Resources

- Internships for R&D at Interface HQ in Arizona
- R&D Projects for PhD Candidates
- Sponsored Test & Measurement Class Projects or Challenges
- Engineering School Grants
- Failure Testing Projects
- Engineering Hours: Class, Speaking, Events

The distinct Interface University Program offers higher education institutions and students reductions on the industry's most accurate and reliable force measurement standard products and calibration services to accelerate research and development, advance science, perform accurate testing, and promote exploration.

Through the unique program, Interface is also providing educational support in the form of internships, R&D projects, sponsored test and measurement class projects, grants, and community STEM program support based on availability and application requirements.

"Interface has been a long-time partner of the University of Arizona," said Buell Jannuzi, Ph.D., Steward Observatory director and head of the Department of Astronomy, University of Arizona. "Their commitment to STEM and support of the Mirror Lab has been critical to our efforts, as well as the education of our students."

The Richard F. Carris Mirror Lab

In 2015, Interface's visionary founder Richard F. Caris had many legacies, one of which is the donation he made to The University of Arizona's (UA) Mirror Lab. This endowment was a testament to his unwavering commitment to innovation, exploration, and science. Because of his deep personal interest and generous donation to the lab, UA named it the Richard F. Caris Mirror Lab.

At the Richard F. Caris Mirror Lab, scientists, engineers, and technicians are developing large, lightweight mirrors with unparalleled surface accuracy. The actual mirrors are helping to advance science and discovery around the world with the new generation of optical telescopes that can explore the universe through optical and infrared light. The actual mirrors developed at the lab represent a sweeping departure from the old conventional solid-glass mirrors.

Although the lab has been using Interface's load cells long before 2015, the purpose of the Caris donation was to aid in the construction of the Giant Magellan Telescope (GMT) with the lab's revolutionary mirror casting capabilities.

The Mirror Lab is an example of Interface's University Program that provides special and beneficial incentives for students and higher education programs. Interface knows that when programs learn with the best force measurement products, they can advance their learnings and encourage future innovations.

One of the additional benefits was advancing Interface and the Mirror Lab's collaboration in providing additional technical education, support, and resources to UA engineering students.

Interface Invests in Our Future, By Investing in You

We know that utilizing the best force measurement products advances learning in metrology and engineering programs. We support university initiatives to standardize on Interface products with special incentives.

Interface has developed a variety of topics for educational seminars, including humidity's effect on load cell performance, the basics of metrology, how to properly calibrate a load cell, and the impact of high elevation on load cells.

Our expertly-trained Application Engineers are able to help with any questions regarding our Interface University Program. Let us help, your success is our success. For more information go to our site interfaceforce.com or call 480-948-5555.

Interface Education

Interface supports advanced studies and research capabilities at higher education institutions in order to accelerate product research & development, advance science, performance accurate testing and promote exploration.

If you know what you need and are ready to talk to our custom applications engineer today, email or call today!

**To learn more
about the Interface
University Program
call 480-948-5555.**

Interface is the world's trusted leader in technology, design and manufacturing of force measurement solutions. Our clients include a "who's who" of the aerospace, automotive and vehicle, medical device, energy, industrial manufacturing, test and measurement industries.

Interface engineers around the world are empowered to create high-level tools and solutions that deliver consistent, high quality performance. These products include load cells, torque transducers, multi-axis sensors, wireless telemetry, instrumentation and calibration equipment.

Interface, Inc., was founded in 1968 and is a US-based, woman-owned technology manufacturing company headquartered in Scottsdale, Arizona.