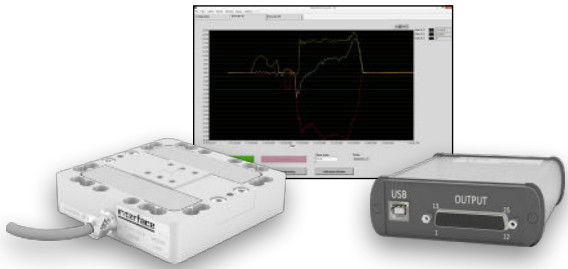


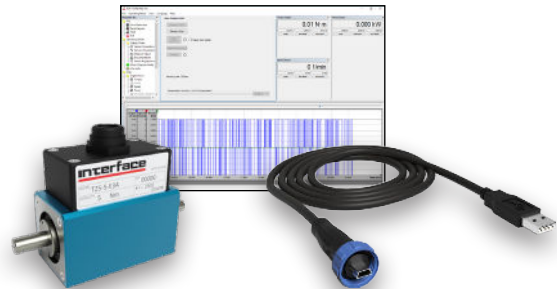
# Interface

## Data AQ Pack

BlueDAQ Instrument Family *Data AQ Pack*



T-USB-VS Rotary Torque Transducer *Data AQ Pack*



WTS Wireless *Data AQ Pack*



DIG-USB PC Interface Module *Data AQ Pack*



INF-USB-VS3 PC Interface Module *Data AQ Pack*



9325 Portable Display *Data AQ Pack*



Data AQ Pack v1.0 01-17-2023

# Interface Data AQ Pack Systems

Products in this brochure are complete data acquisition products that are offered by Interface Inc. and ensure top performance with any Interface Inc. transducer.

## BlueDAQ Instrument Family Data AQ Pack

### Single, Dual, 3-Axis and 6-Axis Force Sensor

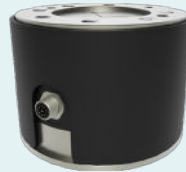
Connecting your transducers to the BlueDAQ Family Data AQ Pack will provide you with convenient way to view the test results for your single axis, dual axis, 3-axis and 6-axis transducers. The Data AQ Pack will provide a means to setup, log, and graph and display data from your application. All Interface single, dual, 3-axis and 6-axis force sensor can be used.



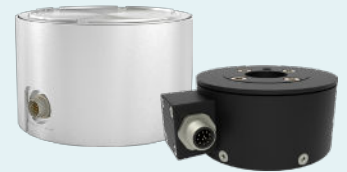
**1200 Standard Precision**  
300 lbf to 2,000K lbf  
1.33 kN to 8,896 kN



**3-Axis Force**  
Force: 0.45 lbf to 112K lbf  
Force: 2 N to 500 kN



**3AR Series Round 3-Axis Load Cells**  
Force: 2.2K lbf to 112K lbf  
Force: 10 kN to 500 kN



**6-Axis Force Torque**  
Force: 11.2 to 180K lbf  
Torque: 8.85 lbf-in to 354K lbf-in  
Force: 50 N to 800K N  
Torque: 1 Nm to 40K Nm



**6ADF Series 6-Axis DIN Flange-Type Load Cells**  
Force: 20 N to 1.2 kN  
Torque: 1 Nm to 60 Nm



**BX8-AS Data Acquisition System & Amplifier**  
8 Channel



**BX8-HD15 Data Acquisition System & Amplifier**  
8 Channel



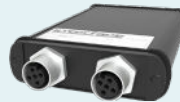
**BX8-HD44 Data Acquisition System & Amplifier**  
8 Channel



**BSC4D Bridge Amplifier & PC Interface Module**  
4 Channel



**BSC1 Single Channel PC Interface Module & Bridge Amplifier**  
Single Channel



**BSC2 Dual Channel PC Interface Module**  
Dual Channel



**9330 Battery Powered High Speed Data Logging Indicator**  
Portable Display



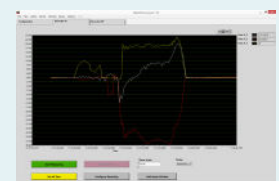
**X15 Pipo**  
Mini PC  
Windows 10 OS  
11.6" FHD Screen Tablet



**X4 Pipo**  
IP67 Rugged Tablet  
Waterproof  
Windows 10 OS  
10.1" Screen



**Freestanding Pipo Stand**  
Freestanding Mount  
Height Adjustment, Swivel, Tilt, and Rotation Options  
For Use with X15 Pipo only



**BlueDAQ**  
Scale Input/Output,  
Force & Moment Value Calculation,  
Graphing, Logging, & Display

## WTS Wireless Data AQ Pack

### On-Cable or Intergrated Wireless Acquisition Module

Connecting your transducers to the WTS Wireless Data AQ Pack will provide you with convenient wireless communication with speeds up to 200 samples per second. The Data AQ Pack will provide a means to setup, log, graph and display data and display mapping of your application. All Interface force sensor can be used.



**WTS 1200** Standard Precision  
LowProfile® Wireless Load Cell  
300 lbf to 2,000K lbf  
1.33 kN to 8,896 kN



**WTS-AM-1E** Wireless Strain  
Bridge Transmitter Module  
For Strain Bridge Input



**WTS-BS-3E** Wireless Base  
Station with USB Interface  
Includes WTS Toolkit  
Software and Log 100 Software



**X15 Pipo**  
Mini PC  
Windows 10 OS  
11.6" FHD Screen Tablet



**X4 Pipo**  
IP67 Rugged Tablet  
Waterproof  
Windows 10 OS  
10.1" Screen



**Freestanding Pipo Stand**  
Freestanding Mount  
Height Adjustment, Swivel,  
Tilt, and Rotation Options  
For Use with X15 Pipo only



**WTS Toolkit**  
Setup and Scaling, Logging,  
and Graphing Software



**Log 100 Software**  
Display, Logging, Graphing,  
and Mapping Software

## T-USB-VS Rotary Torque Transducer Data AQ Pack

### USB Output Option Rotary Torque Transducers

Connecting your transducers to the T-USB Rotary Torque Transducer Data AQ Pack will provide you with convenient way to view the test results for your torque transducers that have internal USB functionality. The Data AQ Pack will provide a means to setup, log, and graph and display data from your application.



**T12** Square Drive Style  
Rotary Torque Transducer  
0.88 lbf-in to 44K lbf-in  
0.1 Nm to 5K Nm



**T15** Hex Drive Style  
Rotary Torque Transducer  
1.77 lbf-in to 177K lbf-in  
0.2 Nm to 20 Nm



**T25** High Speed Shaft Style  
Rotary Torque Transducer  
0.885 lbf-in to 44.3K lbf-in  
0.1 Nm to 5K Nm



**USB Cable**  
USB Type A to USB Type B, Mini  
USB 2.0  
IP68 Rated



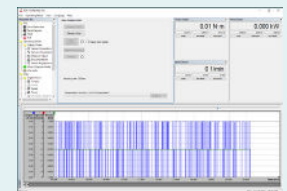
**X15 Pipo**  
Mini PC  
Windows 10 OS  
11.6" FHD Screen Tablet



**X4 Pipo**  
IP67 Rugged Tablet  
Waterproof  
Windows 10 OS  
10.1" Screen



**Freestanding Pipo Stand**  
Freestanding Mount  
Height Adjustment, Swivel,  
Tilt, and Rotation Options  
For Use with X15 Pipo only



**T-USB-VS Software**  
Adjustment, Control, Read-Out,  
Display, and Storing of Measured  
Values

## DIG-USB PC Interface Module *Data AQ Pack*

### Force and Torque Sensors

Connecting your transducers to the DIG-USB Data AQ Pack will provide you with convenient way to view the test results for your load cell or torque transducer. The Data AQ Pack will provide a means to setup, log, and graph and display data from your application. All Interface load cell or torque transducer can be used.



**1200 Standard Precision**  
300 lbf to 2,000K lbf  
1.33 kN to 8,896 kN



**DIG-USB USB Output Module**  
Configuration, Calibration, Graphing,  
Logging, and Display Software



**DIG-USB-F Fast USB Output Module**  
Configuration, Calibration, Graphing,  
Logging, and Display Software



**X15 Pipo**  
Mini PC  
Windows 10 OS  
11.6" FHD Screen Tablet



**X4 Pipo**  
IP67 Rugged Tablet  
Waterproof  
Windows 10 OS  
10.1" Screen



**Freestanding Pipo Stand**  
Freestanding Mount  
Height Adjustment, Swivel,  
Tilt, and Rotation Options  
For Use with X15 Pipo only



**DIG-USB Toolkit**  
Configuration, Calibration, Data  
Recording and Review,  
and Parameter Management



**DIG-USB-F Toolkit**  
Configuration, Calibration, Data  
Recording and Review,  
and Parameter Management

## INF-USB-VS3 PC Interface Module *Data AQ Pack*

### mV/V Force and Torque Sensors

Connecting your transducers to the INF-ISB-VS3 Data AQ Pack will provide you with convenient way to view the test results for your load cell or torque transducer. The Data AQ Pack will provide a means to setup, log, and graph and display data from your application. All Interface mV/V load cell or torque transducer can be used.



**T2/T4 Ultra and Standard Precision**  
0.88 lbf-in to 177K lbf-in  
0.1 Nm to 20K Nm



**SSM/SSM2 Sealed S-Type**  
50 lbf to 5K lbf  
200 N to 25 kN  
Available with Fatigue Rated Options



**INF-USB3 PC Input Module**  
Single and Dual Channel  
mV/V, VDC, or mA Input



**SI-USB4 PC Input Module**  
Single and Dual Channel  
mV/V, VDC, or mA Input



**X15 Pipo**  
Mini PC  
Windows 10 OS  
11.6" FHD Screen Tablet



**X4 Pipo**  
IP67 Rugged Tablet  
Waterproof  
Windows 10 OS  
10.1" Screen



**Freestanding Pipo Stand**  
Freestanding Mount  
Height Adjustment, Swivel,  
Tilt, and Rotation Options  
For Use with X15 Pipo only



**INF-USB-VS3 Software**  
Adjustment, Control, Read-Out,  
Display, and Storing of Measured  
Values

## 9325 Portable Display Data AQ Pack

### Force and Torque Sensors

Connecting your transducers to the 9325 Data AQ Pack will provide you with convenient way to view the test results for your load cell or torque transducer. The Data AQ Pack will provide a means to setup, log, and graph and display data from your application. All Interface load cell or torque transducer can be used.



**1200 Standard Precision**  
300 lbf to 2,000K lbf  
1.33 kN to 8,896 kN



**9325 Portable Sensor Display**  
Digital  
Battery & USB Powered  
TEDS Ready



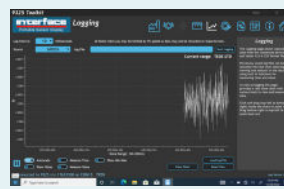
**X15 Pipo**  
Mini PC  
Windows 10 OS  
11.6" FHD Screen Tablet



**X4 Pipo**  
IP67 Rugged Tablet  
Waterproof  
Windows 10 OS  
10.1" Screen



**Freestanding Pipo Stand**  
Freestanding Mount  
Height Adjustment, Swivel,  
Tilt, and Rotation Options  
For Use with X15 Pipo only



**9325 ToolKit**  
Setup & Scaling, Logging,  
& Graphing Software

## Pipo Windows OS Tablets and Accessories

Portable and Rugged Windows Tablet PCs

### PIPO X15

Windows 10 OS 11.6 Inch FHD Screen Tablet Intel Core  
RAM 8GB SSD 180G Mini PC



#### PIPO X15 Features:

- Intel Core i3 processor Broadwell i3-5005U 2.00 GHz
- 11.8 inch FHD IPS screen display with 1920 x 1280 pixels resolution
- Windows 10, Memory: 8GB + 180GB SSD
- Easy pairing with most Bluetooth-enabled devices (computer, mobile phone, keyboard, and others)
- 2.4GHz WiFi + 100Mbps Ethernet, fast network access
- Bluetooth, WIFI, Lan port RJ45, RS232, USB port 6, and HDMI

### PIPO X4

Windows 10 10.1 Inch IP67 Rugged Tablet Intel Pentium 6GB  
128GB Waterproof



#### PIPO X4 Features:

- 10.1 inch FHD screen
- Windows 10
- Has RAM 6GB + ROM 128GB eMMC
- Intel Cherry Trail Z8350 quad core processor
- Supports WiFi
- Bluetooth 4.0 and HDMI functions

### Freestanding Pipo Stand

This stand provides a wide range of height adjustment, swivel, tilt, and rotation options. It is portable and easy to install.

#### Stand Features:

- Freestanding Mount
- 90° Swivel Left Or Right
- 45° Rotation Up Or Down
- 360° Rotation
- 18.3" Adjustable Height
- For Use with X15 Pipo only



# Interface Data AQ Pack

- Configuration and calibration
- Graphing
- Logging on demand
- Visual displays
- Measurement of values
- Recording of measurement data
- Monitoring in real-time
- Programmable audible alarms

*Interface Data AQ Packs are all available for project designs requiring the highest performance.*

**To learn more about the Interface products or force measurement solutions call 480-948-5555.**

**Interface is the world's trusted leader in technology, design and manufacturing of force measurement solutions.**

**Our clients include a "who's who" of the aerospace, automotive and vehicle, medical device, energy, industrial manufacturing, test and measurement industries.**

Interface engineers around the world are empowered to create high-level tools and solutions that deliver consistent, high quality performance. These products include load cells, torque transducers, multi-axis sensors, wireless telemetry, instrumentation and calibration equipment.

Interface, Inc., was founded in 1968 and is a US-based, woman-owned technology manufacturing company headquartered in Scottsdale, Arizona.