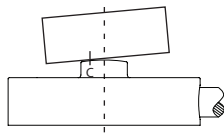


## ConvexBT LOAD BUTTON LOAD CELL (U.S. & METRIC)

### FEATURES & BENEFITS

- Superior to any other load button
- Integral temperature compensation
- Enhanced eccentric load rejection
- Multi-point calibration
- Integral load button
- Small diameter
- Environmentally sealed
- Heat treated stainless steel



OFF CENTERLINE MISALIGNMENT

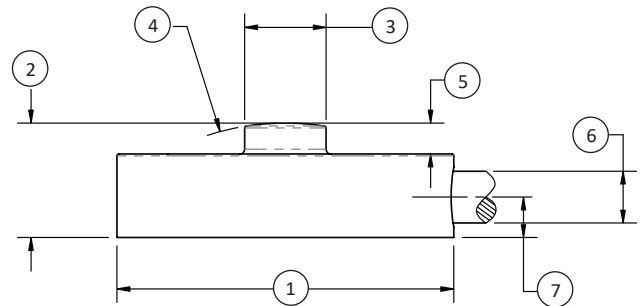
### SPECIFICATIONS

Parameter		Capacity	
Measuring Range	lbf	5	10, 25, 50, 100, 250, 500, 1000
	kN	0.02	0.04, 0.11, 0.22, 0.44, 1.11, 2.22, 4.44
Rated Output – mV/V		1.00 ± 20%	2.00 ± 20%
Nonlinearity – %FS		± 0.25	
Hysteresis – %FS		± 0.25	
Static Error Band – %FS / MAX		± 0.50	
Nonrepeatability – %RO 0.5% @ 1°		± 0.10	
<b>Temperature</b>			
Compensated Range	°F	60 to 160	
	°C	21 to 77	
Operating Range	°F	-40 to 175	
	°C	-40 to 80	
Effect on Zero – %RO / deg		± 0.50	
Effect on Output – % / deg		± 0.20	
Creep, 20 minutes – %		± 0.15	
Input Resistance – Ohm		350 +50/-3.5	
Output Resistance – Ohm		350 +50/-3.5	
Insulation Resistance – Megohm		5000	
Zero Balance – %RO		± 2	
Barometric Sensitivity		0	
Eccentric Load Sensitivity – %		0.5 @ 1deg	
<b>Overload Ratings</b>			
Safe, axial load – %CAP / MAX		150	
Ultimate, axial load – %CAP / MAX		300	
Deflection at capacity - inch / Nom		0.0011	
Excitation, nominal – VDC		5	
Excitation, maximum – VDC or VAC		7	
Weight (without cable) / Nom	lb	< 0.02	
	kg	< 0.009	
Material		17-4 PH Heat Treated Stainless Steel	

### STANDARD CONFIGURATION



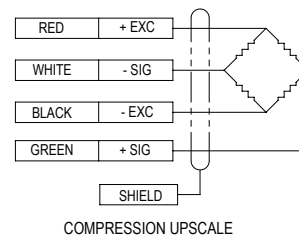
MODEL LBSU-100 (Shown)



### DIMENSIONS

See Drawing	Model					
	LBSU-5-50		LBSU-100-250		LBSU-500-1000	
	Capacity					
	U.S. (lbf)	Metric (kN)	U.S. (lbf)	Metric (kN)	U.S. (lbf)	Metric (kN)
	5, 10, 25, 50	0.02, 0.04, 0.11, 0.22	100, 250	0.44, 1.11	500, 1000	2.22, 4.44
	in	mm	in	mm	in	mm
(1)	Ø0.38	Ø9.5	Ø0.5	Ø12.70	Ø0.75	Ø19.1
(2)	0.125±0.01	3.18±0.25	0.15	3.8	0.25	6.4
(3)	Ø0.09	Ø2.3	Ø0.12	Ø3.1	Ø0.18	Ø4.5
(4)	SR0.25	SR6.4	SR0.38	SR9.5	SR4.0	SR101.6
(5)	0.005	0.14	0.03	0.7	0.07	1.7
(6)	Ø0.09	Ø2.2	Ø0.09	Ø2.2	Ø0.09	Ø2.2
(7)	0.06	1.5	0.06	1.5	0.06	1.5

### WIRING DIAGRAM



International System of Units (SI) dimensions and capacities are provided for conversion only. Standard products have U.S. capacities and dimensions. SI capacities available upon special request and at an additional cost.