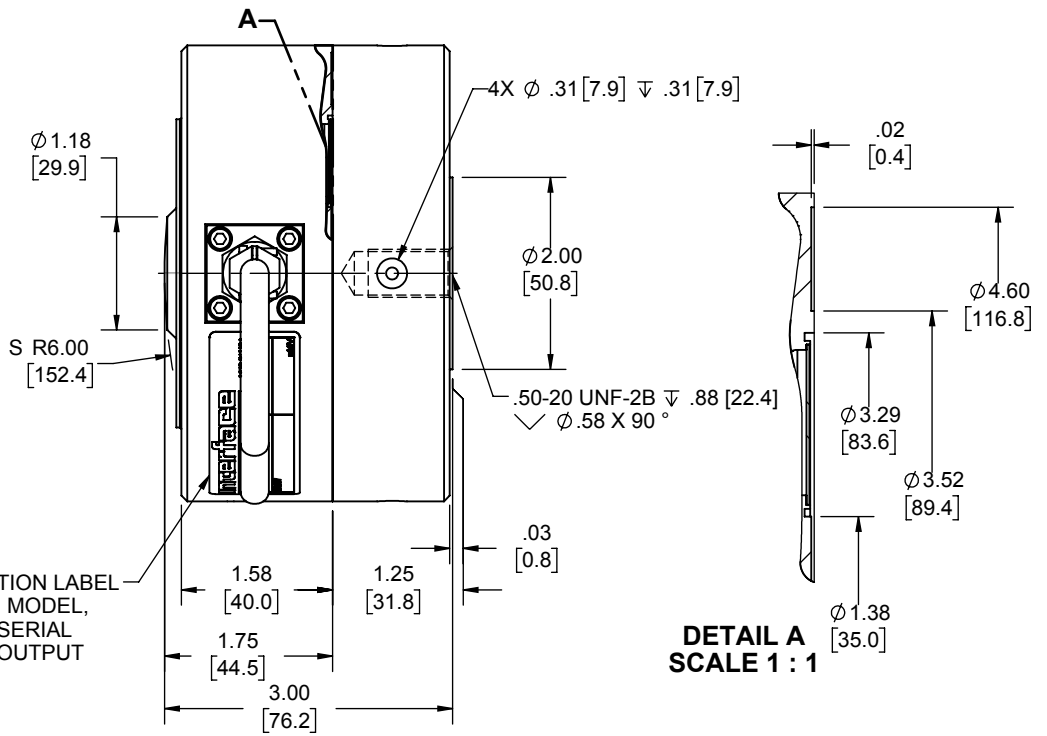
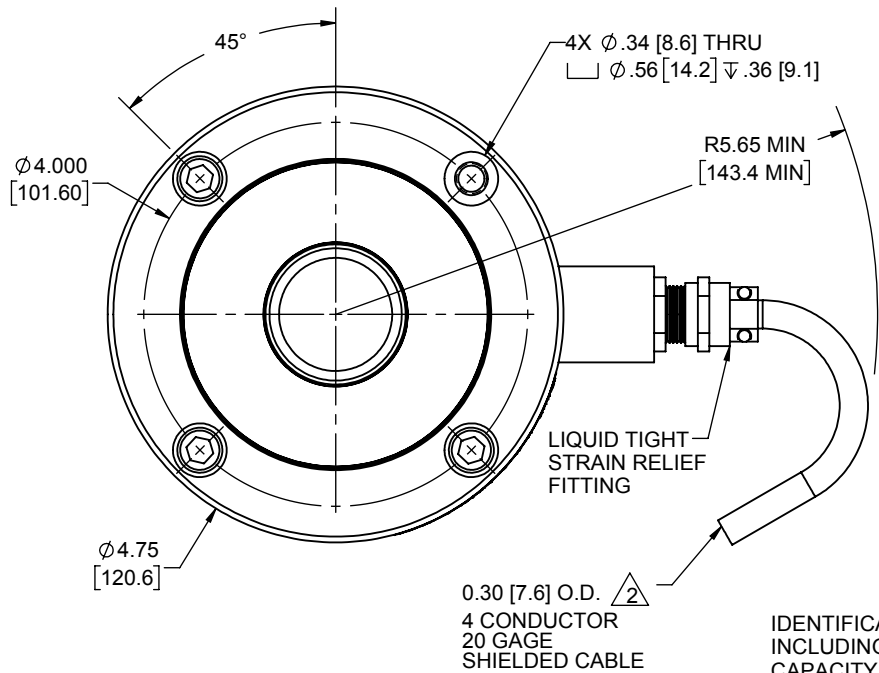


LOAD CELL CHARACTERISTICS	
CAPACITY	25K, 50K (lbf)

Interface Inc. claims proprietary rights in the information disclosed herein. This drawing is furnished in confidence on the express understanding that neither it nor any reproduction thereof will be disclosed to others or used for the purpose of manufacture or procurement of the article or part shown herein without written permission of Interface Inc. The drawing shall remain the property of Interface Inc. and shall be returned upon request by Interface Inc.

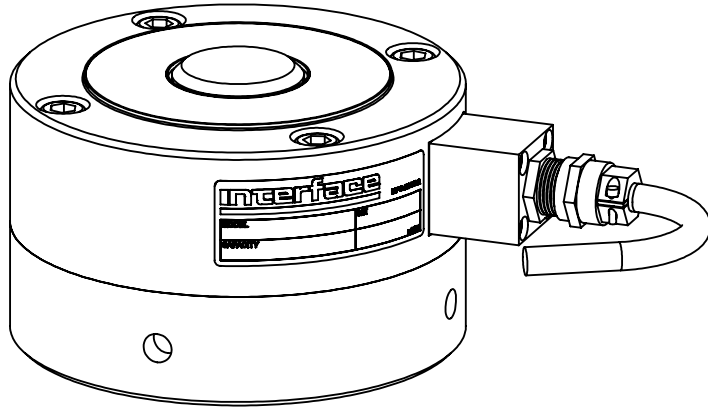
80015

REVISIONS			
REV.	DESCRIPTION	DATE	APPROVED
--	INITIAL RELEASE	05/21/96	
A	REDRAWN - UPDATED TO CURRENT STD'S	11/29/2018	CARLOS S.



IDENTIFICATION LABEL INCLUDING: MODEL, CAPACITY, SERIAL NUMBER & OUTPUT

DETAIL A
SCALE 1 : 1



INTEGRAL CABLE MODELS	
COLOR	FUNCTION
RED	+ EXCITATION
GREEN	+ SIGNAL
WHITE	- SIGNAL
BLACK	- EXCITATION
SHIELD	N/C
TENSION UPSCALE	

- 5. DO NOT PAINT.
- 4. PAINT INTERFACE BLUE.
- 3. SEALING: UPPER & LOWER DIAPHRAGM HERMETICALLY SEALED WITH TIG WELD. CABLE ENTRY VIA HERMETIC GLASS SEALED HEADER.
- 2. CABLE JACKET: POLYURETHANE. STANDARD CABLE LENGTH IS 20 FT [6 M]. NON-STANDARD CABLE LENGTH PER OPTION CODE.
- 1. BASE IS OPTIONAL. MODEL NUMBERS ENDING IN (-B) HAVE A BASE INSTALLED.

UNLESS OTHERWISE SPECIFIED
DIMENSIONS ARE IN INCHES [mm]
TOLERANCES ARE:
ANGLES ± 0° 30'
.XX ± .01 [0.25]
.XXX ± .005 [0.13]

Interface 7418 E. HELM DRIVE
FORCE MEASUREMENT SOLUTIONS, SCOTTSDALE, AZ 85260 USA

TITLE: OUTLINE MODEL: 3221	
SIZE: A	DWG. NO: 80015
SCALE: 1:2	SHEET 1 OF 1

APPROX WEIGHT (lbs)	
WITH BASE	12.42
WITHOUT BASE	6.29
DESIGNED:	DATE: 05/21/96
DETAILED: PER	WEIGHT: (APPROX) SEE TABLE