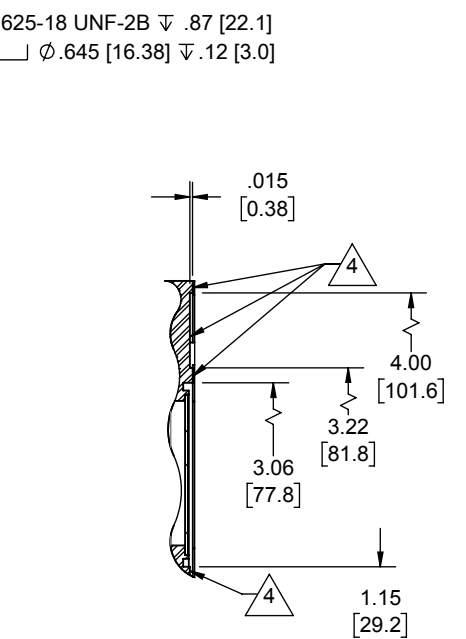
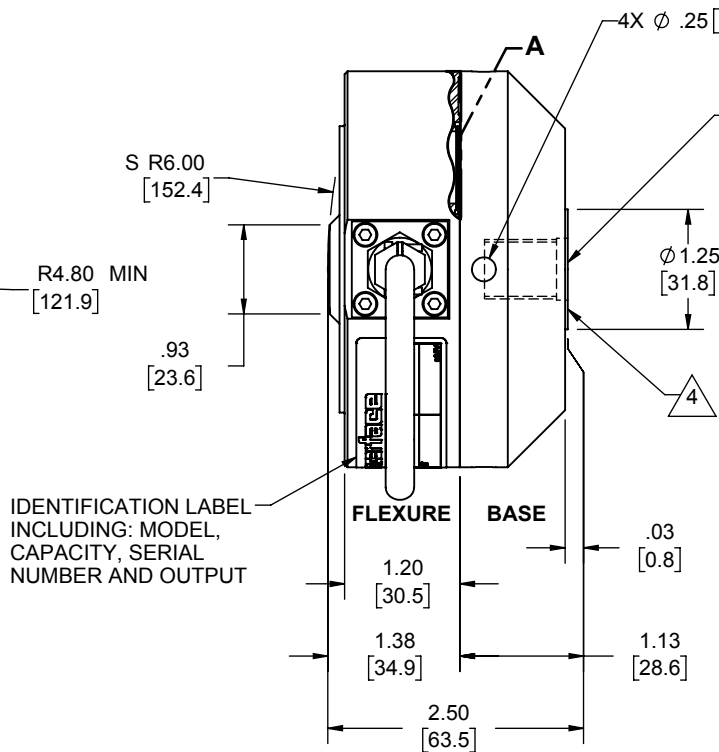
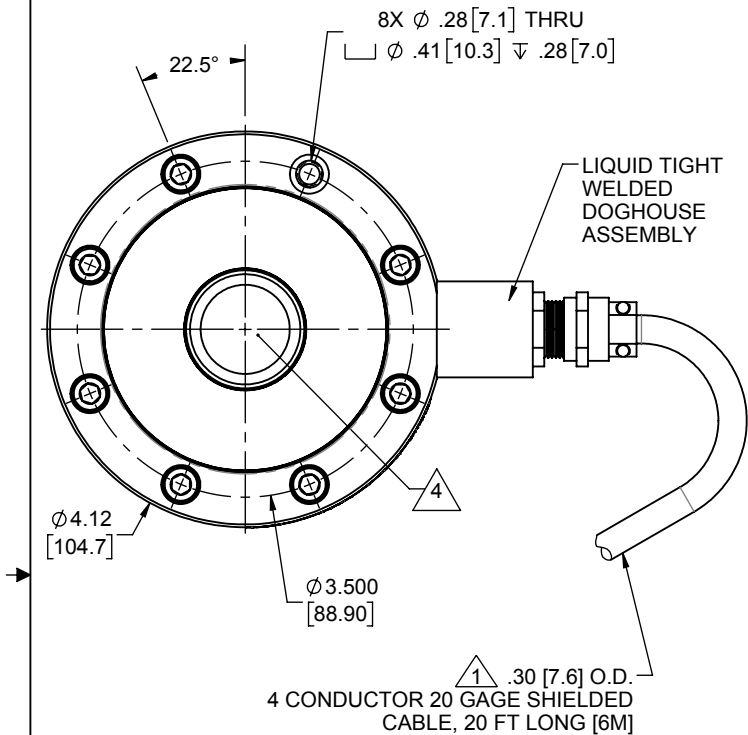


LOAD CELL CHARACTERISTICS	
CAPACITY	2.5, 5 & 10 (Klbf)

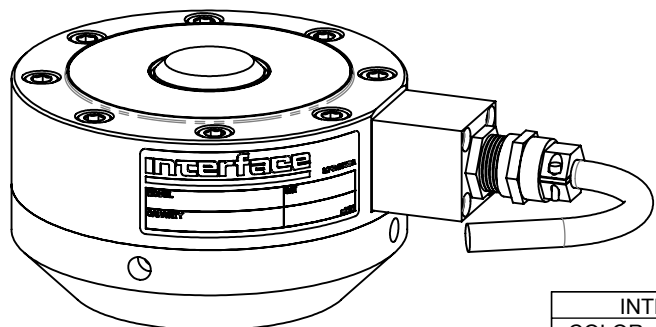
Interface Inc. claims proprietary rights in the information disclosed herein. This drawing is furnished in confidence on the express understanding that neither it nor any reproduction thereof will be disclosed to others or used for the purpose of manufacture or procurement of the article or part shown herein without written permission of Interface Inc. The drawing shall remain the property of Interface Inc. and shall be returned upon request by Interface Inc.

80013			
REVISIONS			
REV.	DESCRIPTION	DATE	APPROVED
-	INITIAL RELEASE	01-03-97	
A	REDRAWN, UPDATED TO CURRENT STDS	7/15/2019	CS
B	ADDED 2.5K CAPACITY & WEIGHT TABLE	7/11/2019	CARLOS S.



DETAIL A
SCALE 1 : 1

- 4 NO PAINT.
- 3. BASE IS OPTIONAL. MODEL NUMBERS ENDING IN (-B) HAVE A BASE INSTALLED.
- 2. SEALING: UPPER & LOWER DIAPHRAGM HERMETICALLY SEALED WITH TIG WELD. CABLE ENTRY VIA HERMETIC GLASS SEALED HEADER.
- 1 CABLE JACKET: POLYURETHANE STANDARD CABLE LENGTH IS 20 ft (6 M) NON-STANDARD CABLE LENGTH PER OPTION CODE.



INTEGRAL CABLE	
COLOR	FUNCTION
RED	+ EXCITATION
GREEN	+ SIGNAL
WHITE	- SIGNAL
BLACK	- EXCITATION
SHIELD	N / C

UNLESS OTHERWISE SPECIFIED DIMENSIONS ARE IN INCHES [mm]	
TOLERANCES ARE:	
ANGLES ± 0° 30'	
.XX	± .01 [0.25]
.XXX	± .005 [0.13]
CREATOR	DATE
DESIGNED:	
DETAILED: PER	01/03/97
WEIGHT: (APPROX)	SEE TABLE

Interface
 FORCE MEASUREMENT SOLUTIONS, 7418 E. HELM DRIVE, SCOTTSDALE, AZ 85260 USA

TITLE:
OUTLINE HERMETIC MODEL: 3211

SIZE: DWG. NO: **80013** REV: **B**

SCALE: 1:2 SHEET 1 OF 1

APPROX WEIGHT (lbs)	
WITH BASE	6.9
WITHOUT BASE	3.3