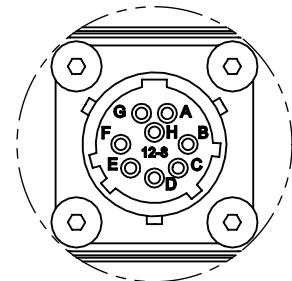
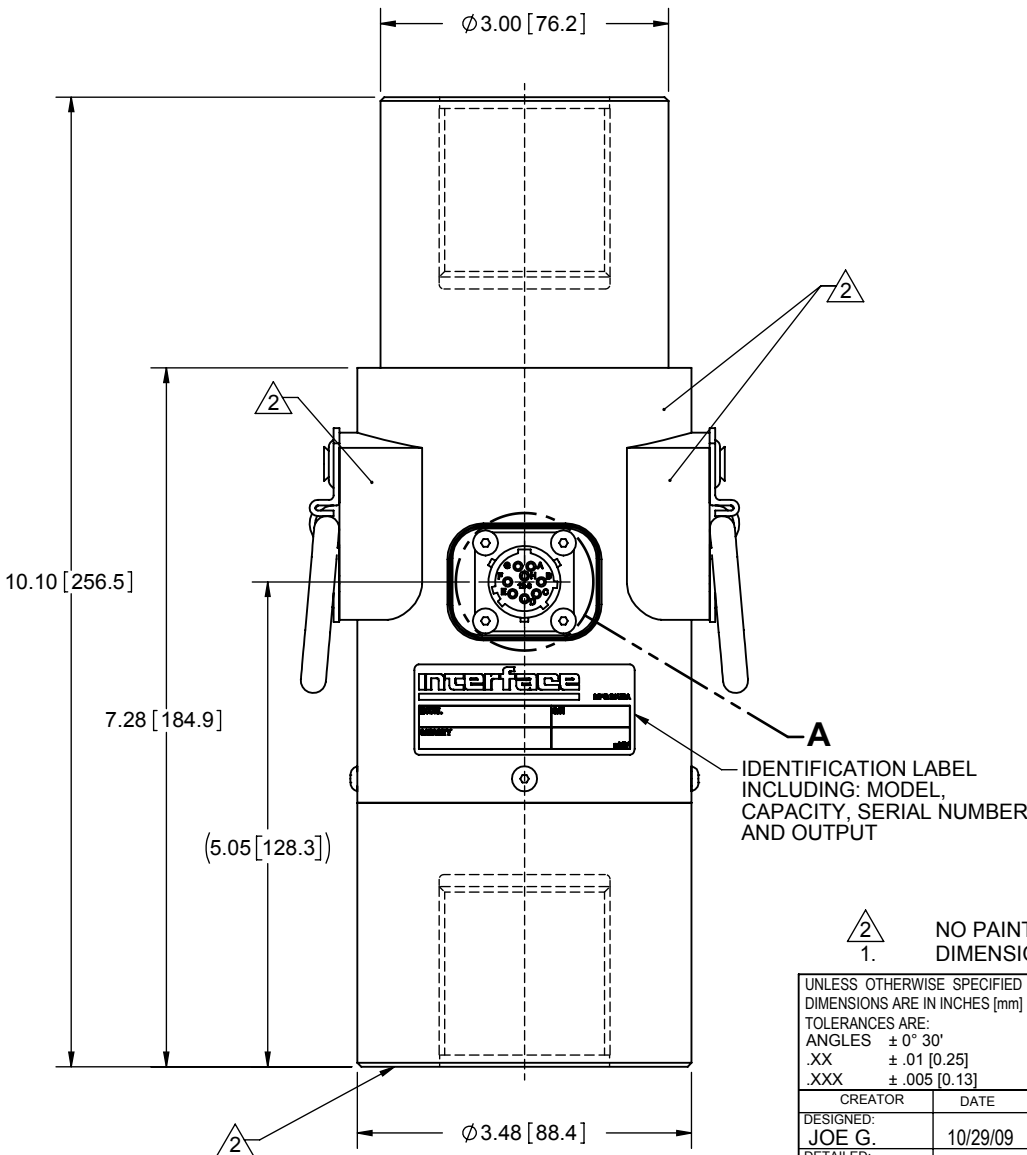
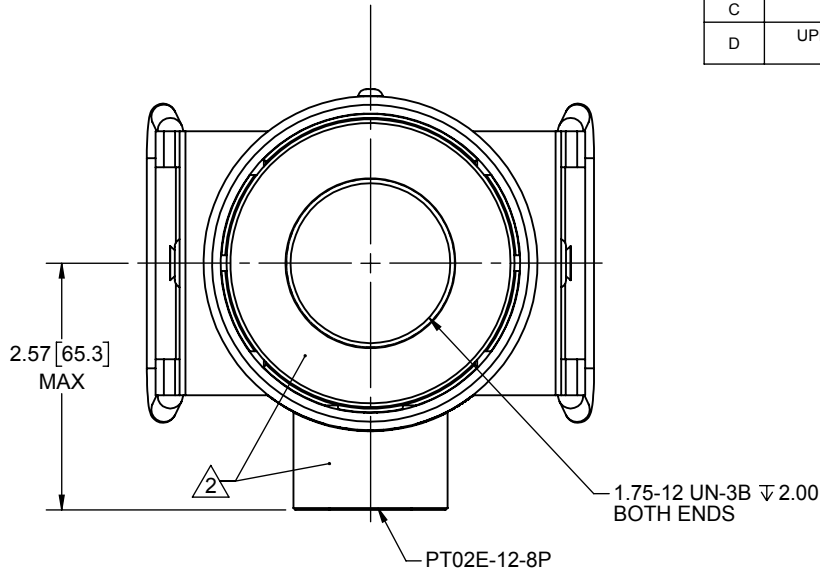


Interface Inc. claims proprietary rights in the information disclosed herein. This drawing is furnished in confidence on the express understanding that neither it nor any reproduction thereof will be disclosed to others or used for the purpose of manufacture or procurement of the article or part shown herein without written permission of Interface Inc. The drawing shall remain the property of Interface Inc. and shall be returned upon request by Interface Inc.

80935

REVISIONS

REV.	DESCRIPTION	DATE	APPROVED
A	INITIAL RELEASE	10/30/09	
B	2230 WAS 2232	11/30/09	
C	REPLACED HANDLE MOUNTS	12/11/12	Me
D	UPDATED COVER ASSEMBLY FROM "SCREW-ON" TO "SLIP-ON"	01/29/2018	CS



DETAIL A
SCALE 1 : 1

CONNECTOR PINOUT	
PIN	FUNCTION
A	+ EXCITATION
B	+ SIGNAL
C	- SIGNAL
D	- EXCITATION
E	- SENSE
F	+ SENSE
G	- SHUNT CAL
H	IDENT R
TENSION UPSCALE	

A
IDENTIFICATION LABEL
INCLUDING: MODEL,
CAPACITY, SERIAL NUMBER
AND OUTPUT

1. NO PAINT
DIMENSIONAL TOLERANCE: ±0.02 [±0.5].

UNLESS OTHERWISE SPECIFIED
DIMENSIONS ARE IN INCHES [mm]
TOLERANCES ARE:
ANGLES ± 0° 30'
.XX ± .01 [0.25]
.XXX ± .005 [0.13]

Interface 7418 E. HELM DRIVE
FORCE MEASUREMENT SOLUTIONS. SCOTTSDALE, AZ 85260 USA

CREATOR	DATE
DESIGNED: JOE G.	10/29/09
DETAILED: ME	10/30/2009
WEIGHT: (APPROX) 18.101 (lbs)	

TITLE: OUTLINE MODEL 2230-100K	
SIZE: A	DWG. NO.: 80935
SCALE: 1:2	SHEET 1 OF 1

REV:
D