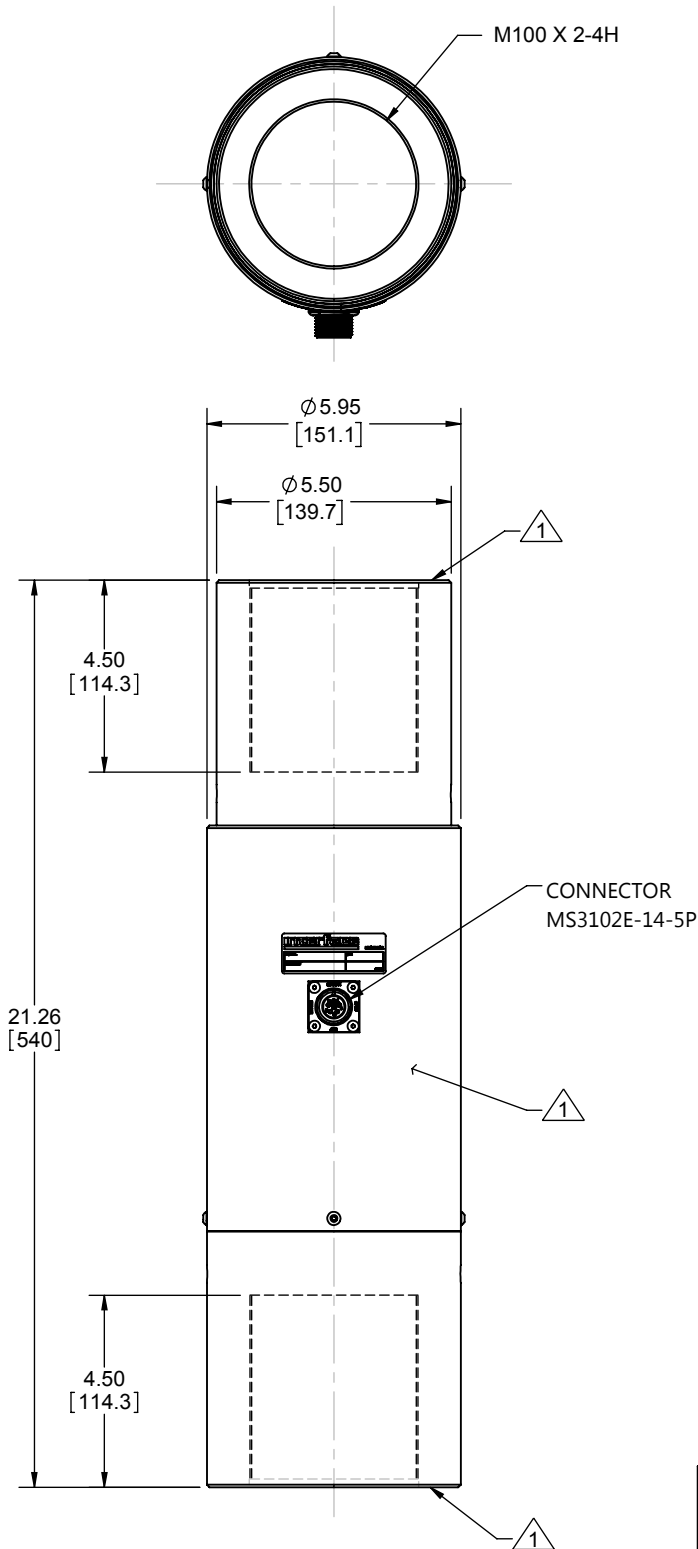


Interface Inc. claims proprietary rights in the information disclosed herein. This drawing is furnished in confidence on the express understanding that neither it nor any reproduction thereof will be disclosed to others or used for the purpose of manufacture or procurement of the article or part shown herein without written permission of Interface Inc. The drawing shall remain the property of Interface Inc. and shall be returned upon request by Interface Inc.

82377

REVISIONS

REV.	DESCRIPTION	DATE	APPROVED
A	INITIAL RELEASE	06/01/2018	CS



CONNECTOR PINOUT	
PIN	FUNCTION
A	+ EXCITATION
B	- EXCITATION
C	- SIGNAL
D	+ SIGNAL
E	N/C
TENSION UPSCALE	

UNLESS OTHERWISE SPECIFIED  
DIMENSIONS ARE IN INCHES [mm]  
TOLERANCES ARE:  
ANGLES ± 0° 30'  
.XX ± .01 [0.25]  
.XXX ± .005 [0.13]

**Interface** 7418 E. HELM DRIVE  
**FORCE MEASUREMENT SOLUTIONS.** SCOTTSDALE, AZ 85260 USA

CREATOR	DATE
DESIGNED: CARLOS S.	05/22/2018
DETAILED: BRET B.	05/23/2018
WEIGHT: (APPROX)	

TITLE: <b>OUTLINE MODEL 2160BTS-2250KN</b>	
SIZE: A	DWG. NO: <b>82377</b>
SCALE: 1:4.5	SHEET 1 OF 1

LOAD CELL CHARACTERISTICS	
CAPACITY	2250KN

REV:  
**A**