

LOAD CELL CHARACTERISTICS

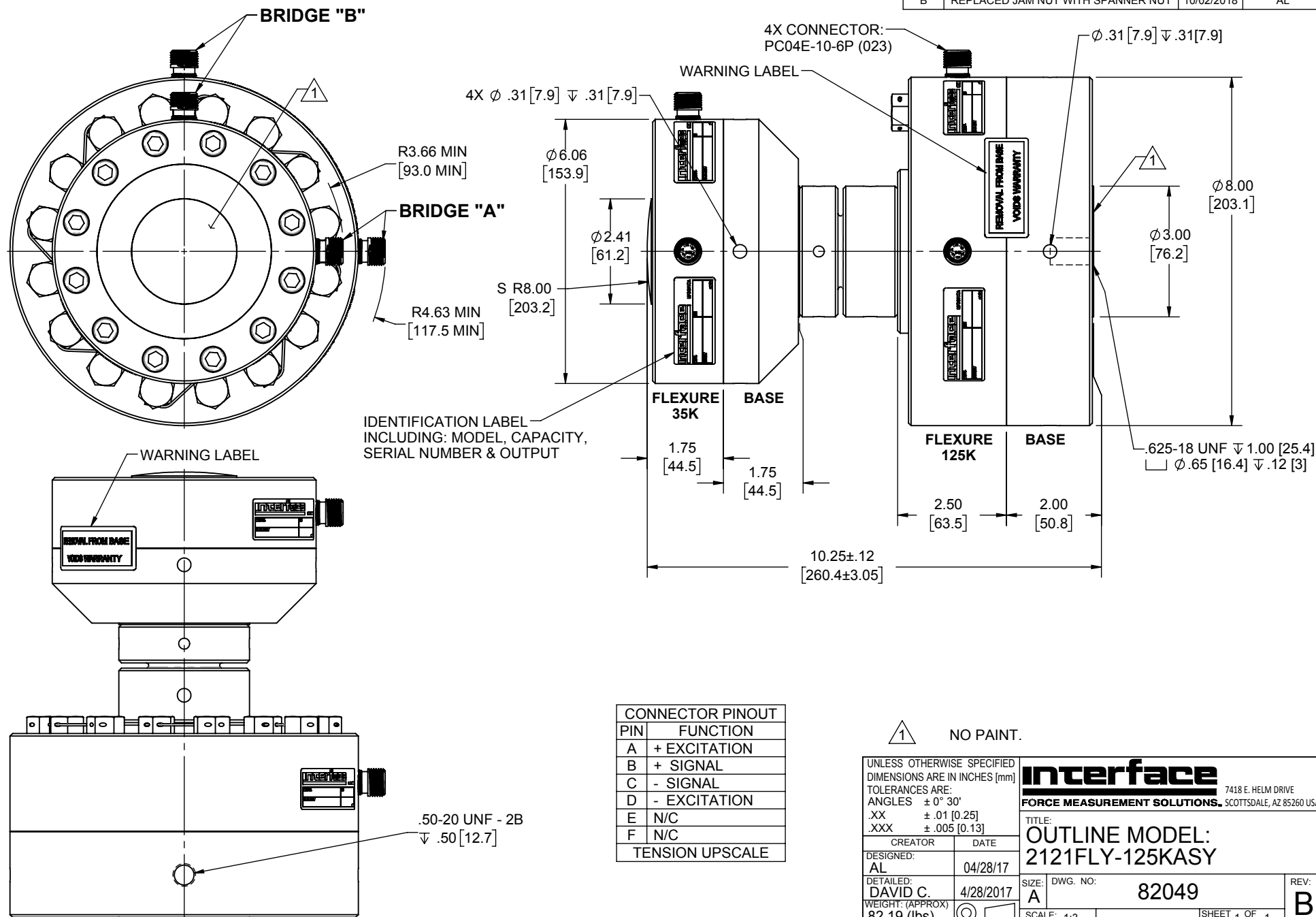
CAPACITY	35K, 125K (lbf)
----------	-----------------

Interface Inc. claims proprietary rights in the information disclosed herein. This drawing is furnished in confidence on the express understanding that neither it nor any reproduction thereof will be disclosed to others or used for the purpose of manufacture or procurement of the article or part shown hereon without written permission of Interface Inc. The drawing shall remain the property of Interface Inc. and shall be returned upon request by Interface Inc.

82049

REVISIONS

REV.	DESCRIPTION	DATE	APPROVED
A	INITIAL RELEASE	7/6/2017	AL
B	REPLACED JAM NUT WITH SPANNER NUT	10/02/2018	AL



CONNECTOR PINOUT	
PIN	FUNCTION
A	+ EXCITATION
B	+ SIGNAL
C	- SIGNAL
D	- EXCITATION
E	N/C
F	N/C
TENSION UPSCALE	

∇ NO PAINT.

UNLESS OTHERWISE SPECIFIED
DIMENSIONS ARE IN INCHES [mm]
TOLERANCES ARE:
ANGLES $\pm 0^\circ 30'$
.XX $\pm .01 [0.25]$
.XXX $\pm .005 [0.13]$

CREATOR	DATE
DESIGNED: AL	04/28/17
DETAILED: DAVID C.	4/28/2017
WEIGHT: (APPROX) 82.19 (lbs)	

Interface
7418 E. HELM DRIVE
SCOTTSDALE, AZ 85260 USA

FORCE MEASUREMENT SOLUTIONS

TITLE:
**OUTLINE MODEL:
2121FLY-125KASY**

SCALE: 1:3

SIZE: DWG. NO:
A 82049

REVISION:
B

SHEET 1 OF 1