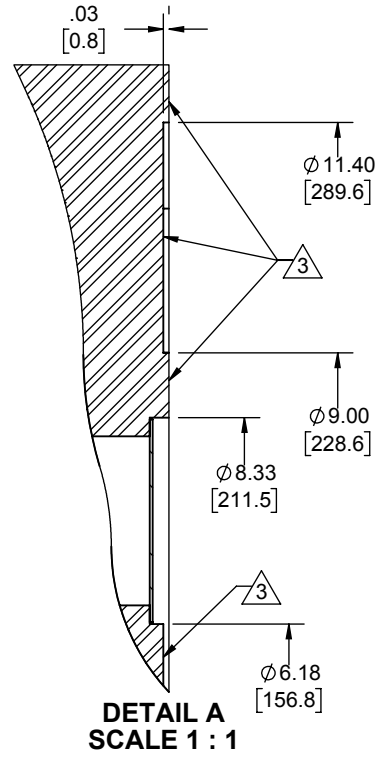
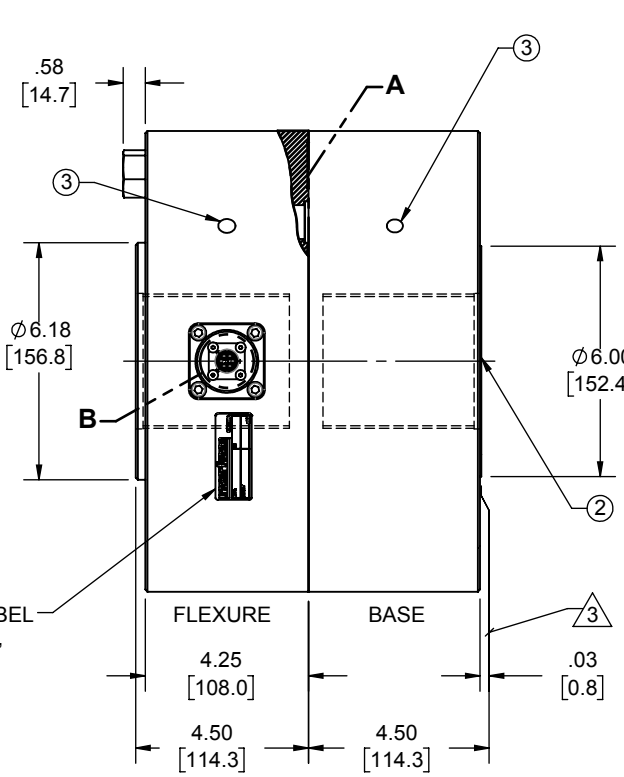
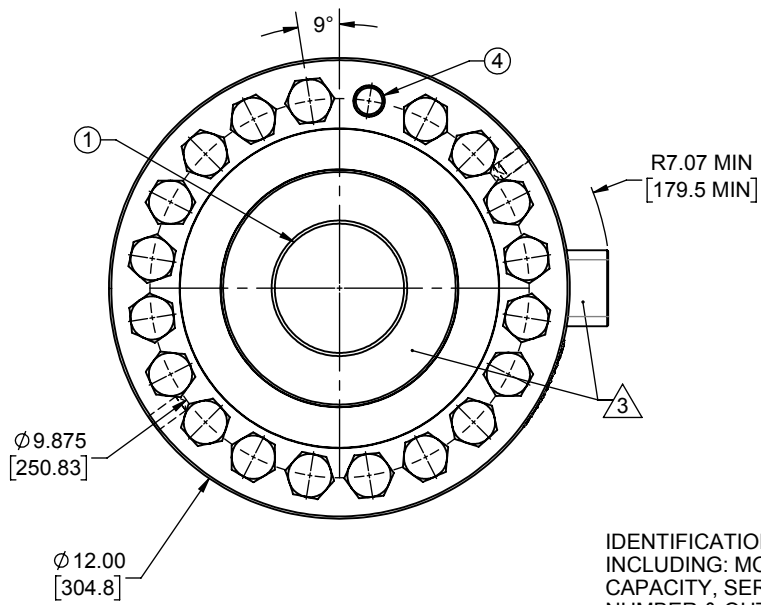


LOAD CELL CHARACTERISTICS

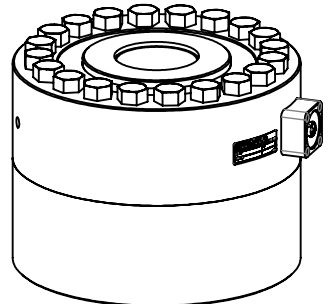
#	CAPACITY	US CAPACITIES		SI CAPACITIES	
		1052	1252	1052	1252
1	FLEXURE THREAD, DEPTH & COUNTERBORE	3.50-8 UN-3B ∇ 3.75 □ ϕ 3.53 ∇ 0.19		M90 X 3-4H ∇ 95.3 □ ϕ 91.4 ∇ 4.8	
2	BASE THREAD, DEPTH & COUNTERBORE	3.50-8 UN-3B ∇ 3.75 □ ϕ 3.53 ∇ 0.19		M90 X 3-4H ∇ 99.8 □ ϕ 91.4 ∇ 4.8	
3	LIFTING THREADS (2 ON FLEXURE, 1 ON BASE)	.50-13 UNC-2B ∇ .50		M16 X 2-6H ∇ .60	
4	20X MTG THRU HOLE	ϕ .79 [20.1] THRU		ϕ .83 [21.0] THRU	

Interface Inc. claims proprietary rights in the information disclosed herein. This drawing is furnished in confidence on the express understanding that neither it nor any reproduction thereof will be disclosed to others or used for the purpose of manufacture or procurement of the article or part shown hereon without written permission of Interface Inc. The drawing shall remain the property of Interface Inc. and shall be returned upon request by Interface Inc.

REVISIONS			
REV.	DESCRIPTION	DATE	APPROVED
A	INITIAL RELEASE	03/05/14	
B	ADDED 1052, METRICS AND BASE	06/18/14	Me
C	REDRAWN, UPDATED TO CURRENT STANDARDS	07/01/16	DLC
D	ADDED TEDS ID CHIP	08/03/16	DLC
E	CONNECTOR PROTECTOR WAS 13166-2, REMOVED C6 WIRING OPTION	05/04/2018	AL

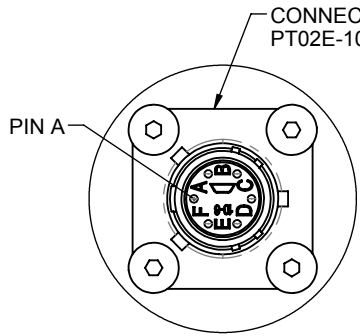


IDENTIFICATION LABEL INCLUDING: MODEL, CAPACITY, SERIAL NUMBER & OUTPUT



CONNECTOR PINOUT		
PIN	4 WIRE OPTION ACK	4 WIRE WITH TEDS
A	+ EXCITATION	+ EXCITATION
B	+ SIGNAL	+ SIGNAL
C	- SIGNAL	- SIGNAL
D	- EXCITATION	- EXCITATION
E	N/C	TEDS DATA
F	N/C	TEDS GROUND

TENSION UPSCALE



- BASE IS OPTIONAL. MODEL NUMBERS ENDING IN (-B) HAVE A BASE INSTALLED.
- CONNECTOR POSITIONS ON MULTIPLE BRIDGE LOAD CELLS ARE ORIENTATED 90° APART, CCW.
- NO PAINT.
- MODELS WITH TEDS ID CHIP HAVE A "T" AT THE END OF THE MODEL NUMBER (1252CDS-400K-TB).

UNLESS OTHERWISE SPECIFIED DIMENSIONS ARE IN INCHES [mm]
 TOLERANCES ARE:
 ANGLES \pm 0° 30'
 .XX \pm .01 [0.25]
 .XXX \pm .005 [0.13]
 CREATOR DATE
 DESIGNED: ALBERT L. 02/26/2014
 DETAILED:
 WEIGHT: (APPROX) 244.1 (lbs)

Interface 7418 E. HELM DRIVE
 FORCE MEASUREMENT SOLUTIONS, SCOTTSDALE, AZ 85260 USA
 TITLE:
OUTLINE MODEL: 1X52
 SIZE: DWG. NO. **81342** REV: **E**
 SCALE: 1:5 SHEET 1 OF 1