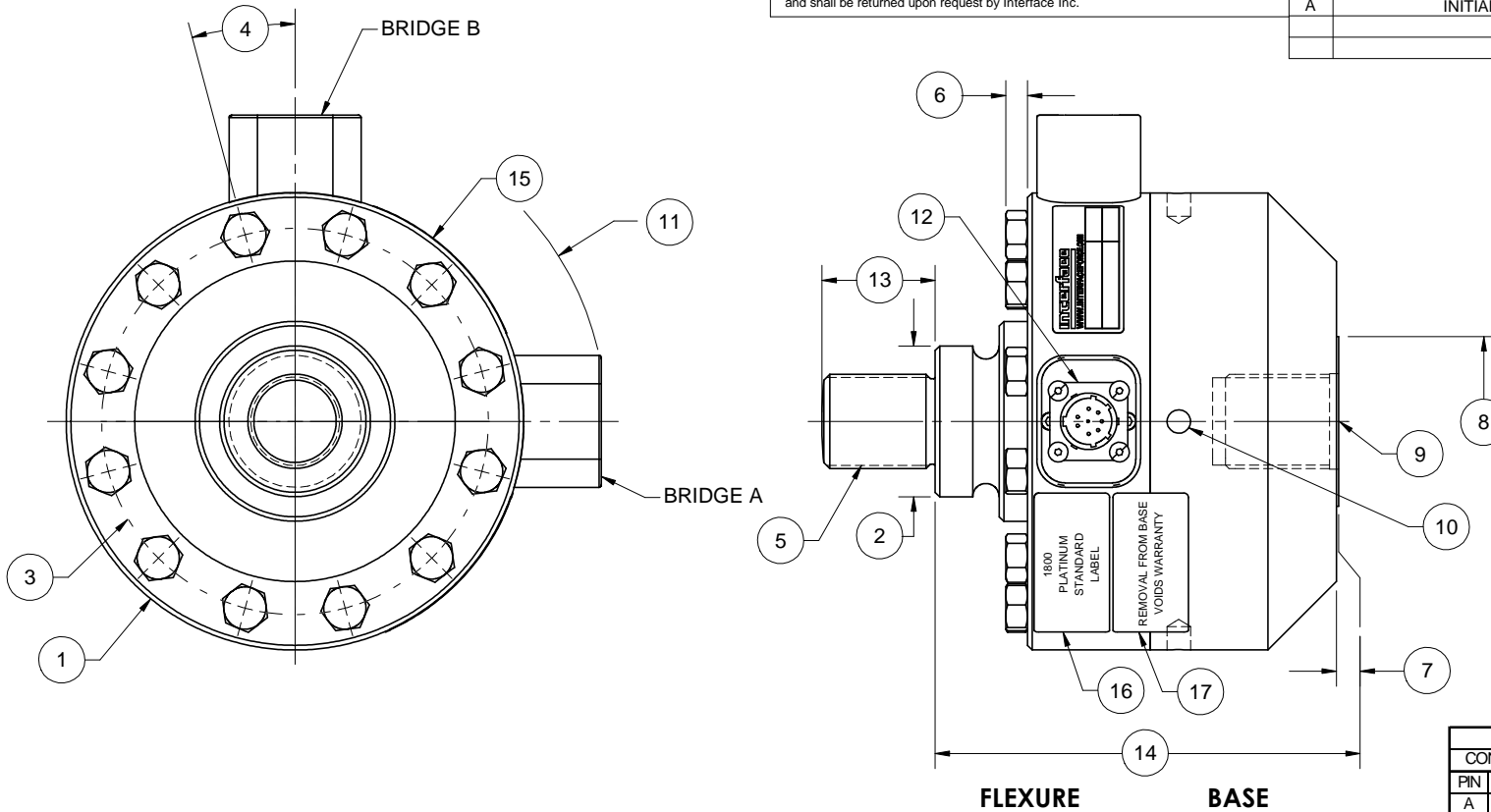


Interface Inc. claims proprietary rights in the information disclosed herein. This drawing is furnished in confidence on the express understanding that neither it nor any reproduction thereof will be disclosed to others or used for the purpose of manufacture or procurement of the article or part shown herein without written permission of Interface Inc. The drawing shall remain the property of Interface Inc. and shall be returned upon request by Interface Inc.

81131

REVISIONS

REV	DESCRIPTION	DATE	APPROVED
A	INITIAL RELEASE	12/01/11	<i>ML</i>



BRIDGE A	
CONNECTOR PINOUT	
PIN	FUNCTION
A	+ EXCITATION
B	+ SIGNAL
C	- SIGNAL
D	- EXCITATION
E	- SENSE
F	+ SENSE
G	- RCAL
H	+ RCAL

BRIDGE B	
CONNECTOR PINOUT	
PIN	FUNCTION
A	+ EXCITATION
B	+ SIGNAL
C	- SIGNAL
D	- EXCITATION
E	- SENSE
F	+ SENSE
G	- RCAL
H	+ RCAL

LOAD CELL CHARACTERISTICS		CAPACITIES
#	CAPACITY	25K (lbf)
1	OUTSIDE DIAMETER	Ø6.06 (Ø153.9)
2	HUB SURFACE DIAMETER	Ø2.00 (Ø50.8)
3	MOUNTING BOLT CIRCLE	Ø5.125 (Ø130.18)
4	MOUNTING BOLT OFFSET ANGLE	15.0°
5	MOUNTING THREAD	1.250-12 UNF-3A
6	BOLT HEAD HEIGHT	0.29 (7.4)
7	BASE PAD HEIGHT	0.03 (0.8)
8	BASE PAD DIAMETER	Ø2.25 (Ø57.2)
9	BASE THREAD, DEPTH & COUNTERBORE	1.250-12 UN-3B √1.50, [] Ø 1.27 √ 0.12
10	(4) SPANNER HOLES SPACED AT 90°	Ø 0.31 √ 0.31 (Ø 7.9 √ 7.9)
11	ROTATIONAL CLEARANCE	R4.16 (R105.7) MIN.
12	CONNECTOR TYPE	PT02E-12-8P
13	MOUNTING THREAD HEIGHT	1.50 (38.1)
14	FLEXURE & BASE OVERALL HEIGHT	5.35 (135.9)
15	IDENTIFICATION LABEL INCLUDING: MODEL, CAPACITY, SERIAL NUMBER & OUTPUT	
16	IDENTIFICATION LABEL INCLUDING: MODEL, CAPACITY, SERIAL NUMBER & OUTPUT	
17	WARNING LABEL	

2. DIMENSIONAL TOLERANCE: ± 0.01 (± 0.3).
 1. DIMENSIONS IN INCHES (mm).
 TENSION UPSCALE

REMOVE BURRS AND SHARP EDGES .02 MAX SURFACE FINISH 63 MICROINCHES		interface ADVANCED FORCE MEASUREMENT 7401 E. BUTHERUS DR. SCOTTSDALE, AZ USA 85260	
CREATOR	DATE	TITLE:	
DESIGNED: KEN V.	11/21/11	OUTLINE	
DETAILED: RLP	11/23/11	1820EGF-25K	
CAM DATA:		SIZE: DWG. NO:	REV:
		A 81131	A
		SCALE: 1:2.5	SHEET 1 OF 1