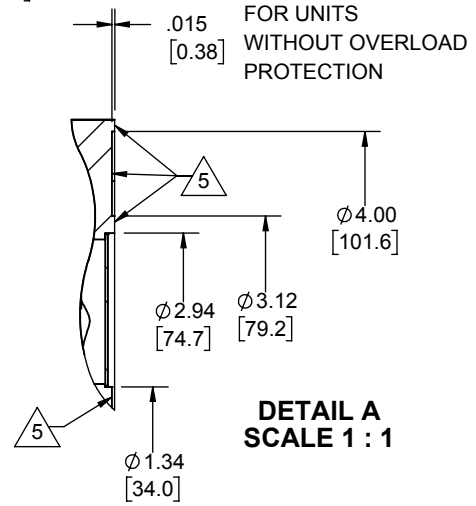
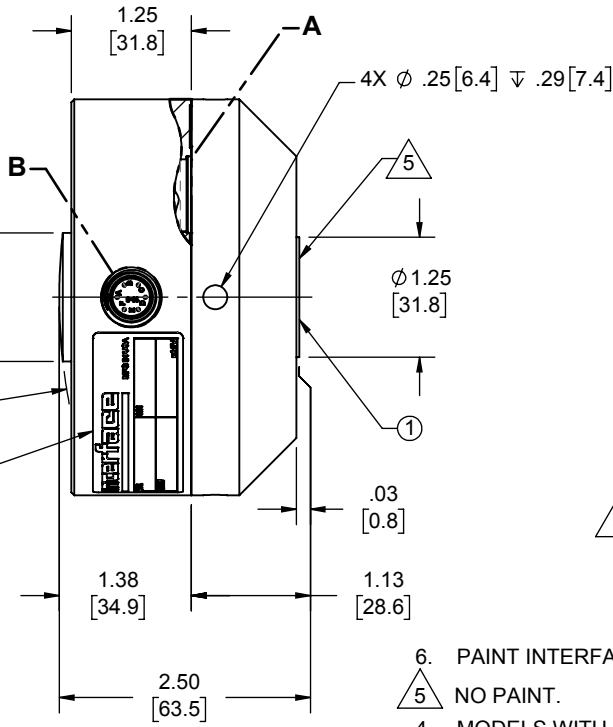
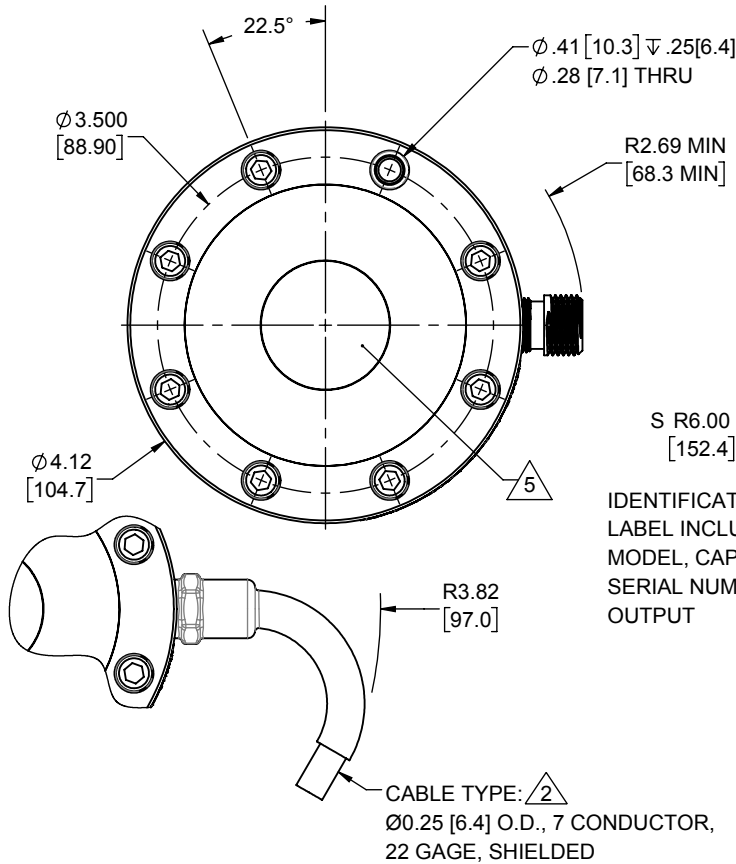


LOAD CELL CHARACTERISTICS

#	CAPACITY	US CAPACITIES	SI CAPACITIES
		3300, 1K, 2K, 5K, 10K (lbf)	2.8, 5, 10, 17.2, 25, 50 (kN)
1	BASE THREAD, DEPTH & COUNTERBORE	.625-18 UNF-3B ∇ 0.87 \sqsubset ϕ .645 ∇ 0.12	M16 X 2-4H ∇ 22.1 \sqsubset ϕ 16.4 ∇ 3.0

Interface Inc. claims proprietary rights in the information disclosed herein. This drawing is furnished in confidence on the express understanding that neither it nor any reproduction thereof will be disclosed to others or used for the purpose of manufacture or procurement of the article or part shown hereon without written permission of Interface Inc. The drawing shall remain the property of Interface Inc. and shall be returned upon request by Interface Inc.

REVISIONS			
REV.	DESCRIPTION	DATE	APPROVED
A	ADDED OUTER & INNER RING SECTION	09/12/06	
B	REDRAWN & UPDATED TO CURRENT STANDARDS, ADDED ADDITIONAL CONNECTOR PINOUTS & NOTE 4	02/04/16	DLC
C	REMOVED C6 WIRING, ADDED NOTED 5 & 6, ADDED 33000 lbf, 2.8kN & 17.2kN CAPACITIES	07/16/2018	SKD



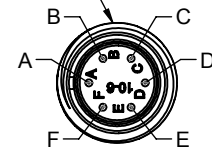
IDENTIFICATION LABEL INCLUDING: MODEL, CAPACITY, SERIAL NUMBER & OUTPUT

CABLE TYPE: \triangle 2
 ϕ 0.25 [6.4] O.D., 7 CONDUCTOR, 22 GAGE, SHIELDED

- PAINT INTERFACE BLUE.
- \triangle 5 NO PAINT.
- MODELS WITH TEDS ID CHIP HAVE A "T" AT THE END OF THE MODEL NUMBER (1211HL-10K-B-T).
- CONNECTOR / CABLE POSITION FOR MULTIPLE BRIDGE LOAD CELLS ARE ORIENTATED IN 90° CCW INCREMENTS.
- \triangle 2 STANDARD CABLE LENGTH IS 10 FT [3 M]. NON-STANDARD CABLE LENGTH PER OPTION CODE.
- BASE IS OPTIONAL ON 1211, MODEL NUMBERS ENDING IN (-B) HAVE A BASE INSTALLED.

CONNECTOR PINOUT		INTEGRAL CABLE MODELS	
PIN	4 WIRE (C1)	4 WIRE (C1 WITH TEDS OPTION)	FUNCTION
A	+ EXCITATION	+ EXCITATION	+ EXCITATION
B	+ OUTPUT	+ OUTPUT	+ OUTPUT
C	- OUTPUT	- OUTPUT	- OUTPUT
D	- EXCITATION	- EXCITATION	- EXCITATION
E	N/C	TEDS DATA	- SENSE
F	N/C	TEDS GROUND	+ SENSE
		WHITE / BLACK	SHUNT CAL
		SHIELD	N/C

CONNECTOR: PC04E-10-6P



DETAIL B SCALE 1 : 1

UNLESS OTHERWISE SPECIFIED DIMENSIONS ARE IN INCHES [mm]	
TOLERANCES ARE:	
ANGLES	\pm 0° 30'
.XX	\pm .01 [0.25]
.XXX	\pm .005 [0.13]
CREATOR:	DATE:
DESIGNED:	
DETAILED: BKS	3/24/1995
WEIGHT: (APPROX) 7 (lbs)	

Interface 7418 E. HELM DRIVE
FORCE MEASUREMENT SOLUTIONS, SCOTTSDALE, AZ 85260 USA

TITLE: **OUTLINE MODEL: 1111 & 1211**

SIZE: DWG. NO: **80002** REV: **C**

SCALE: 1:2 SHEET 1 OF 1

ALL READ UPSCALE IN TENSION