

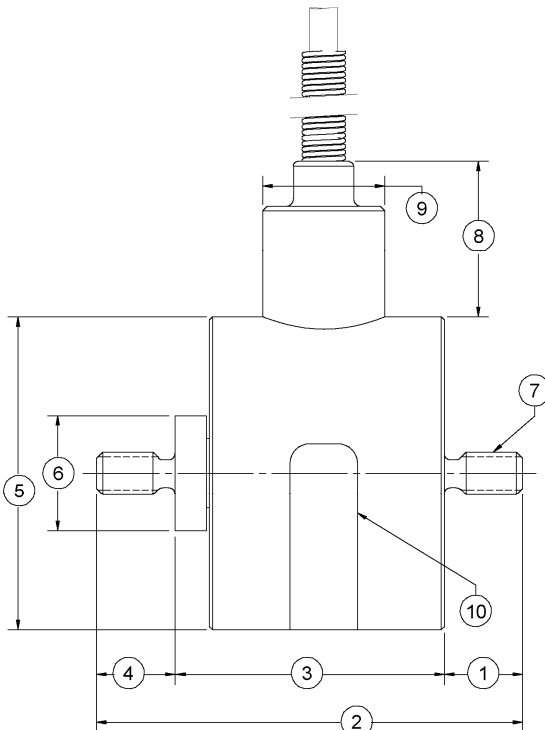
Model WMCP Stainless Steel Load Cell

- Capacities from 500 to 1000g
- Proprietary Interface temperature compensated in gages
- Tension and compression
- Small size
- Environmentally sealed
- Overload protected to 8x capacity



DIMENSIONS

See Drawing	CAPACITY	
	500g, 1000g	
	inch	mm
(1)	0.25	6.4
(2)	1.36	34.5
(3)	0.86	21.9
(4)	0.25	6.4
(5)	1.00	25.4
(6)	0.37	9.4
(7)	# 6 - 32 UNC-3A (Both Ends)	
(8)	0.50	12.7
(9)	0.39	9.9
(10)	Model, Capacity, Serial Number	



SPECIFICATIONS

CAPACITY	500g	1000g
ACCURACY – MAX		
Nonlinearity-% FS	±0.15	±0.15
Hysteresis-% FS	±0.15	±0.15
Nonrepeatability-% RO	±0.15	±0.1
Creep, in 20 min-%	±0.1	±0.05
TEMPERATURE		
Compensated Range-°F	50 to 150	50 to 150
Compensated Range-°C	10 to 66	10 to 66
Operating Range-°F	-65 to 250	-65 to 250
Operating Range-°C	-54 to 121	-54 to 121
Effect on Output-%/°F – MAX	±0.20	±0.20
Effect on Zero- % RO/°F – MAX	±2.00	±1.00
ELECTRICAL		
Rated Output-mV/V (nominal)	.75 ±0.15	1.50 ±0.30
Zero Balance-%RO	±2.0	±2.0
Bridge Resistance-Ohm (nominal)	350 ±3.5	350 ±3.5
Excitation Voltage-MAX	7 VDC or VAC	7 VDC or VAC
Insulation Resistance-Megohm	5000	5000
MECHANICAL		
Calibration	Tension	Tension
Safe Overload-% CAP	1600	800
Cable Length-ft	5	5
Deflection @ RO - inch	0.005	0.010
Weight-lb	0.2	0.2

STANDARD CONFIGURATION

5 ft. Integral Cable

OPTIONS

Extra Cable Length

ACCESSORIES

Instrumentation

WMCP
06/15/12