

Model SSM / SSM2 Sealed S-Type Load Cell (U.S. & Metric)

- Proprietary Interface temperature compensated strain gages
- Environmentally sealed
- 0.02% nonrepeatability
- 0.0008%/°F (0.0015%/°C) temp. effect on output
- 0.025% creep
- Tension and compression



STANDARD CONFIGURATION

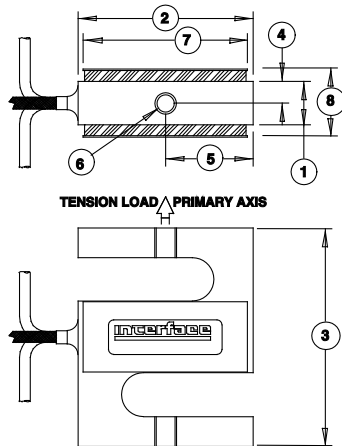
10 ft Integral Cable (SSM-AJ-nn) <or> PC04E-10-6P Standard Connector (SSM-AF-nn). Connector only available in 500-10K lbf or 2-50 kN capacities.

OPTIONS

- PC04E-10-6P Connector (SSM-500 and above)
- LEMO Connector
- Standardized Output
- High Temperature
- Extra Cable Length

ACCESSORIES

- Load Button
- Instrumentation
- Mounting Hardware



SPECIFICATIONS

ACCURACY – (MAX ERROR)			
Nonlinearity-% FS	±0.05		
Hysteresis-% FS	±0.03		
Nonrepeatability-% RO	±0.02		
Creep in 20 min-%	±0.025		
TEMPERATURE			
Compensated Range-°F	0 to 150		
Compensated Range-°C	-15 to 65		
Operating Range-°F	-65 to 200		
Operating Range-°C	-55 to 90		
Effect on Output-%/°F – MAX	±0.0008		
Effect on Output-%/°C – MAX	±0.0015		
Effect on Zero- % RO/°F – MAX	±0.0015		
Effect on Zero- % RO/°C – MAX	±0.0027		
ELECTRICAL			
Rated Output-mV/V (Nominal)	3		
Zero Balance-%RO	±1		
Bridge Resistance-Ohm (Nominal)	350		
Excitation Voltage-MAX	15 VDC		
Insulation Resistance-Megohm	>5000		
MECHANICAL			
Calibration	Tension		
Safe Overload-% CAP	150		
Cable Length-ft	10		
Natural Frequency/Deflection:			
U.S. (lbf)	Metric (N)	Nat. Freq. (Hz)	Deflection (inches)
50	200	1500	0.003
100	500	1850	0.004
150	500	1850	0.004
250	1000	2350	0.006
500	2kN	2150	0.005
750	N/A	2350	0.005
1000	5kN	3350	0.005
2000	10kN	2400	0.005
3000	N/A	3000	0.005
5000	20kN	2520	0.005

DIMENSIONS

See Drawing	SSM								SSM2	
	CAPACITY								CAPACITY	
	U.S.(lbf)	Metric(N)	U.S.(lbf)	Metric(N)	U.S.(lbf)	Metric(kN)	U.S.(lbf)	Metric(kN)	U.S.(lbf)	Metric(kN)
	50	200	100, 150, 250	500, 700,1000	500, 750, 1K, 2K, 3K	2, 5, 10	5K	20	5K, 10K	25, 50
inch	mm	inch	mm	inch	mm	inch	mm	inch	mm	
(1)	0.50	12.7	0.50	12.7	1.00	25.4	1.50	38.1	1.48	37.6
(2)	2.00	50.8	2.00	50.8	2.00	50.8	2.50	63.5	2.98	75.7
(3)	2.50	63.5	2.50	63.5	3.00	76.2	3.50	88.9	3.98	101.1
(4)	0.25	6.40	0.25	6.40	0.50	12.7	0.75	19.1	0.74	18.8
(5)	1.00	25.4	1.00	25.4	1.00	25.4	1.25	31.8	1.49	37.8
(6)	1/4-28 UNF-2B	M6 X 1-6H	1/4-28 UNF-2B	M6 X 1-6H	1/2-20 UNF-2B	M-12 X 1.75-6H	5/8-18 UNF-2B	M16 X 2-6H	0.750-16 UNF-2B	M20 X 1.5-6H
(7)	1.88	47.8	1.88	47.8	1.88	47.8	2.38	60.5	2.88	73.2
(8)	0.82	20.8	0.72	18.3	1.22	31.0	1.75	44.5	1.67	42.4

SSM/SSM2
1/23/13