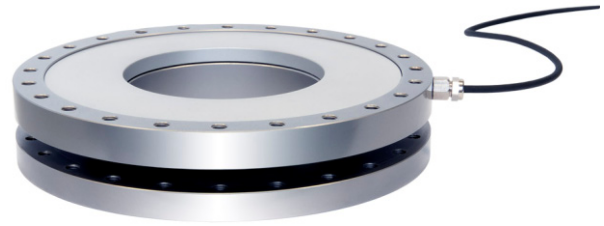


# Model LWPF2 Press Force Load Cell

- Capacities from 100 kN to 600 kN
- Short height
- Large thru-hole
- For press-force monitoring



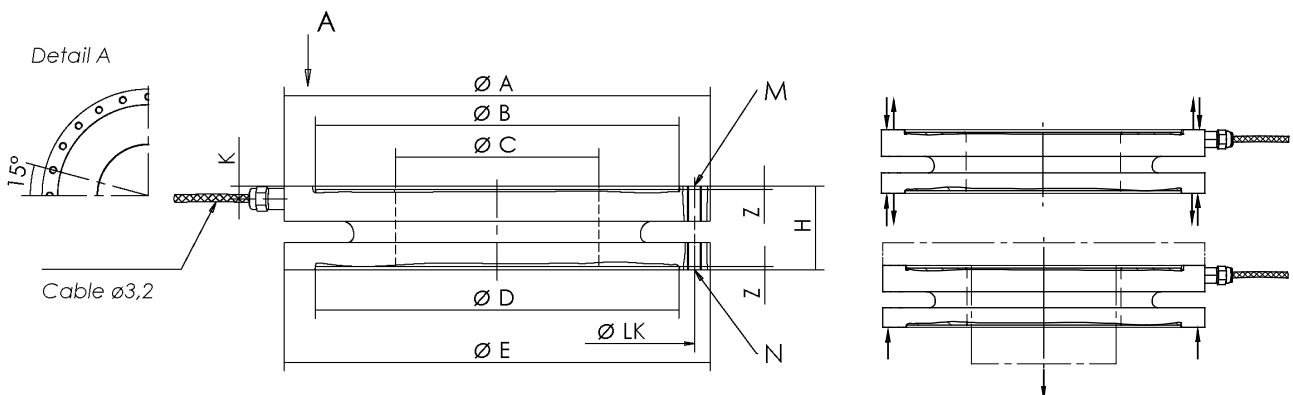
## OPTIONS

Extended Temperature Range (-40°C to +150°C)  
Internal Shunt Resistor – 100% output

## SPECIFICATIONS

ACCURACY – (MAX ERROR)	
Nonlinearity - %FS	+/-0.5
Hysteresis - %FS	+/-0.5
Nonrepeatability - % RO	+/-0.1
Creep, in 30 min - %	+/-0.1
TEMPERATURE	
Effect on Zero - % RO/°C	+/-0.02
Effect on Output - %/°C	+/-0.02
Compensated Range - °C	0 to +60
Operating Range - °C	-10 to +70
ELECTRICAL	
Output – mV/V	1 +/-20%
Excitation Voltage – VDC	2-12
Bridge Resistance – Ohm	700
Electrical Connection	3-meter cable
MECHANICAL	
Safe Overload - % RO	150
Deflection at Rated Capacity - mm	<0.15
Cyclic Load Rating - % RO	+/-70 Peak
IP Rating	60

## DIMENSIONS



Nominal Force [kN]	A	B	C	D	E	H	K	Z	M	LK	N
100	178	152	85	152	178	35	5.4	1	24 x M6	165	24 x M6
200	196	170	120	170	196	35	7	1	24 x M8	182	24 x M8
300	258	226	180	226	258	35	8	1	24 x M10	242	24 x M10
400	258	226	170	226	258	45	8	1	24 x M12	242	24 x M12
600	320	266	205	266	320	60	12.5	1	24 x M16	290	24 x M16

LWPF2  
04/19/13