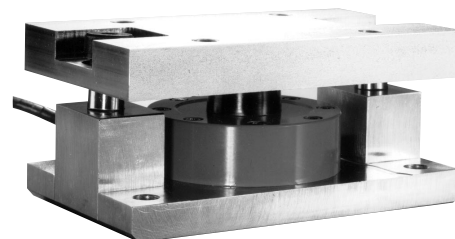


Model A4200 and A4600 Weighcheck Load Cell

Why the Interface model A4200 and A4600 Weighcheck Load Cells are the best in class:

- Capacity ranges from 2.5 to 50Klbf
- High output – 4 mV/V
- Self-centering in all directions
- High safe side load – to 400%
- Standardized output - $\pm 0.1\%$
- Zinc plated (A4200) or stainless steel (A4600)
- Factory assembled for easy field installation
- Static/dynamic/in-motion capabilities
- Low height—4.0" for 2.5K, 5K & 10K; 5.0" for 25K & 50K



SPECIFICATIONS

ACCURACY – (MAX ERROR)

Static Error Band-% FS	± 0.05
Nonlinearity-% FS	± 0.05
Hysteresis-% FS	± 0.03
Nonrepeatability-% RO	± 0.02
Creep, in 20 min-%	± 0.025

TEMPERATURE

Compensated Range-°F	15 to 115
Compensated Range-°C	-10 to 45
Operating Range-°F	-65 to 200
Operating Range-°C	-55 to 90
Effect on Output-%/°F – MAX	± 0.0008
Effect on Zero-% RO/°F – MAX	± 0.0008

ELECTRICAL

Rated Output-mV/V	4.000 $\pm 0.1\%$
(2.5K)	2.000 mV/V $\pm 0.1\%$
Zero Balance-% RO	± 1.0
Bridge Resistance-Ohms	350
Excitation Voltage – MAX	20 VDC
Insulation Resistance – Megohm	5000

MECHANICAL

Calibration	Compression
Safe Overload-% CAP	150
Cable length-ft	30

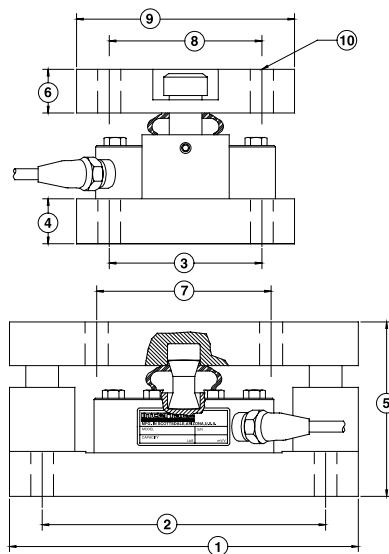
OPTIONS

Zinc Plated (A4200)
Stainless Steel (A4600)
Special Cable Length

ACCESSORIES

9300 SGA
9390 Junction Box
UMC600

Consult factory for more technical information



DIMENSIONS

See Drawing	MODEL			
	A4211 or A4611		A4221, A4621	
	CAPACITY (lbf)			
	2.5K, 5K, 10K		25K, 50K	
	inch	mm	inch	mm
①	8.00	203.2	10.00	254.0
②	6.50	165.1	7.75	196.9
③	3.50	88.9	4.50	114.3
④	1.00	25.4	1.25	31.8
⑤	4.00	101.6	5.00	127.0
⑥	1.00	25.4	1.25	31.8
⑦	4.00	101.6	5.00	127.0
⑧	3.50	88.9	4.50	114.3
⑨	5.00	127.0	6.00	152.4
⑩	0.52	13.2	0.78	19.8