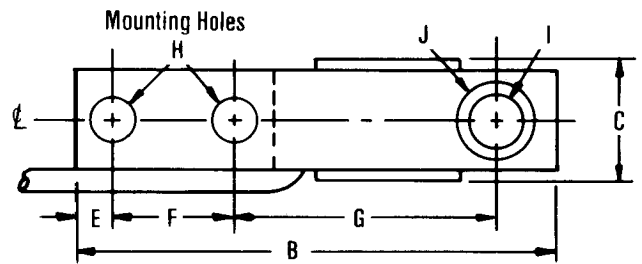
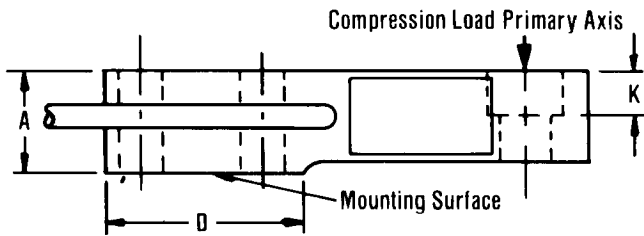


INSTALLATION DIMENSIONS



DIMENSION	A	B	C	D	E	F	G	H	I	J	K	MOUNTING SCREWS			LOAD SCREWS		
												SCREW SIZE	LENGTH (min)	MIN. SCREW GRADE	SCREW TORQUE	SIZE	MIN. ULTIMATE STRENGTH REQUIRED*
SSB-2500 and SSB-5000	in. 1½ mm 38	8 203	1¾ 44	3¾ 95	¾ 19	2.50 63.50	3.88 98.60	17/32 13	11/16 17	1-3/16 30	½ 13	½ 12	2¼	5	60 ft lb 81 N·m	5/8	35,000 PSI 70,000 PSI
SSB-10000	in. 2 mm 51	9¼ 235	1¾ 44	4¾ 117	¾ 19	2.63 66.80	4.88 124.00	17/32 13	11/16 17	1-3/16 30	½ 13	½ 12	2¾	8	120 ft lb 162 N·m	5/8	140,000 PSI

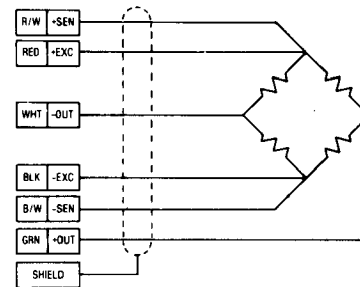
Mounting Instructions: Fasten securely to a flat rigid surface with screws and torques per table.

Mounting surface to be machined, finish 125 or better, flat within .001 T.I.R. *For 300% Ultimate Load Capacity

ELECTRICAL INFORMATION

SSB Series 2500, 5000 and 10,000 lb. capacities provided with a 6-conductor shielded cable (AWG 22) 10 ft. (3m) long.

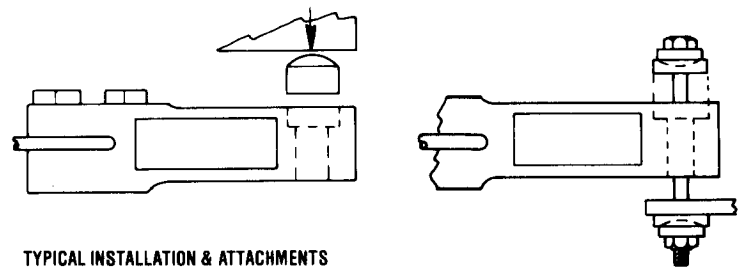
Wiring Color Code complies with ISA S37.8 "Specifications and Tests for Strain Gage Force Transducers" and SMA Load Cell Terminology.



COMPRESSION
UPSCALE

APPLICATION NOTES

1. The Sealed SuperBeam load cell is specifically designed for outdoor use and can be used in scale pits, batching plants or other locations directly exposed to the weather. SSB-2500 is made of Anodized Aluminum. SSB-5000 and 10000 are made of High Strength Steel Alloy and are electroless nickel plated.
2. Please exercise caution while handling and installing these load cells. Application of a force equaling more than 150% of range will result in irreparable damage.



TYPICAL INSTALLATION & ATTACHMENTS

PERFORMANCE DATA

Nominal Output - mV/V	3
Input Resistance-ohms	350+50/-3.5
Output Resistance-ohms	350±3.5
Recommended Excitation-VDC	10
Non-Linearity-% Rated Output	<±0.02
Hysteresis-% Rated Output	<±0.02
Temp. Range Compensated-°F	(-15 to 65°C) 0 to 150
Temperature effect on zero-% Rated Output/100°F	±0.15
Zero Balance-% Rated Output	<±1

WARRANTY & CERTIFICATION STATEMENT ON OTHER SIDE

SEALED SUPERBEAM LOAD CELL

INTERFACE, INC.
7401 E. Butherus Dr.
Scottsdale, Arizona 85260 U.S.A.
Telephone (602) 948-5555 • FAX: (602) 948-1924
TELEX: 825-882