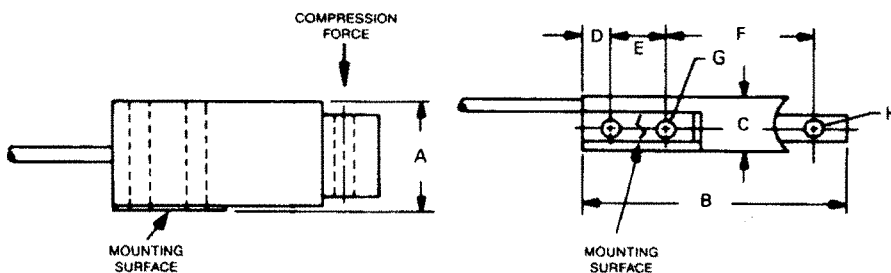


INSTALLATION DIMENSIONS

MODEL,	A	B	C	D	E	F	G	H
MB-5,10, 25, 50 75, 100, 150	1	2 3/4	1/2	1/4	.500	1 1/4	3/4	3/4
	25.4	60.3	12.7	6.4	12.7	33.3	4.4	4.4
	inch	2 3/4	1/2	1/4	.500	1 1/4	3/4	3/4
	mm	25.4	60.3	19.1	6.4	12.7	33.3	4.4

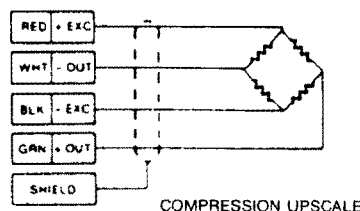


Mounting instructions: Fasten securely to flat rigid surface with two 8-32 X 1 1/4 screws. Torque to 24-inch pounds (2.7N·m) for best performance.

ELECTRICAL INFORMATION

MB Series is provided with a 4-conductor shielded cable (AWG 28) 5 feet (1.5m) long.

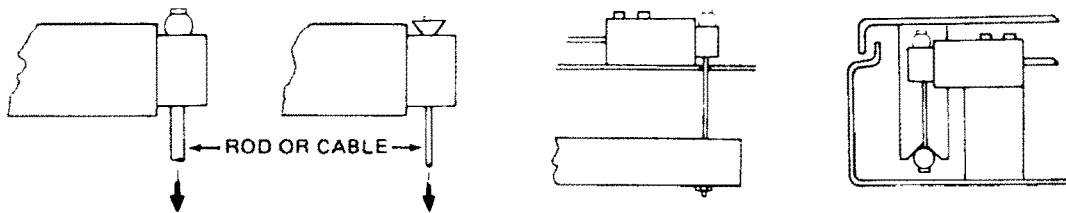
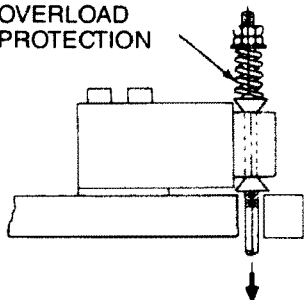
Wiring Color Code complies with ISA S37.8 "Specifications and Tests for Strain Gage Force Transducers" and SMA Load Cell Terminology.



APPLICATION NOTES

1. The Minibeam load cells are designed for controlled environment applications. In general, they can be used anywhere a readout instrument is used.
2. NOTE: Please exercise caution during handling and installation of these load cells. The application of a force equaling more than 150% of the rated capacity (7.5 lbs. on MB-5; 15 lbs. on MB-10; 37.5 lbs. on MB-25, etc.) can result in irreparable damage.
3. These units are not intended for submerged operation. A Moisture Resistant coating is applied for capacities 25 thru 250 lbs. to protect MB Series from high humidity conditions up to and including 95% Relative Humidity and periodic exposure to condensation.

PRELOADED
SPRING
OVERLOAD
PROTECTION



For spring overload details, request IFI #32.

TYPICAL INSTALLATION — ATTACHMENT METHODS

PERFORMANCE DATA

Nominal Output—mV/V	3
Input Resistance—Ohms	350 +50/ -3.5
Output Resistance—Ohms	350 ±3.5
Recommended Excitation	10 VDC
Non-Linearity—% Full Scale	< ±0.03%
Hysteresis—% Full Scale	< ±0.02%
Compensated Temp. Range	0°F to 150°F (-15°C to 65°C)
Temperature effect on zero—% Rated Output/100°F (% Rated Output/55.6°C)	±0.15
Zero Balance—% Rated Output	< ±1

MINIBEAM LOAD CELL

INTERFACE, INC.
7401 E. Butherus Dr.
Scottsdale, Arizona 85260 U.S.A.
Telephone (480) 948-5555 • FAX (480) 948-1924
www.interfaceforce.com

WARRANTY & CERTIFICATION STATEMENT ON OTHER SIDE