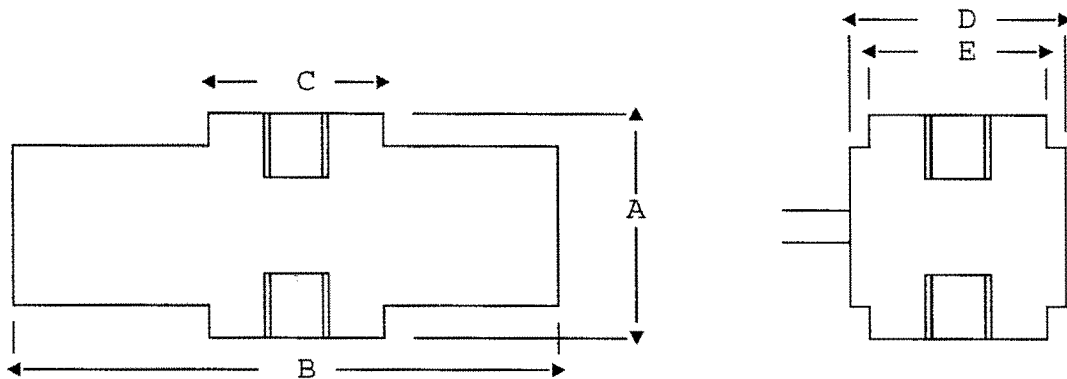


### INSTALLATION DIMENSIONS (inch)

Capacity (lb)	A	B	C	D	E	Thread
5, 10	.73	1.80	.50	.52	.34	10-32 x.20
25, 50, 100	.73	2.00	.50	.64	.47	1/4-28x.23
200, 300	.98	2.12	.57	.90	.72	3/8-24x.37
500, 1000	.98	2.12	.57	.90	.72	3/8-24x.37



### ELECTRICAL CONNECTIONS

The standard SML is supplied with shielded cable, 4-conductor AWG28, 5 ft long. O.D. = .125 inch. The shield is not connected to the load cell body. Tension is positive reading.

Color	Function
Red	+ Excitation
Green	+ Output
White	- Output
Black	- Excitation

### APPLICATION NOTES

- The SML is intended for controlled environment applications. It may be used in humidity up to 95% RH non-condensing. It is not recommended for exposure to spray or submersion.
- Use CAUTION in handling and mounting. Low capacity cells can easily be overloaded and permanently damaged. Torque should be reacted on the load cell structure near the thread being mounted.  
Mounting torque should be limited to:  
SML-5,10,25,50,100 .... Capacity x 0.4 inch  
SML-200,300,500,1000...Capacity x 0.2 inch
- The force to be measured should be applied to the active end of the load cell to avoid interaction of the cable. The active end is opposite of the cover attachment screws. The inactive end is near the attachment screws and is mechanically connected to the cable.

### PERFORMANCE DATA

	Capacity	Nonlinearity	Hysteresis	Zero Balance
Input Resistance (ohm) .....	350	+50/-3.5		
Output Resistance (ohm) .....	350	±3.5		
Recommended Excitation (VDC) ..	10			
	500, 1000	<0.10 %FS	<0.10 %FS	<1.00 %RO
	All others	<0.05 %FS	<0.05 %FS	<1.00 %RO

Interface, Inc. 7401 E. Butherus Dr., Scottsdale, AZ 85260 USA, 480-948-5555