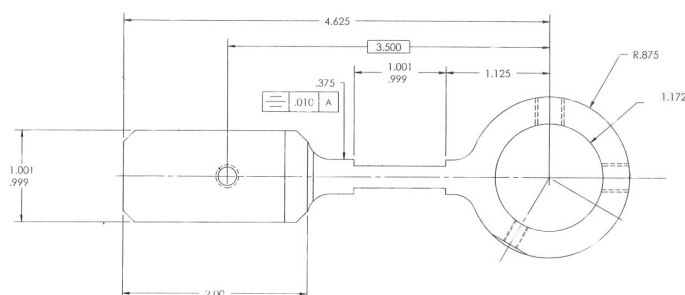
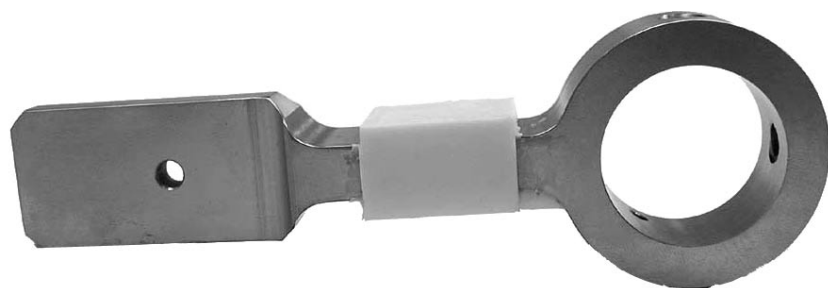


# INTERFACE CUSTOM DESIGNS

## Interface Model RTA—Torque Arm

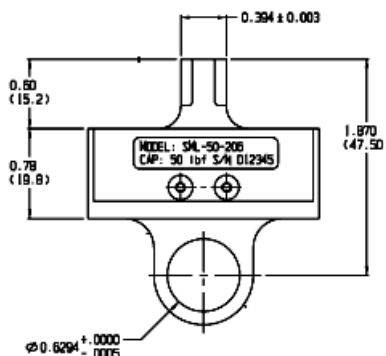


- Test machine application
- Semi-conductor strain gages
- High output of 270 mV
- Used to measure the torque applied on test specimens
- Capacity 60 lb-in

### SPECIFICATIONS

Rated Output	270 mV at 10mA DC Constant Current
Nonlinearity %FS	±0.25
Hysteresis %FS	±0.25
Nonrepeatability %FS	±0.05

## Interface Model SML—Custom



- Industrial automation application
- Custom SML series load cell
- Used for force measurement on robotic positioning and welding assembly
- Modified for ease of installation and connectivity to fixturing
- Small package size
- Capacity 50 lbf

### SPECIFICATIONS

Rated Output	1.9 mV/V
Nonlinearity %FS	±0.10
Hysteresis %FS	±0.10
Nonrepeatability %FS	±0.05